



APEX
HOMES



Artist renderings may include additional feature upgrades.

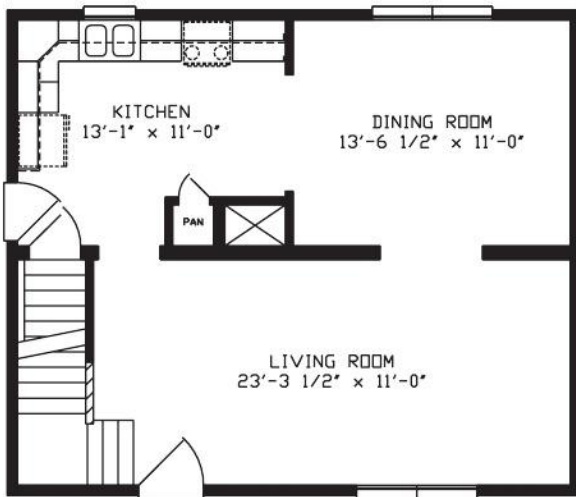
Classic Series

TWO-STORY

7172 Route 522N | Middleburg, Pa 17842
570.837.2333 | 1.800.326.9524 | fax 570.837.2346 | www.apexhomesofpa.com

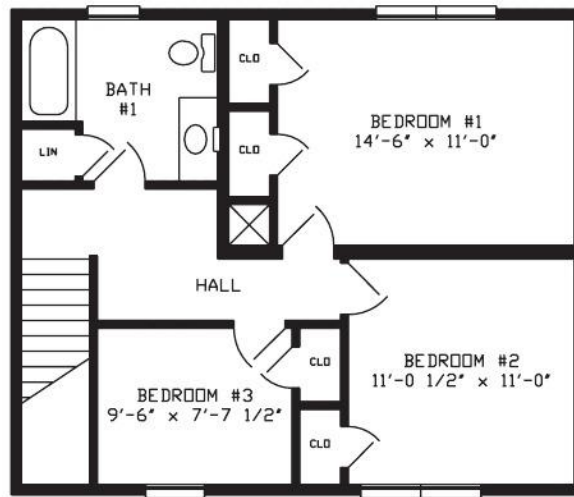
The Two-Story

The elegant two-story home has always been America's favorite home. This design encompasses a wide variety of styles and layouts, from the small, clean traditional to the large, elaborate colonial and contemporary designs. This home offers the owner the ability to add family rooms, breezeways and garages. Interiors and exteriors can be dressed to suit any taste.



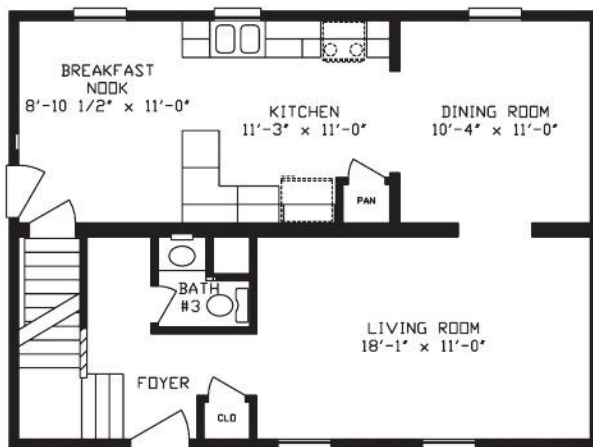
2428 Shearwood

1325 Sq. Ft.
First Floor



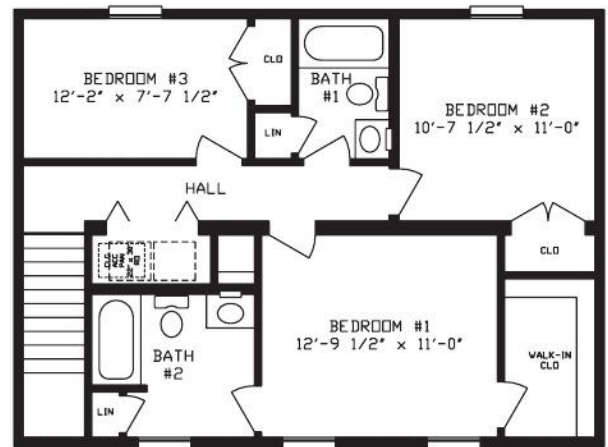
2428 Shearwood

Second Floor



2432 Ashley

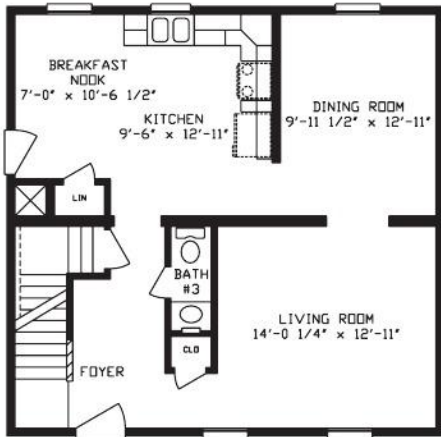
1514 Sq. Ft.
First Floor



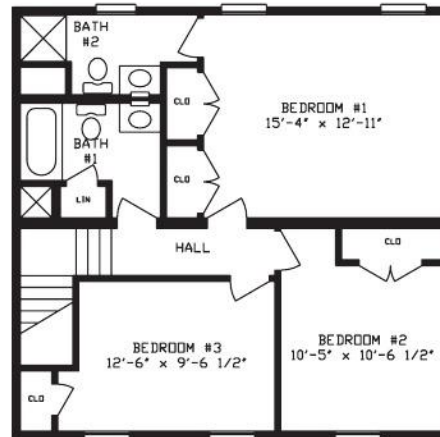
2432 Ashley

Second Floor

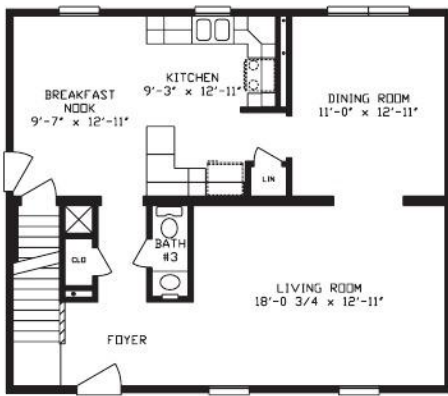




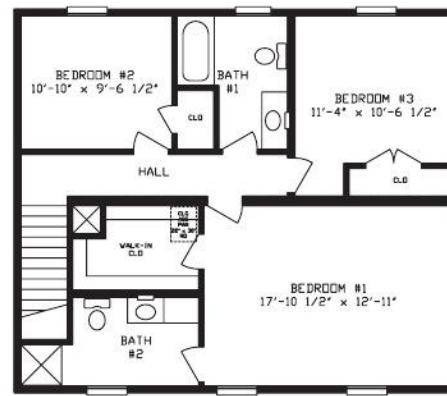
2828 North Hampton
1540 Sq. Ft.
First Floor



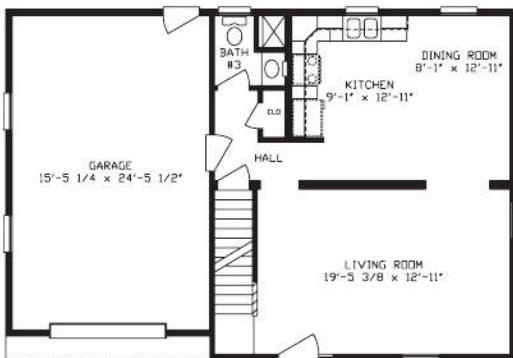
2828 North Hampton
Second Floor



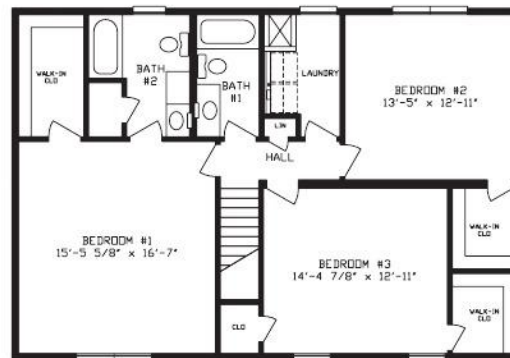
2832 Petersburg
1760 Sq. Ft.
First Floor



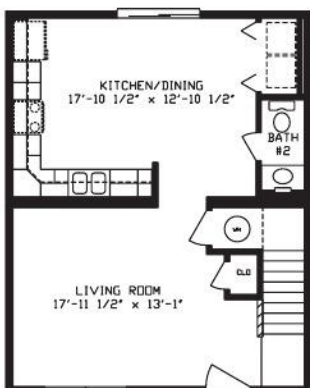
2832 Petersburg
Second Floor



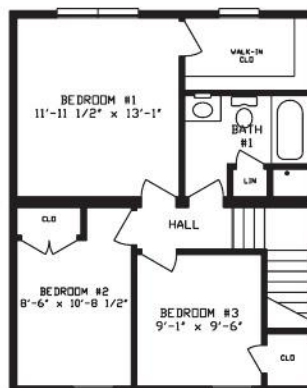
2840 Hartford
2200 Sq. Ft.
First Floor



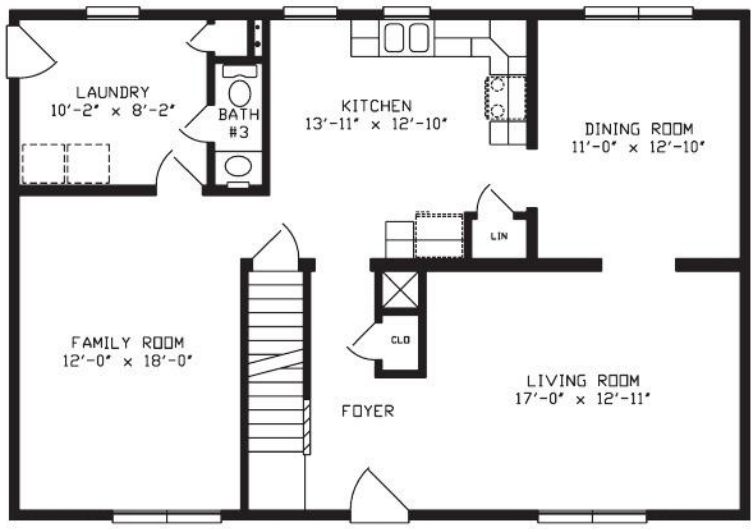
2840 Hartford
Second Floor



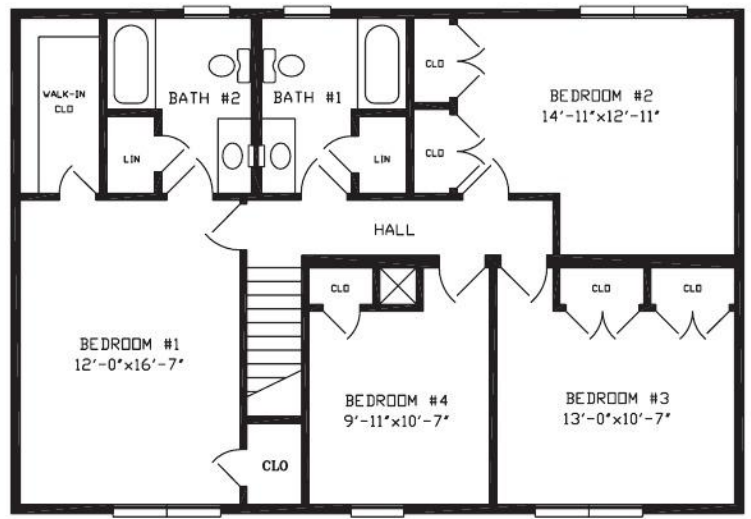
2822 Durham
1210 Sq. Ft.
First Floor



2822 Durham
Second Floor

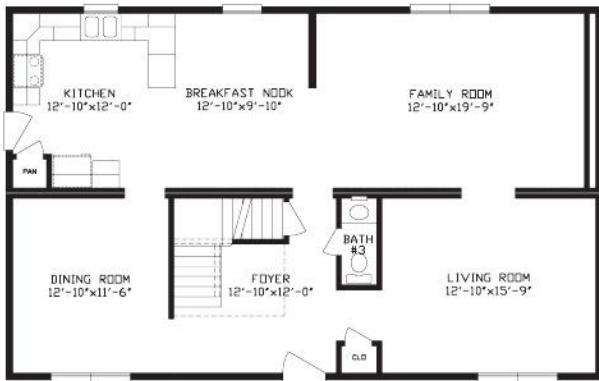


2840 Dutchess
2200 Sq. Ft.
First floor

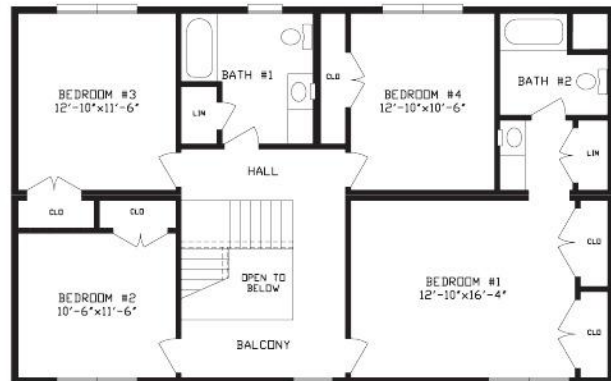


2840 Dutchess
Second Floor

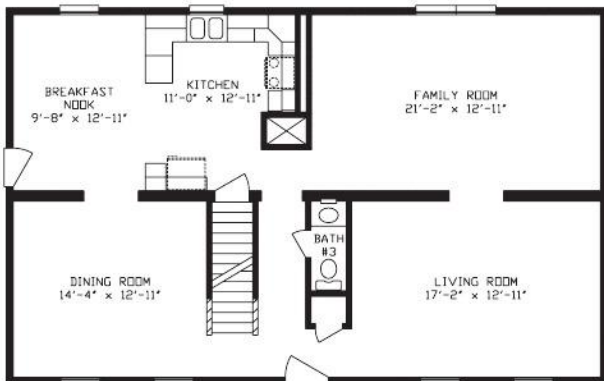




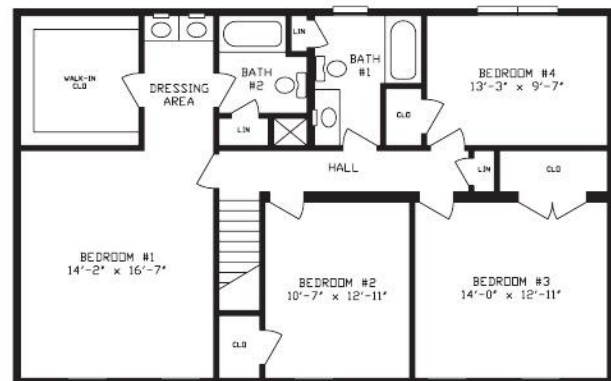
2844 Syracuse
2420 Sq. Ft. First floor



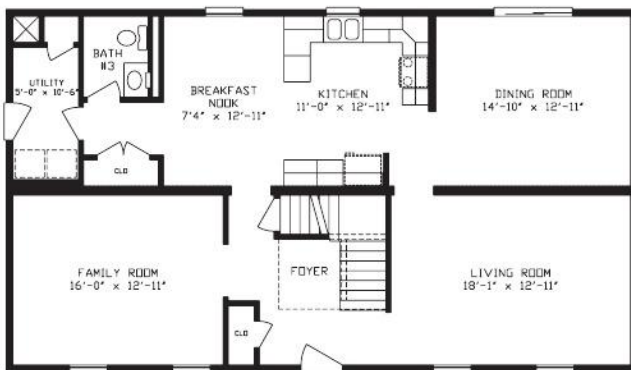
2844 Syracuse
Second Floor



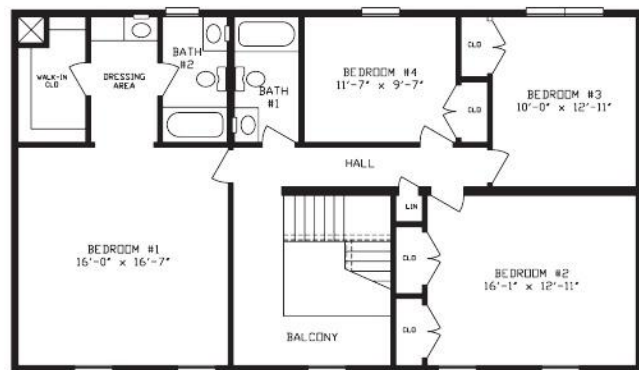
2844 Flemington
2420 Sq. Ft. First floor



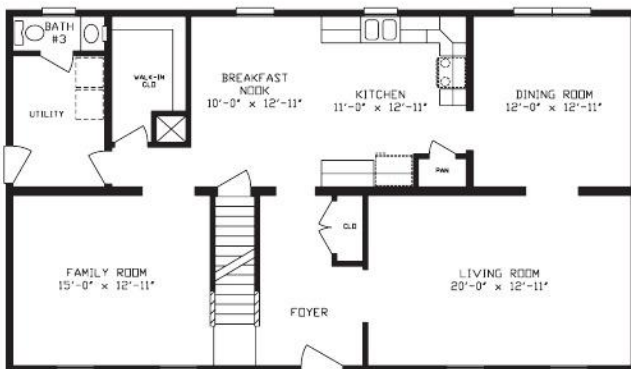
2844 Flemington
Second Floor



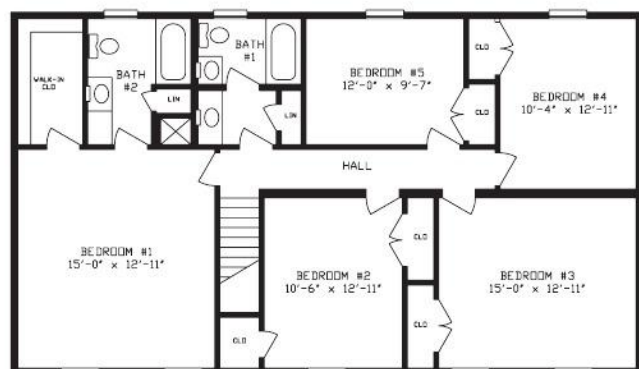
2848 Montgomery
2640 Sq. Ft. First floor



2848 Montgomery
Second Floor

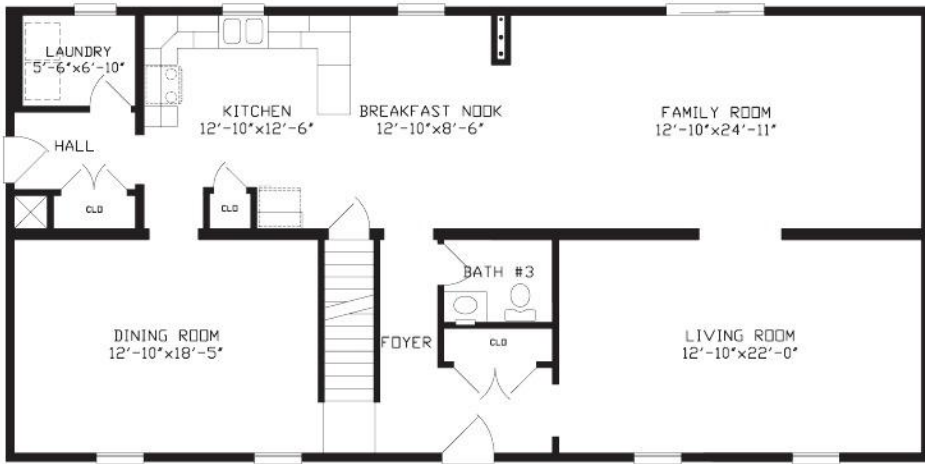


2848 Arlington
2640 Sq. Ft. First floor

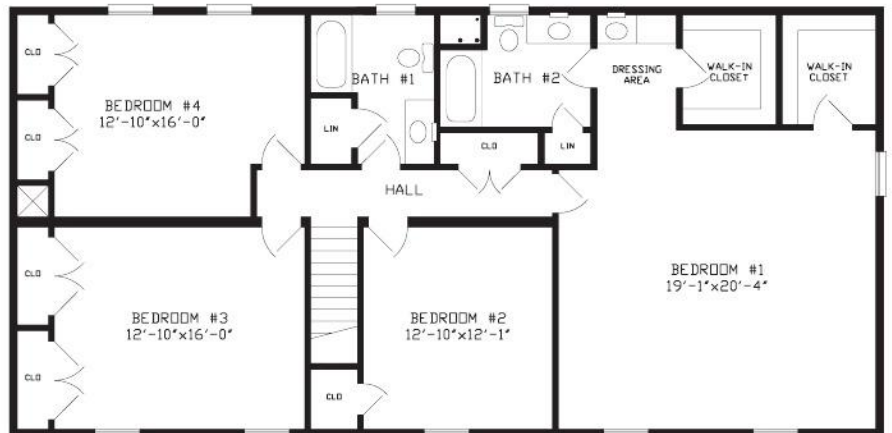


2848 Arlington
Second Floor





2856 Glen Manor
3080 Sq. Ft.
First floor

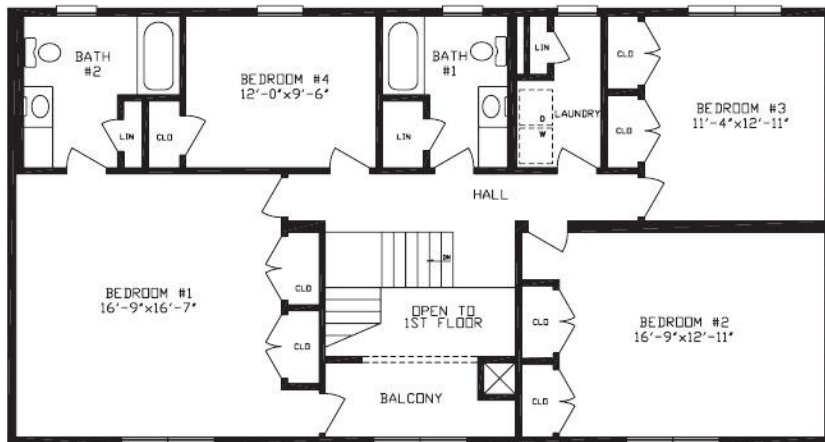
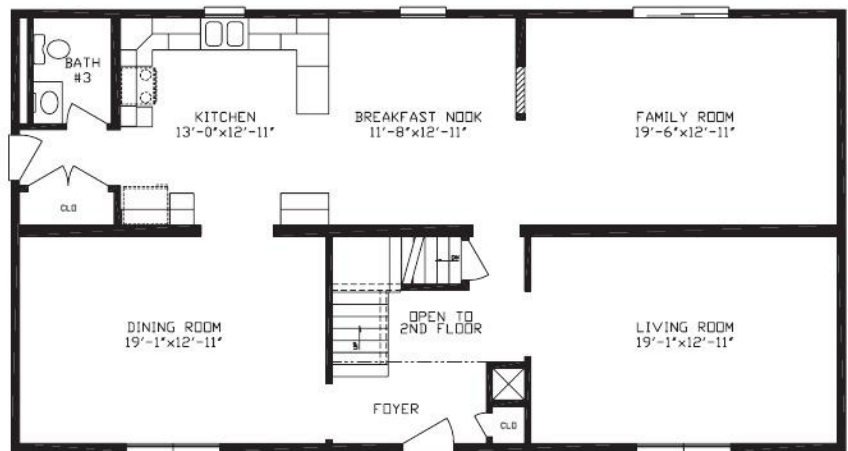


2856 Glen Manor
Second Floor





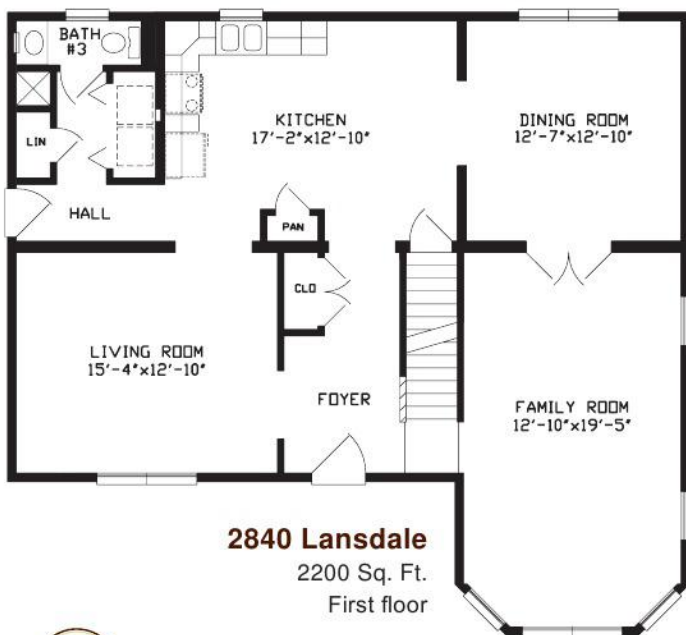
2852 Lexington
2860 Sq. Ft.
First floor

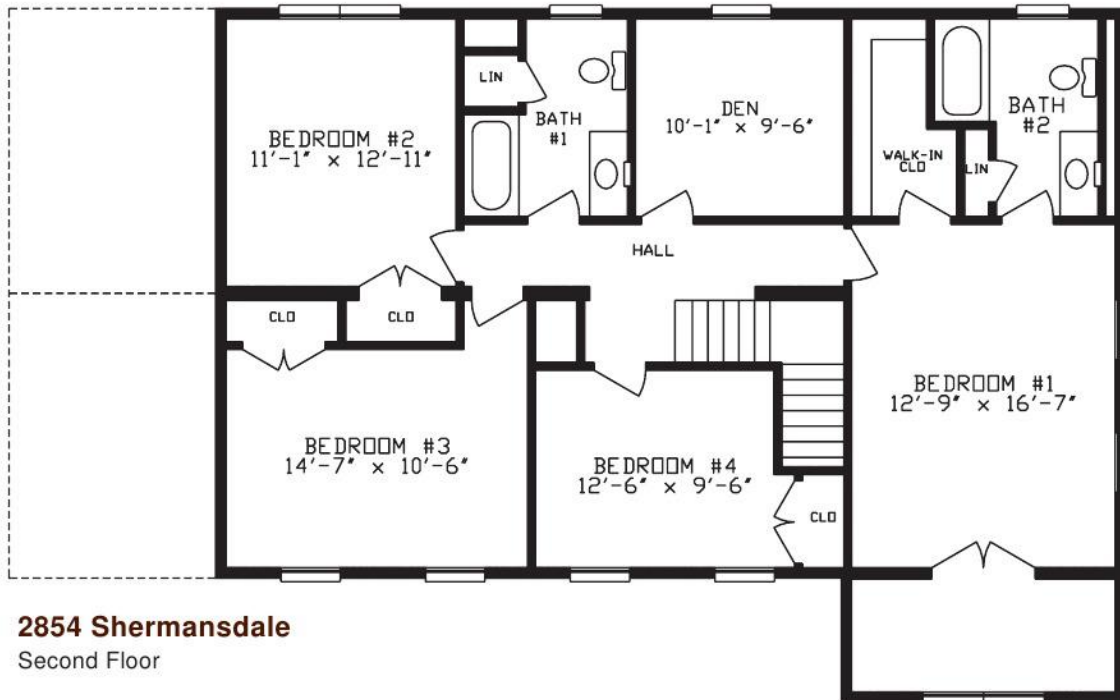
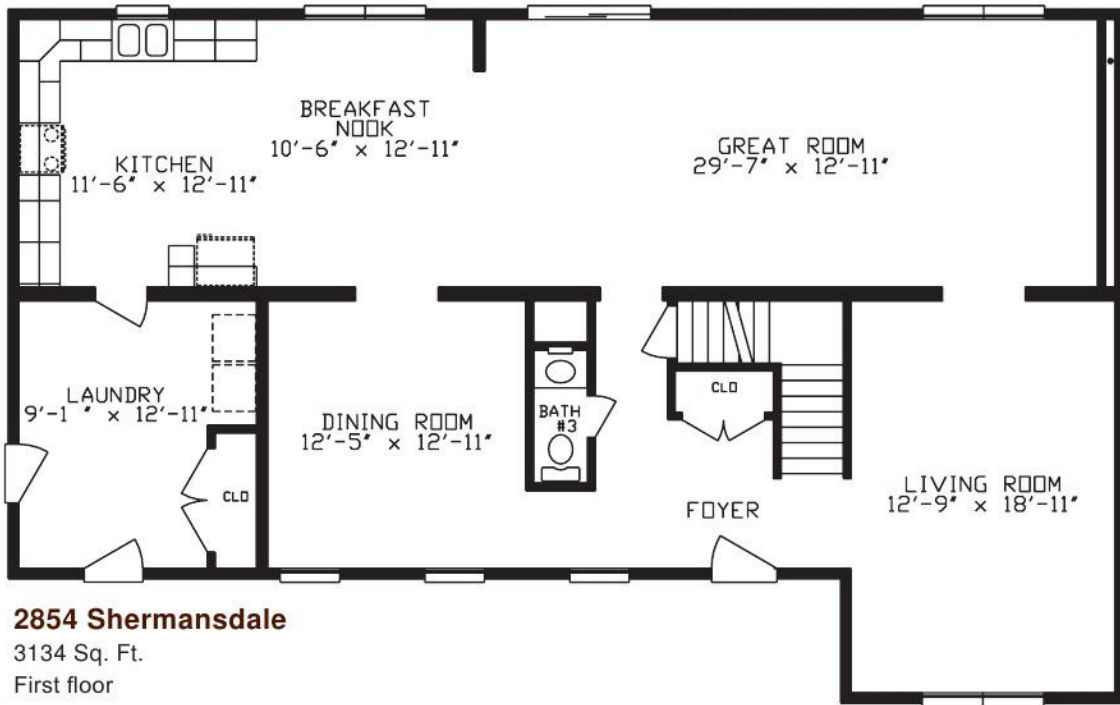


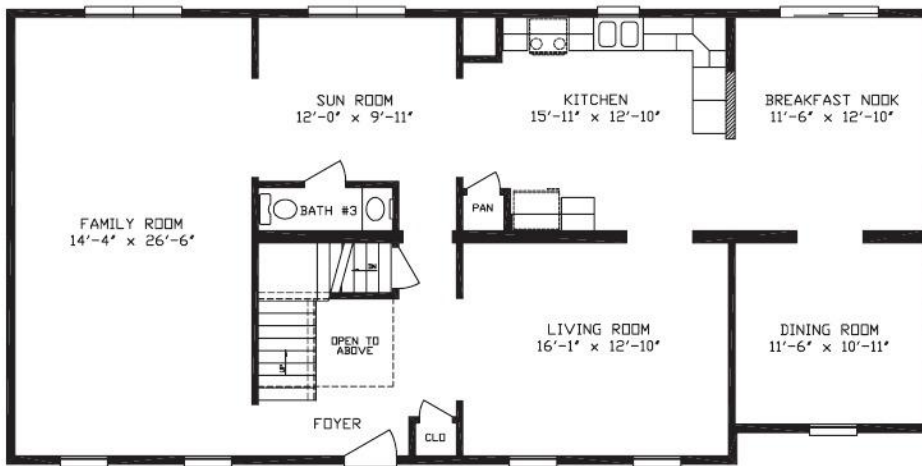
2852 Lexington
Second Floor



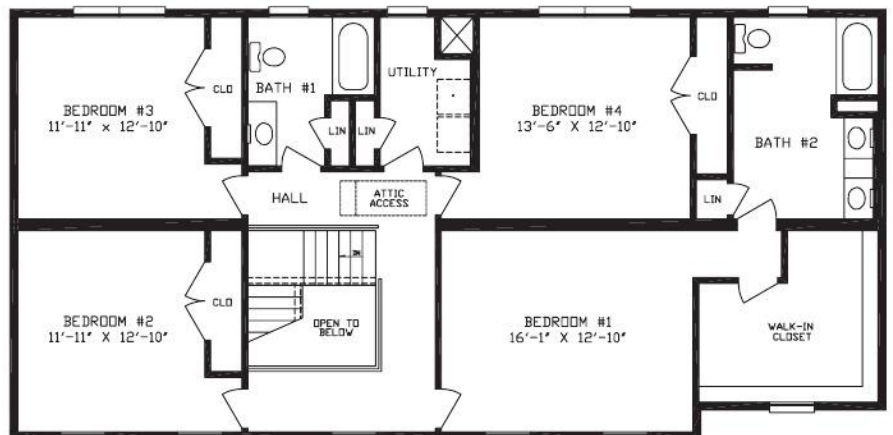
This home gives the look and feel of country charm. While the exterior comes from yesteryear, the floor plan is designed to serve today's active family. Imagine the activities that can be enjoyed in the huge great room.



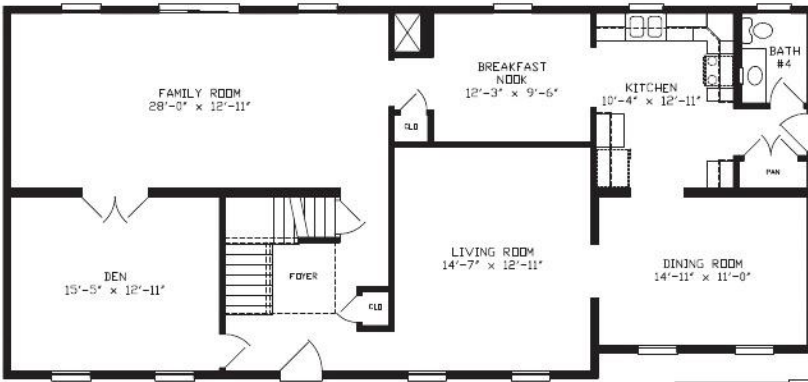




2856 Wilmington
3080 Sq. Ft.
First floor



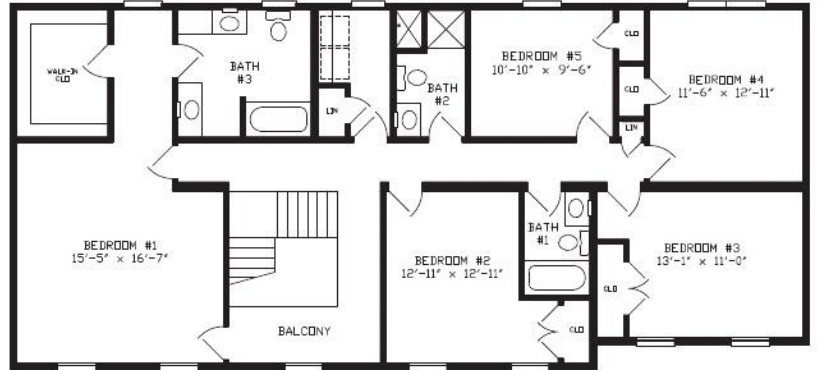
2856 Wilmington
Second Floor



2860 Rosedale

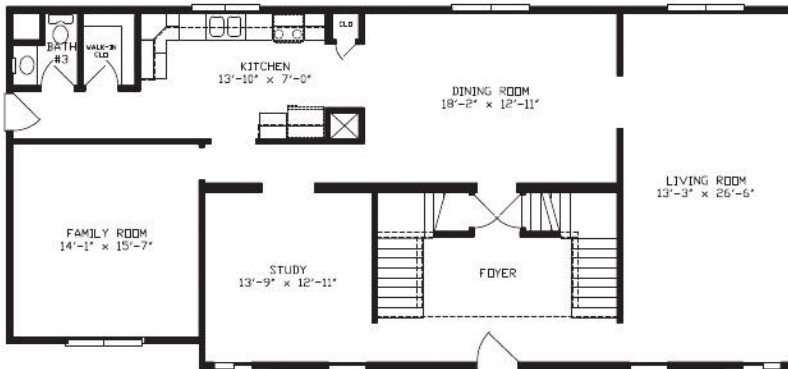
3300 Sq. Ft.

First floor



2860 Rosedale

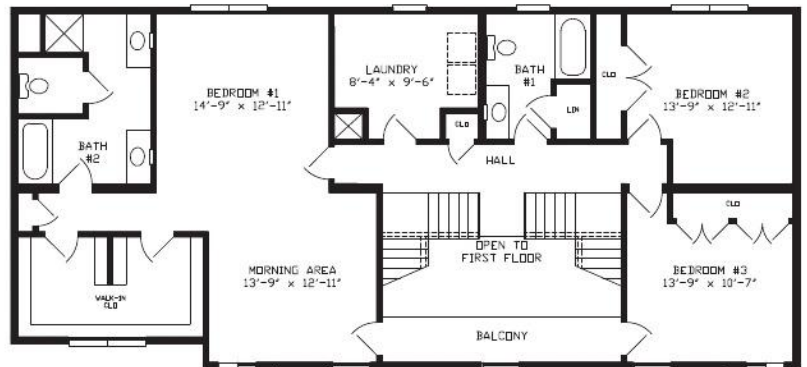
Second floor



2860 Charlottesville

3300 Sq. Ft.

First floor



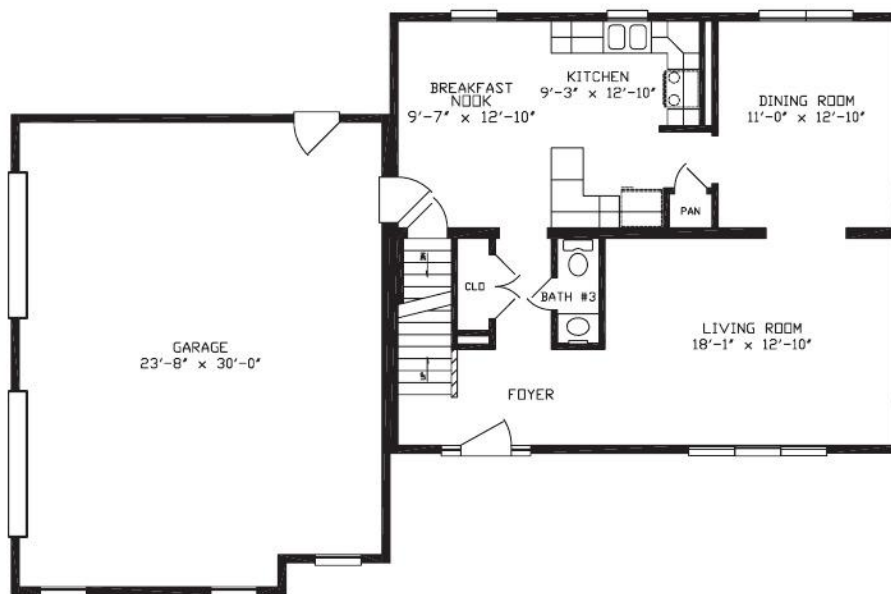
2860 Charlottesville

Second floor





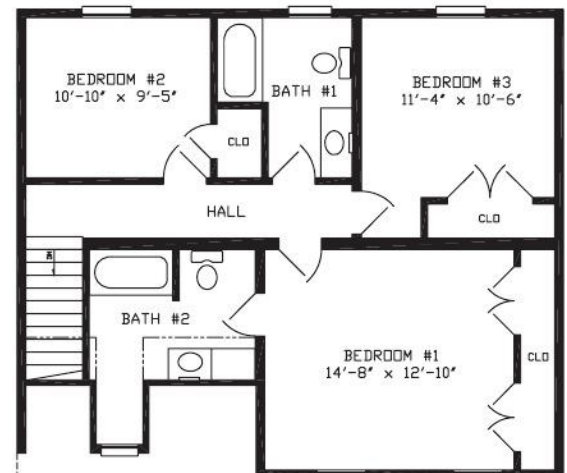
This lovely two-story design has interesting lines and a charming front porch. The three bedrooms and two and one-half baths make an exciting and comfortable home for today's family.



2832 Rocky Mount

1792 Sq. Ft.

First floor



2832 Rocky Mount

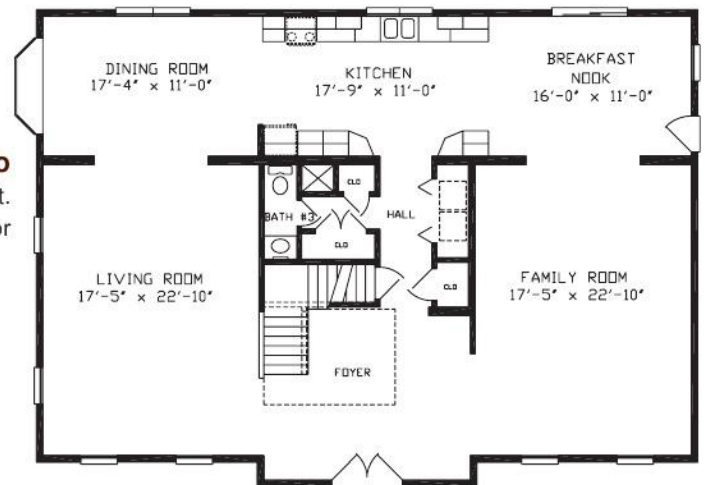
Second Floor





This luxurious two-story has bold exterior detailing. The distinctive arched windows add an old world charm. The active family will lead a glorious existence in this home.

3652 Monticello
3744 Sq. Ft.
First floor

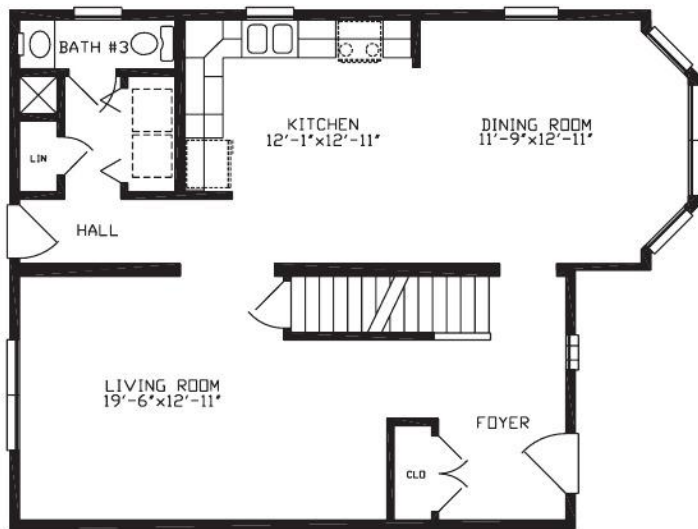


3652 Monticello
Second Floor

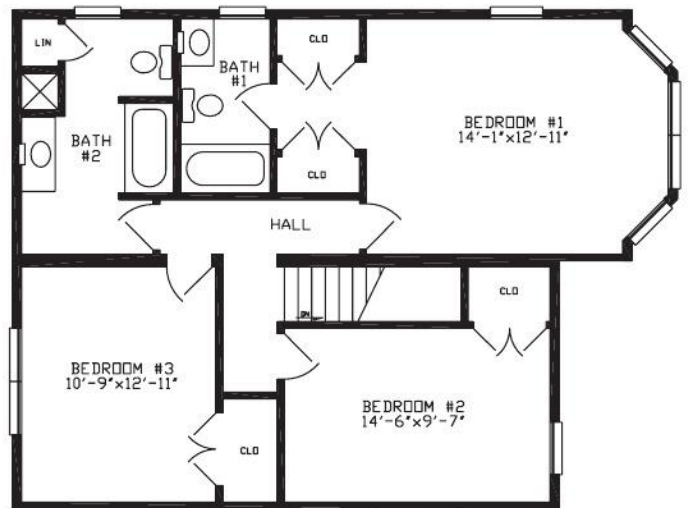




This home combines the best from the past and the present. Its Victorian trim and bay window extension accent the unique and interesting lines of this home.



Caroline
1904 Sq. Ft.
First floor



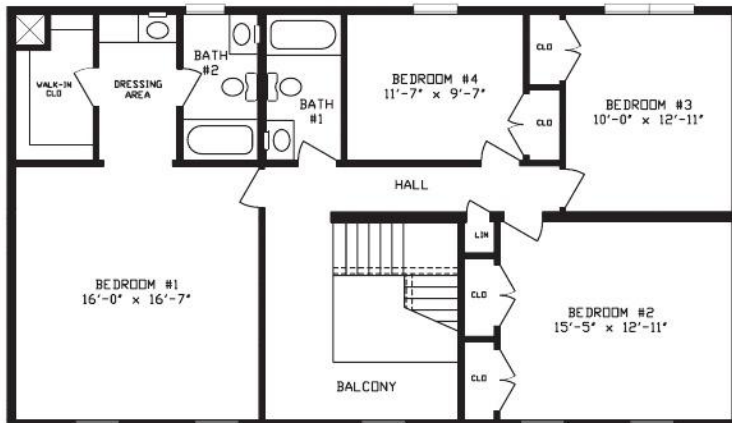
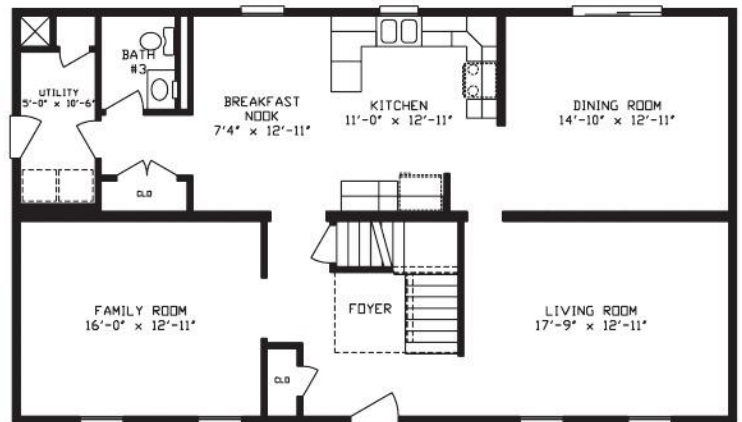
Caroline
Second Floor





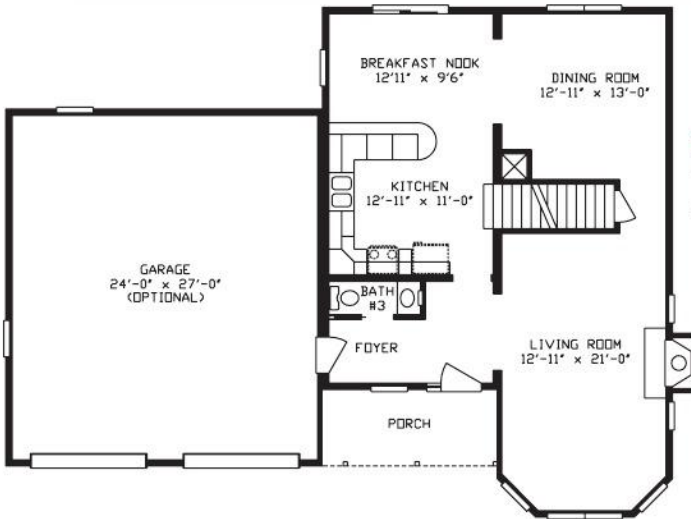
This spacious and luxurious two-story home could easily be imagined on a beautiful Southern estate. The rich detailing accents give you a feeling of an old country manor.

2848 Virginian
2640 Sq. Ft.
First floor

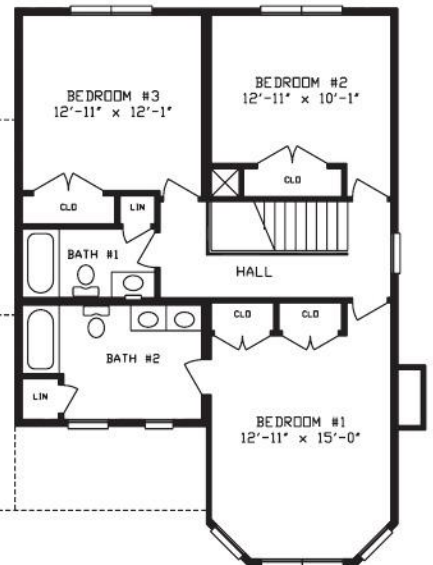


2848 Virginian
Second Floor





2830/40 Atlantic
1925 Sq. Ft.
First floor



2830/40 Atlantic
Second Floor

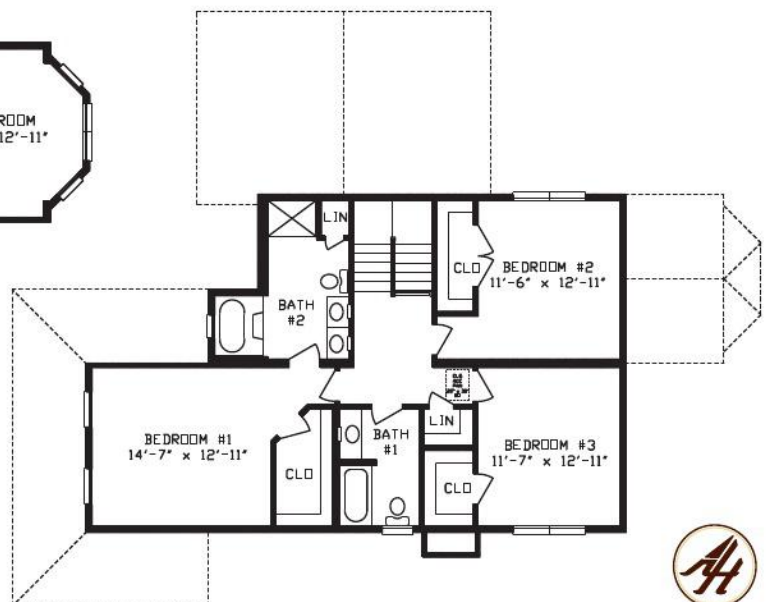


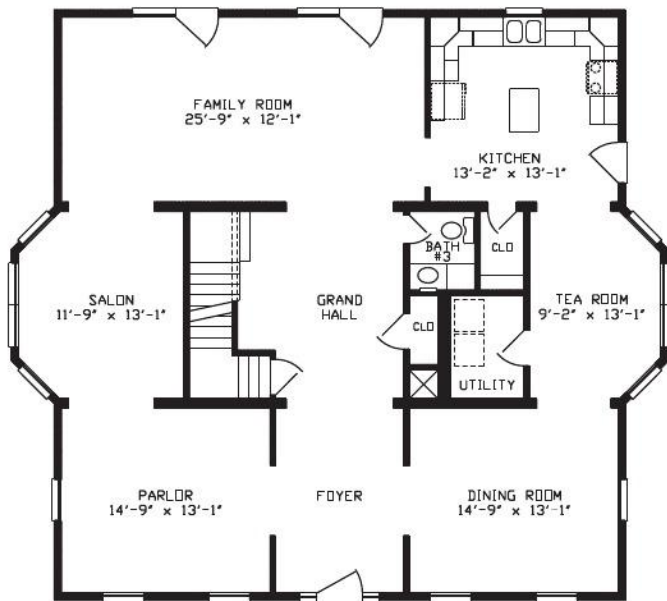


Willow
2593 Sq. Ft.
First floor

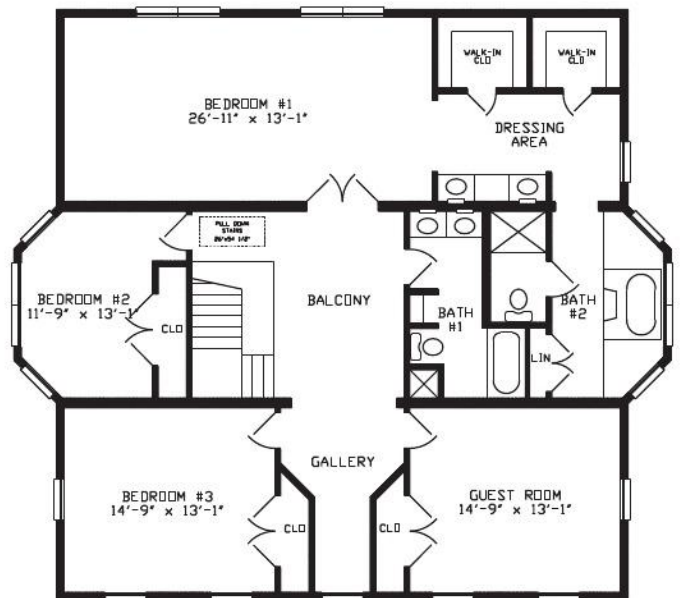


Willow
Second Floor



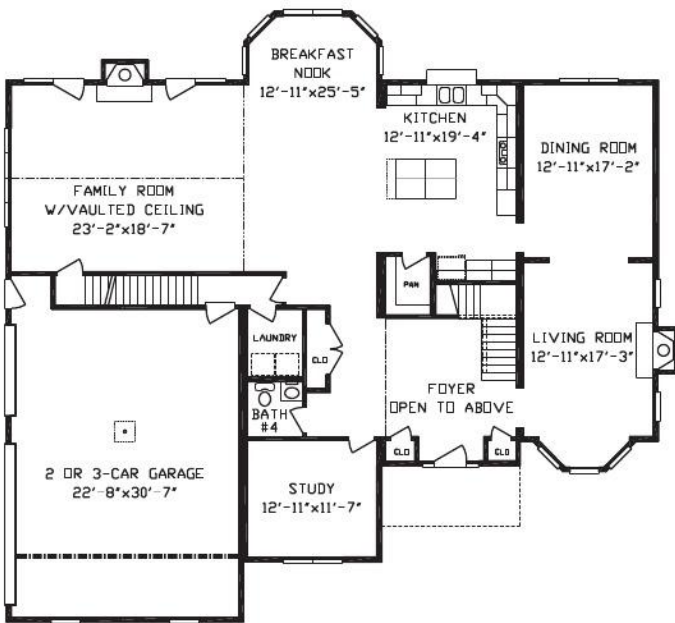


4146 Biltmore I
3772 Sq. Ft.
First floor

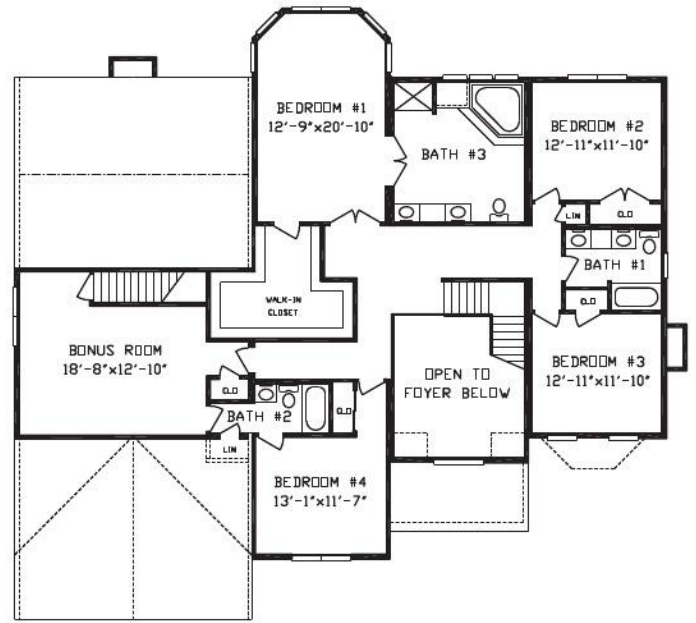


4146 Biltmore I
Second Floor



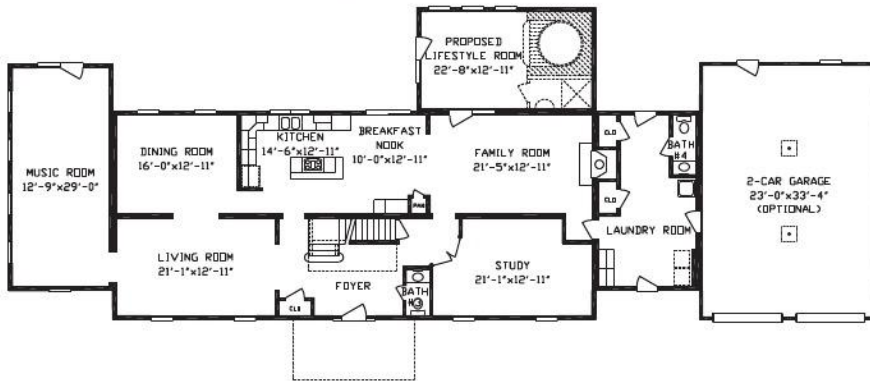


Sussex
4419 Sq. Ft.
First floor



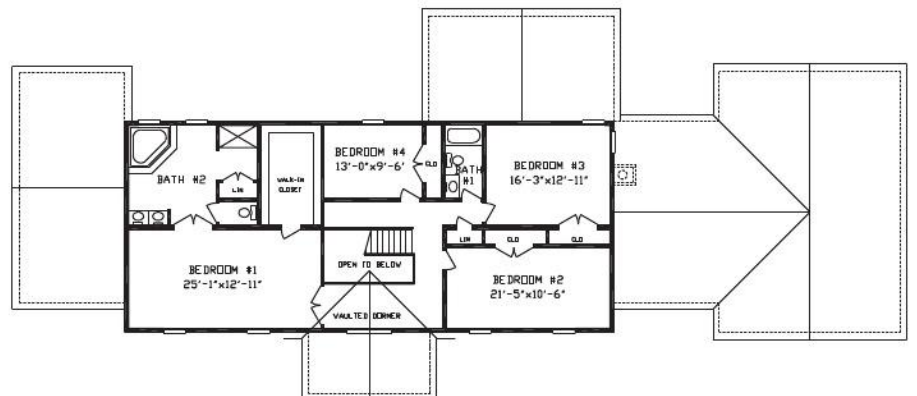
Sussex
Second Floor





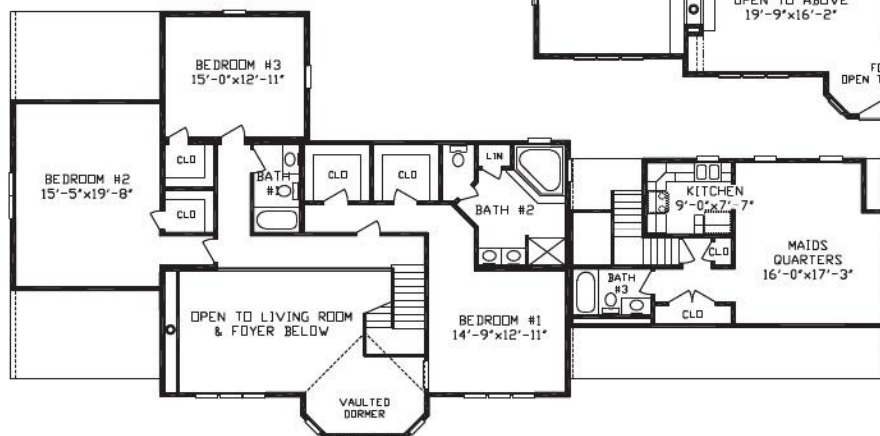
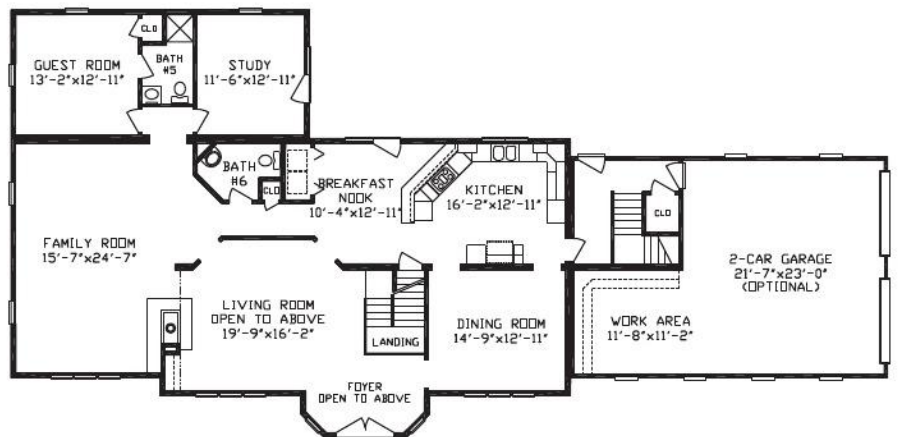
Raleigh
4587 Sq. Ft.
First floor

Raleigh
Second Floor





New Brunswick
4684 Sq. Ft.
First floor

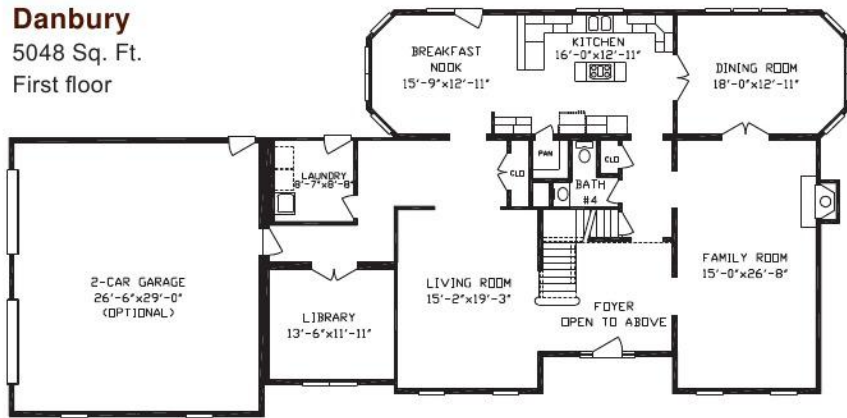


New Brunswick
Second Floor

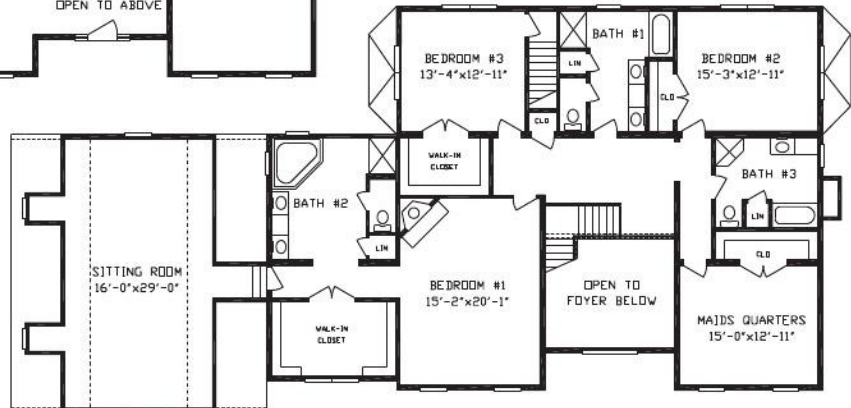




Danbury
5048 Sq. Ft.
First floor

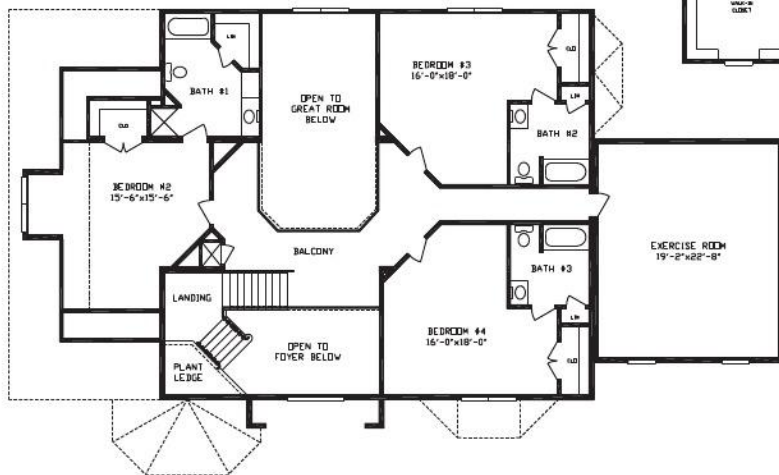
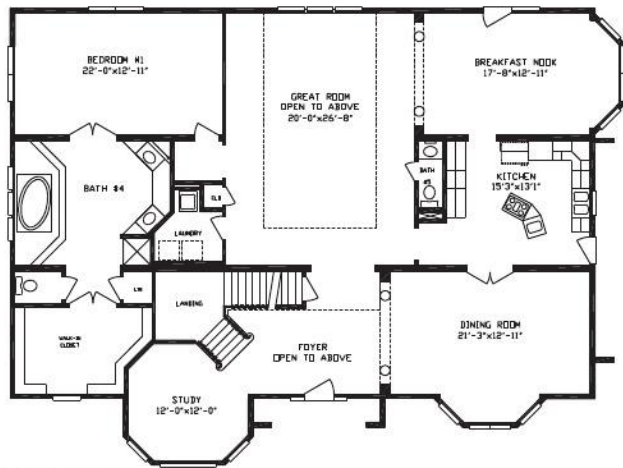


Danbury
Second Floor

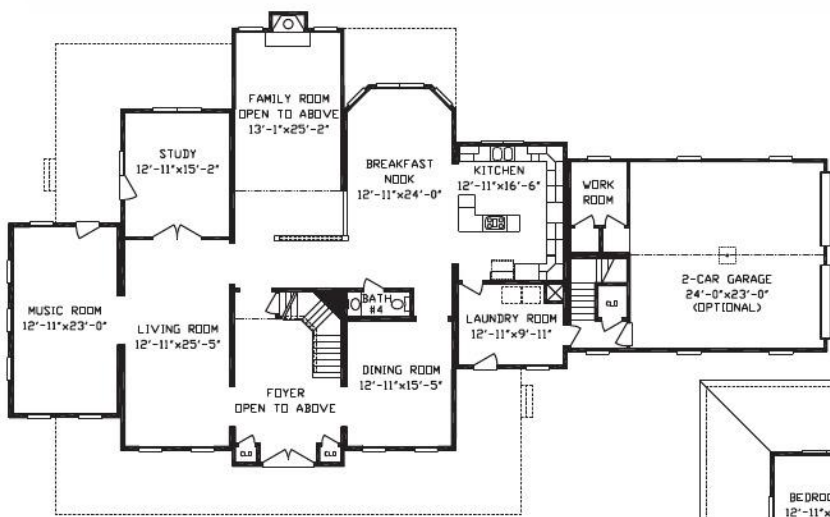




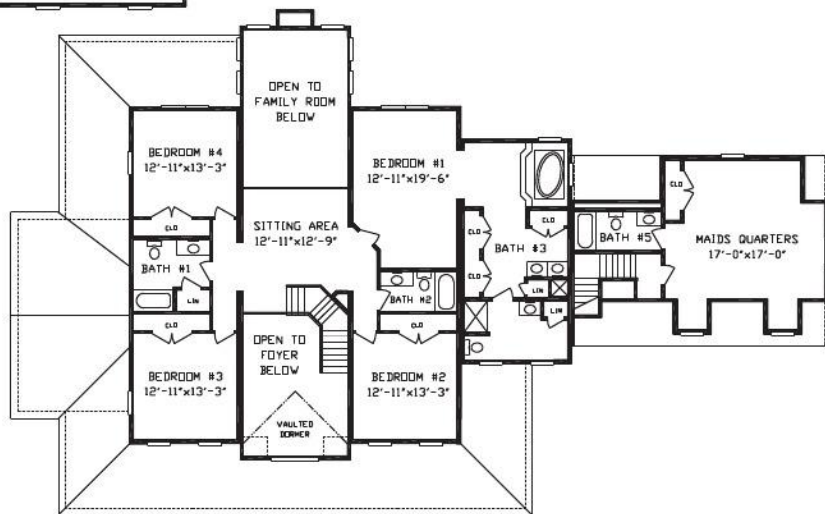
Chateau Manor
5418 Sq. Ft.
First floor



Chateau Manor
Second Floor



Meadow Brook
5487 Sq. Ft.
First floor

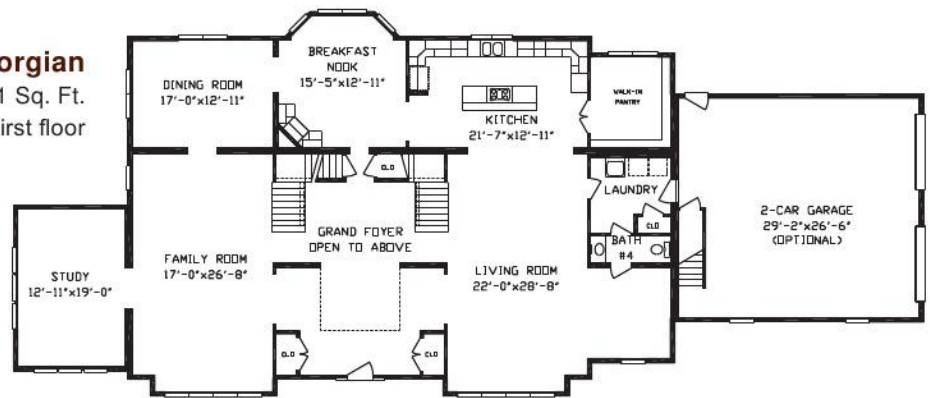


Meadow Brook
Second Floor

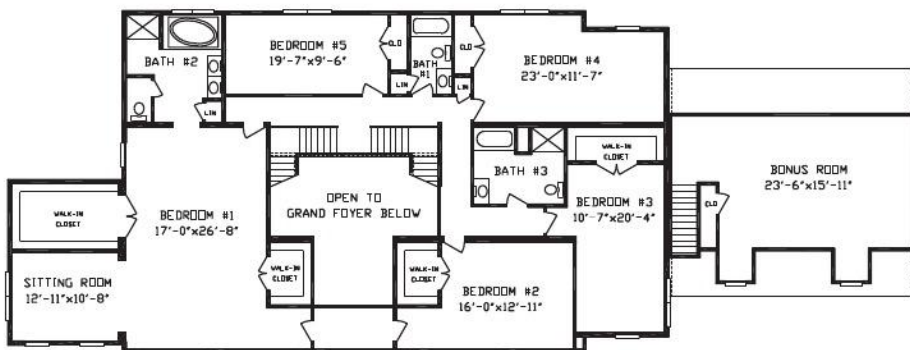




Georgian
6021 Sq. Ft.
First floor



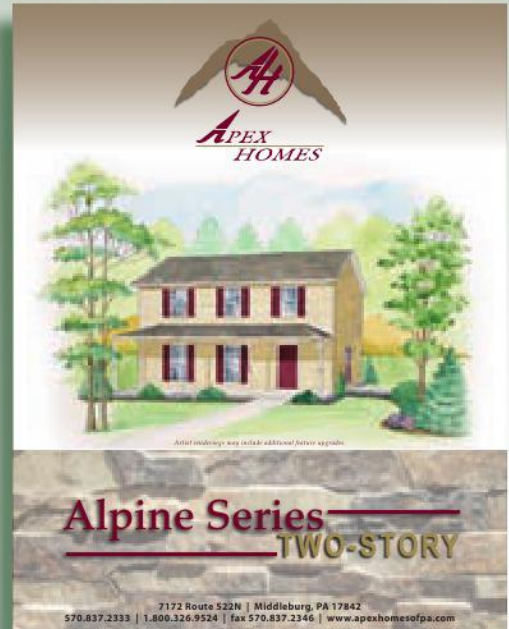
Georgian
Second Floor



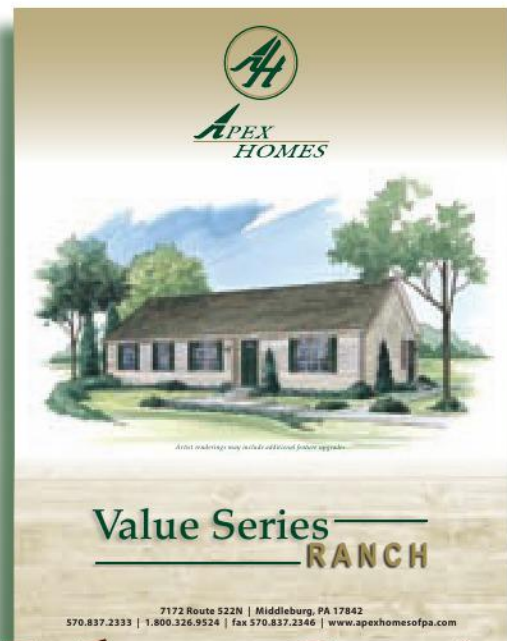
For additional home selections, take a look at our other Series.



Designer Series



Alpine Series



Value Series

Apex Homes can customize any plan to your exact requirements.

Contact us today for more information!



3,189 Sq. Ft. with garage



JUNIPER



2,806 Sq. Ft. without garage
3,375 Sq. Ft. with garage



WICKSBURG



APEX

HOMES

www.apexhomesofpa.com

7172 Route 522N | Middleburg, Pa 17842
570.837.2333 | 1.800.326.9524 | fax 570.837.2346