



APEX
HOMES



Artist renderings may include additional feature upgrades.

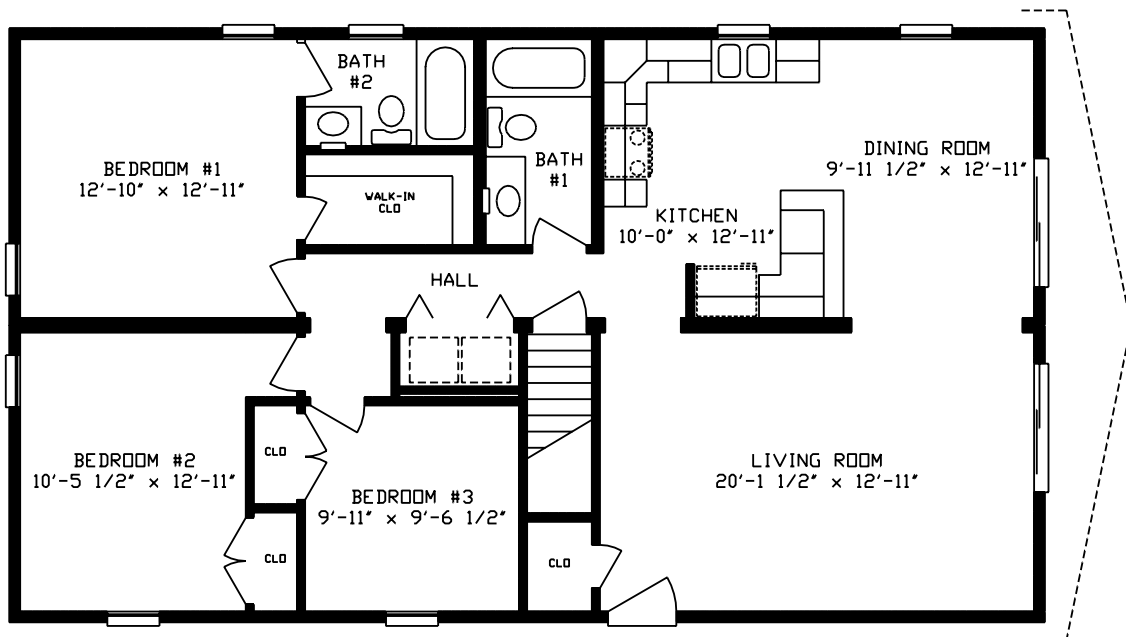
Chalet SERIES

7172 Route 522N | Middleburg, Pa 17842
570.837.2333 | 1.800.326.9524 | fax 570.837.2346 | www.apexhomesofpa.com

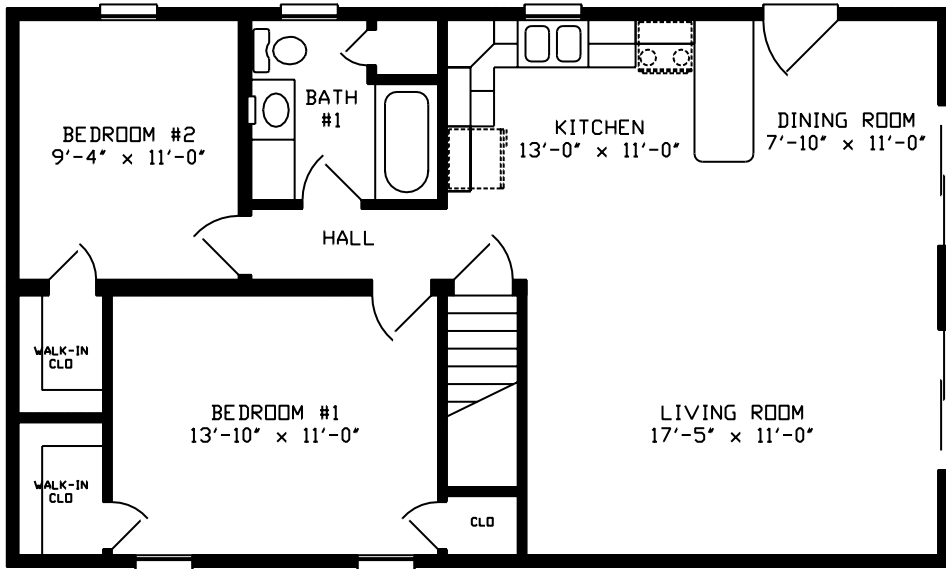


The Ranch Chalet

What a delightful living experience will be in store for the owners of this great home. Designed for a sloping site, this elevation has both upper and lower levels completely exposed for the fullest enjoyment of indoor and outdoor living patterns.

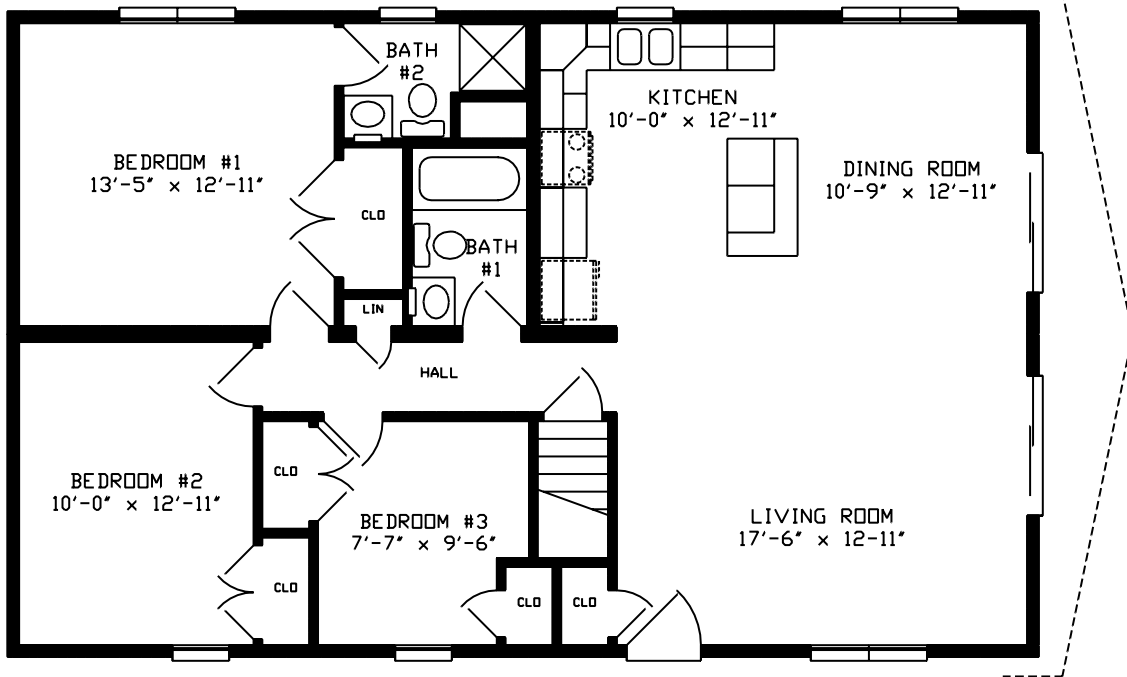


2848 Ocean View
1320 Sq. Ft.



2440 Deercroft

946 Sq. Ft.



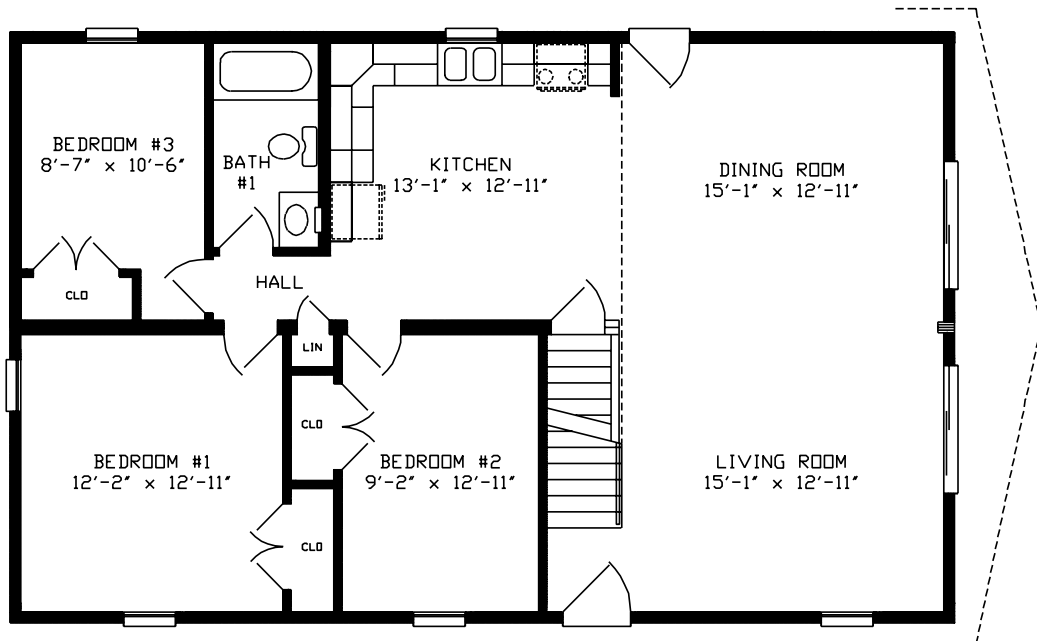
2844 Timberlake

1232 Sq. Ft.



The Cape Chalet

An exciting display of various rooflines and vertical siding pierced by windows and glass panels create visual interest on the exterior of this handsome contemporary home.



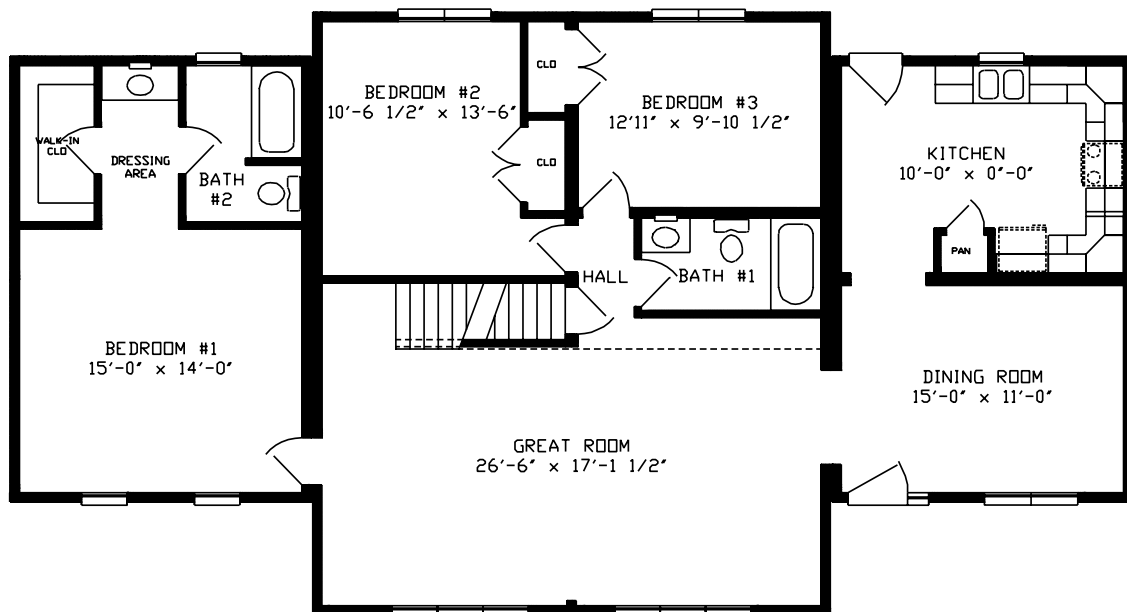
2844 Clifton
1210 Sq. Ft.





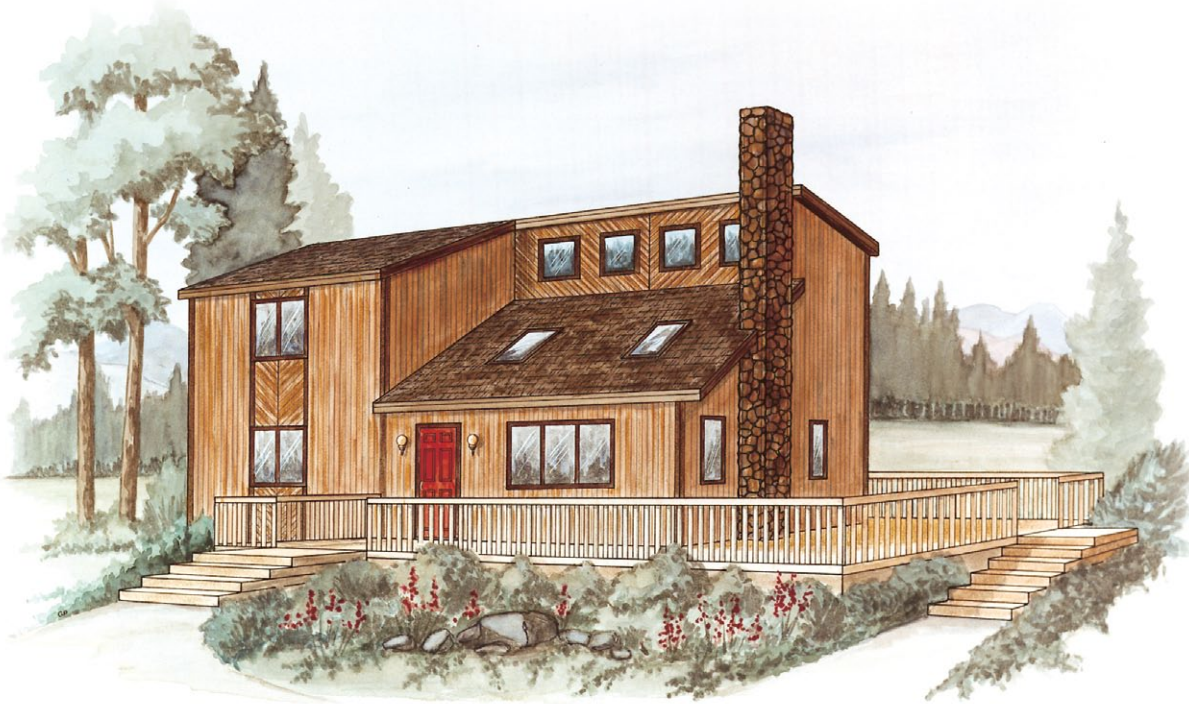
The Chalet

This picturesque exterior is dominated by a projecting roof acting as a dramatic sun visor for the wonderfully large glass area below. A spectacular home for a wonderful living experience.



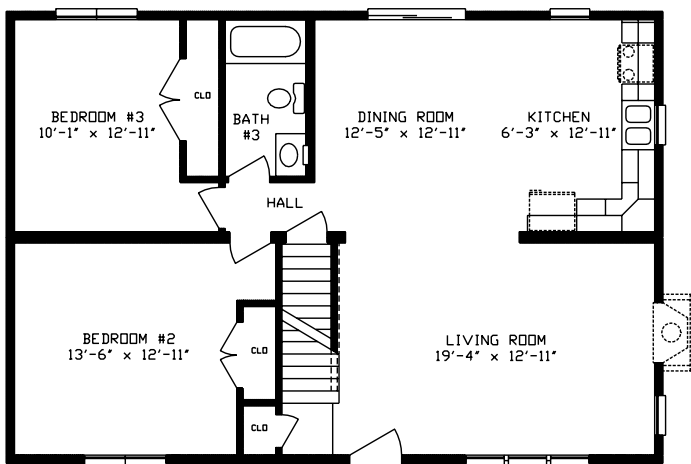
1624/2832/1624 Mount Airy
1636 Sq. Ft.



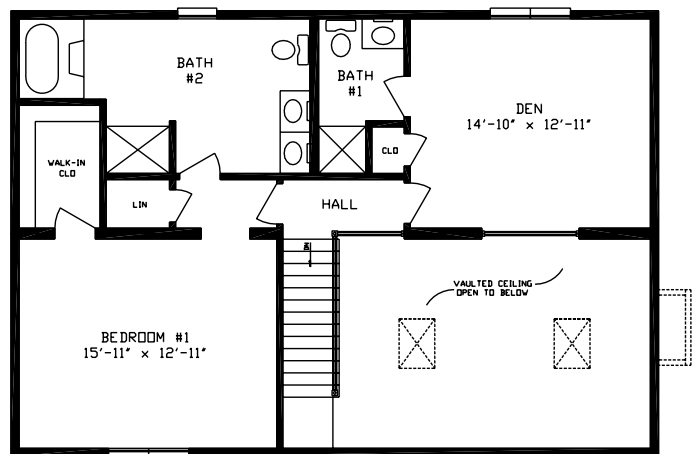


The Two-Story

A wonderfully organized plan with an exterior that will surely command the attention of each passerby. With interesting roof lines and window treatments, this is truly a unique looking contemporary home.



2840 Ashberry
1870 Sq. Ft.
First floor

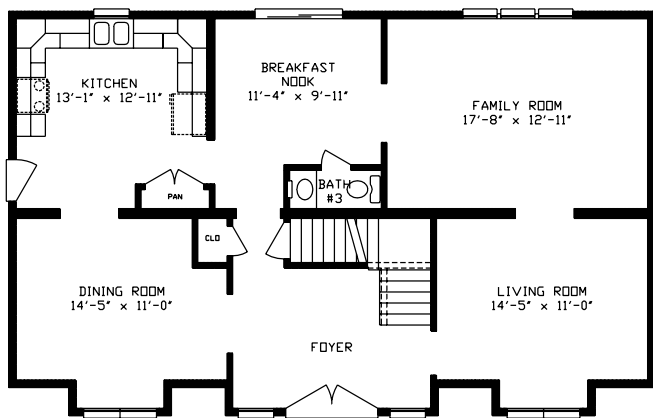


2840 Ashberry
Second Floor

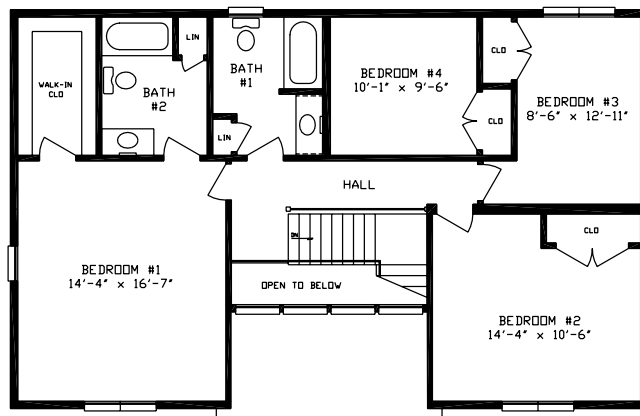


The Two-Story

Here is a practical and attractive contemporary two-story home. With its variety of angles and interesting shapes, you get a two-story home with a contemporary flair.



2644/2844 Laurelton
2376 Sq. Ft.
First floor



2644/2844 Laurelton
Second Floor



APEX

HOMES

www.apexhomesofpa.com

7172 Route 522N | Middleburg, Pa 17842
570.837.2333 | 1.800.326.9524 | fax 570.837.2346