


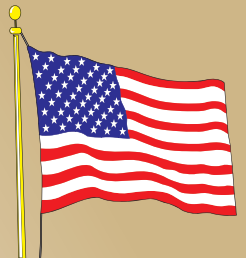


Building
AMERICA'S
Future... Today!



PROFESSIONAL
BUILDING
SYSTEMS, INC.

Vacation Homes

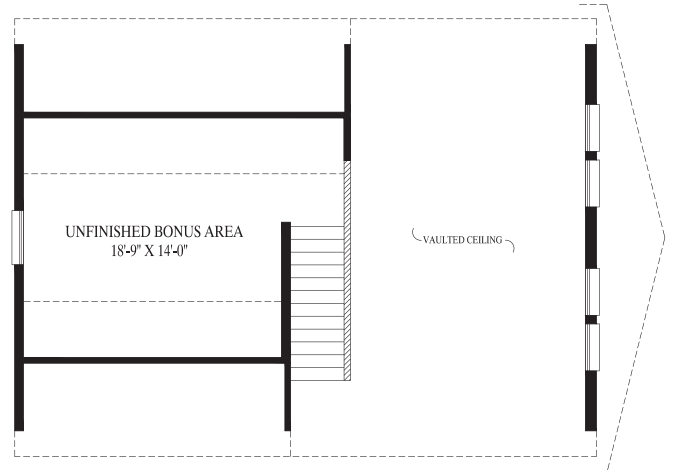
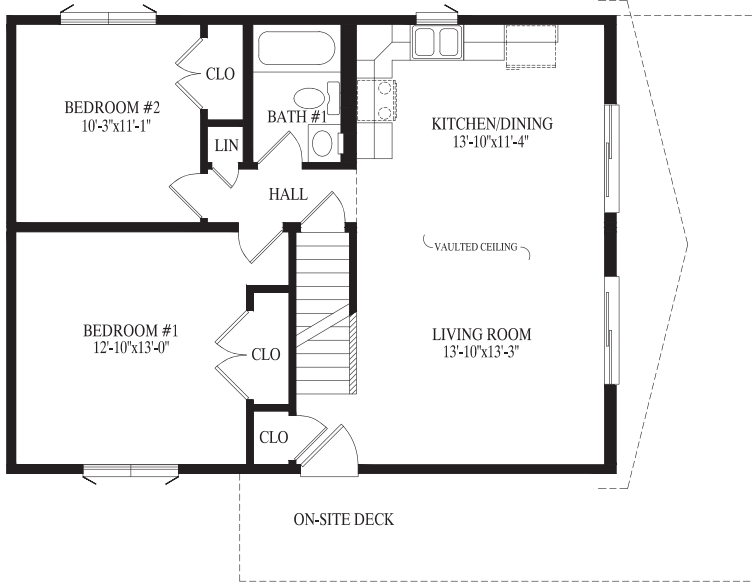


Made in USA

SOMERSET I

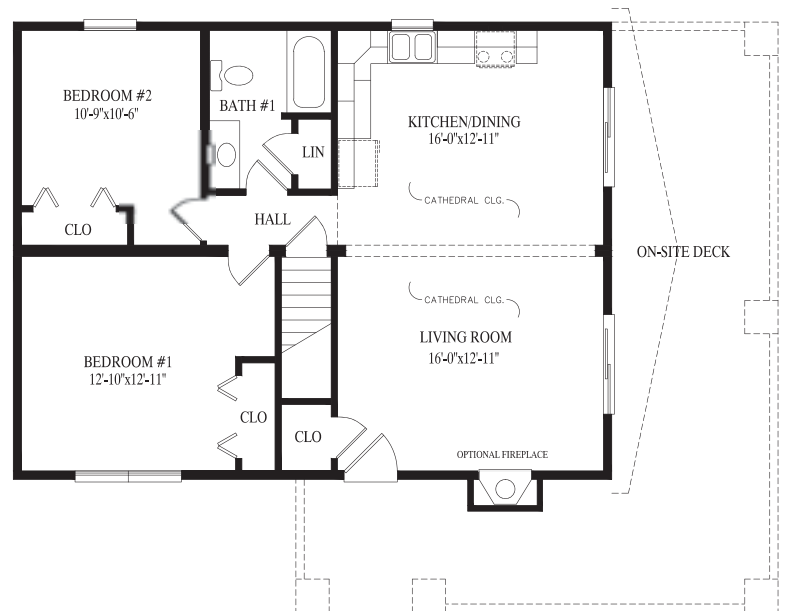
Somerset I

25' 7" x 34'
 870 sq. ft. first floor
 287 sq. ft. unfinished
 second floor



Aspen
 27' 6" x 36'
 993 sq. ft.

ASPEN

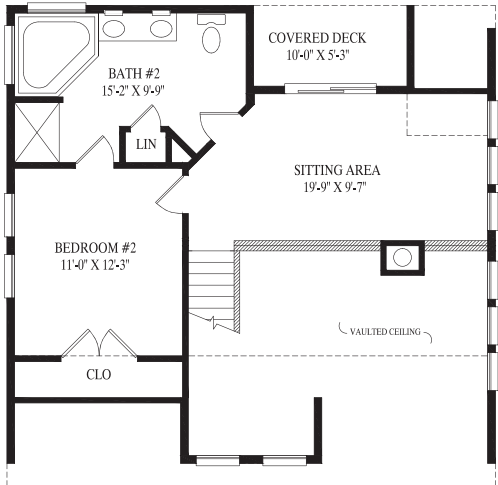
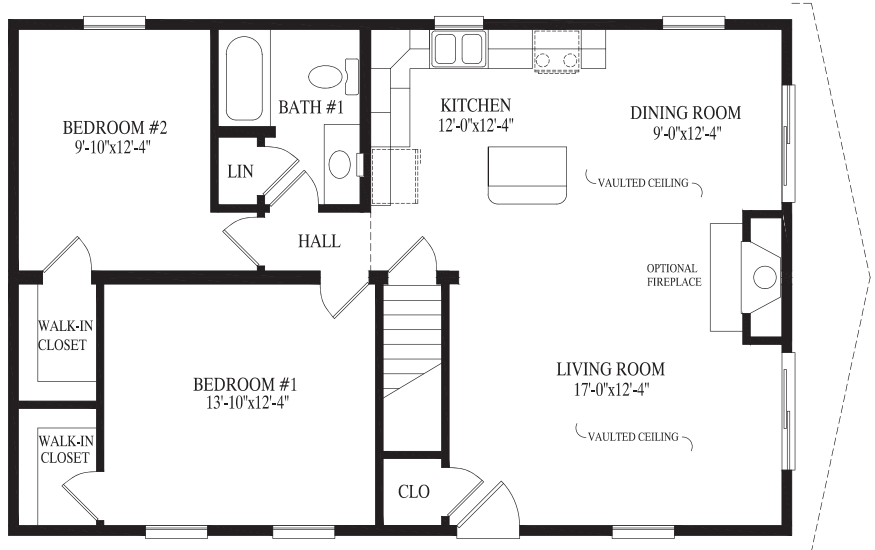




BRYCE

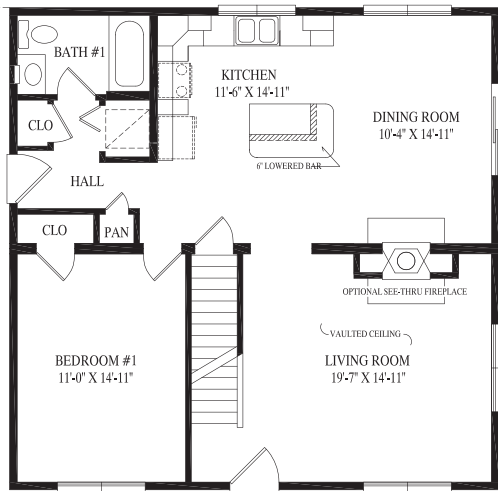
Bryce

26' 4" x 40'
1053 sq. ft.



Pike

31' 6" x 32'
1008 sq. ft. first floor
530 sq. ft. proposed second floor
1538 total sq. ft.



OPTIONAL PORCH
5'-0" x 95'-0"



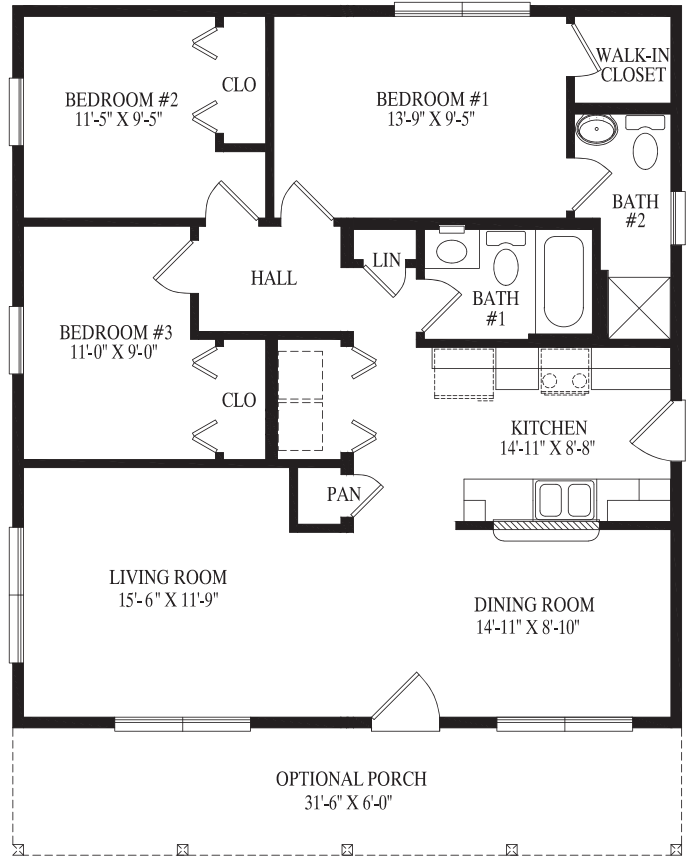
Featured on the front cover

PIKE

BRIDGETOWN



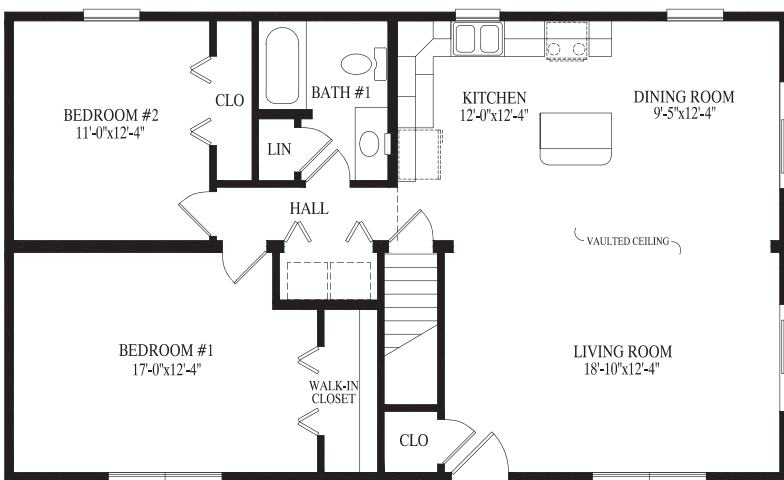
Bridgetown
31' 6" x 34'
1071 sq. ft.



MAVERICK

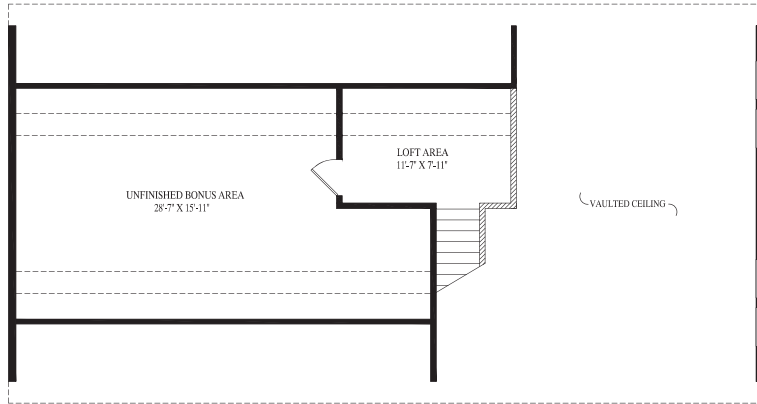
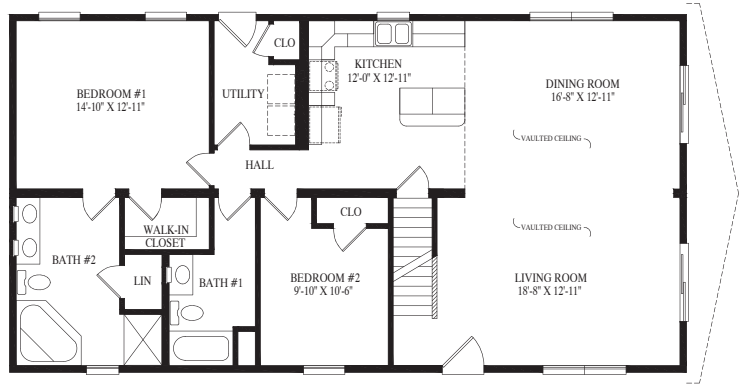


Maverick
26' 4" x 44'
1158 sq. ft.





TISBURY



Tisbury

27' 6" x 52'

1430 sq. ft. first floor

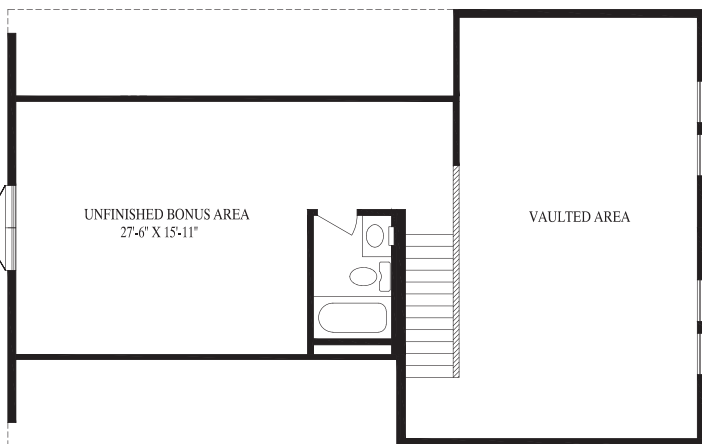
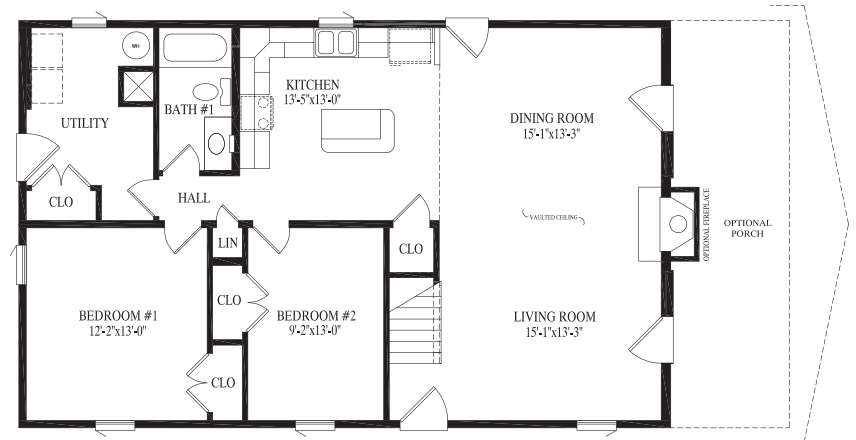
501 sq. ft. unfinished second floor

Somerset II

27' 6" x 44'

1210 sq. ft. first floor

440 sq. ft. unfinished second floor

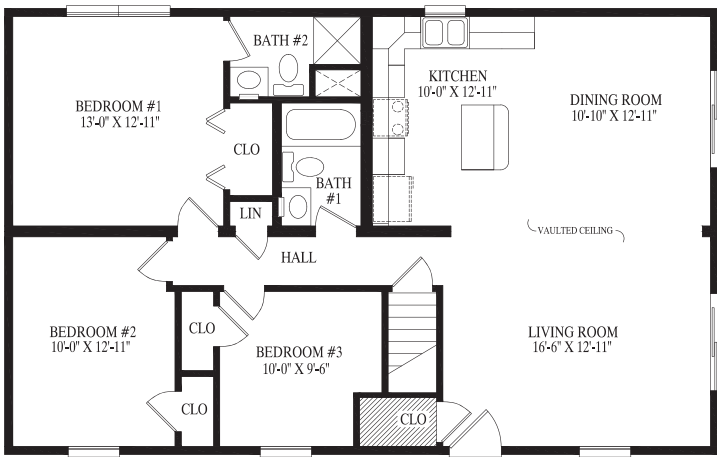


SOMERSET II

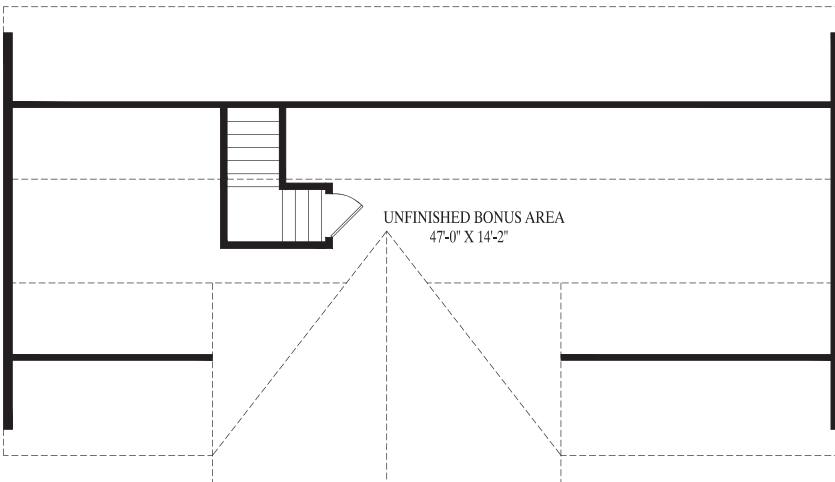
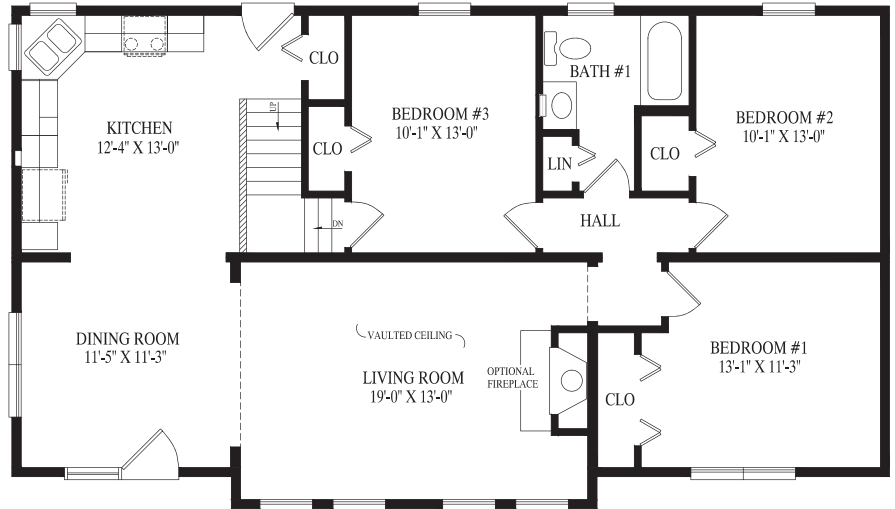
KENNEBUNK

Kennebunk

27' 6" x 44'
1210 sq. ft.



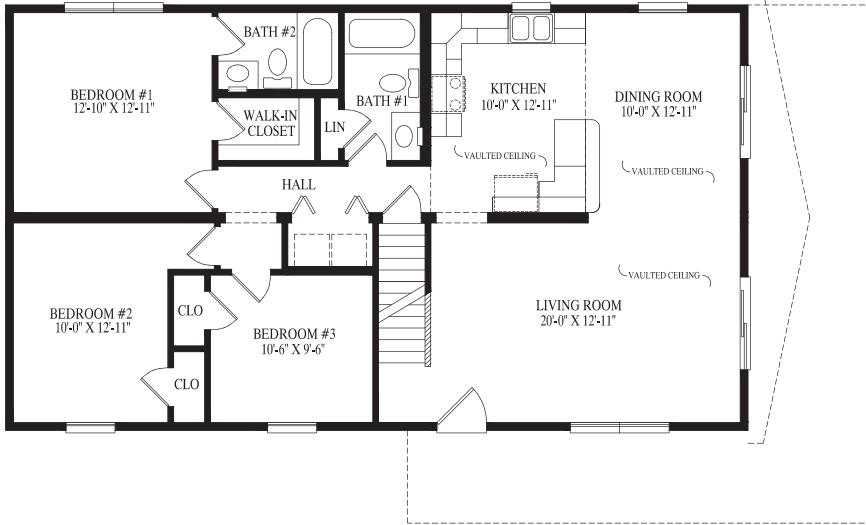
ADIRONDACK



Adirondack

27' 6" x 46'
1271 sq. ft. first floor
712 sq. ft. proposed second floor

BOOTH BAY

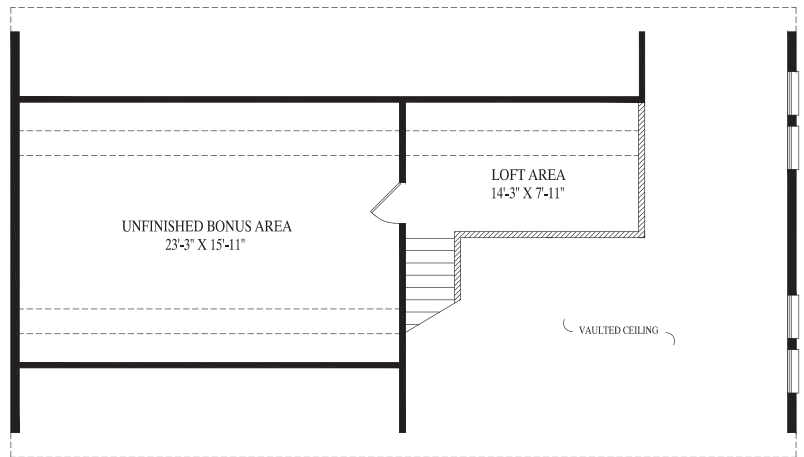


Booth Bay

27' 6" x 48'

1320 sq. ft. first floor

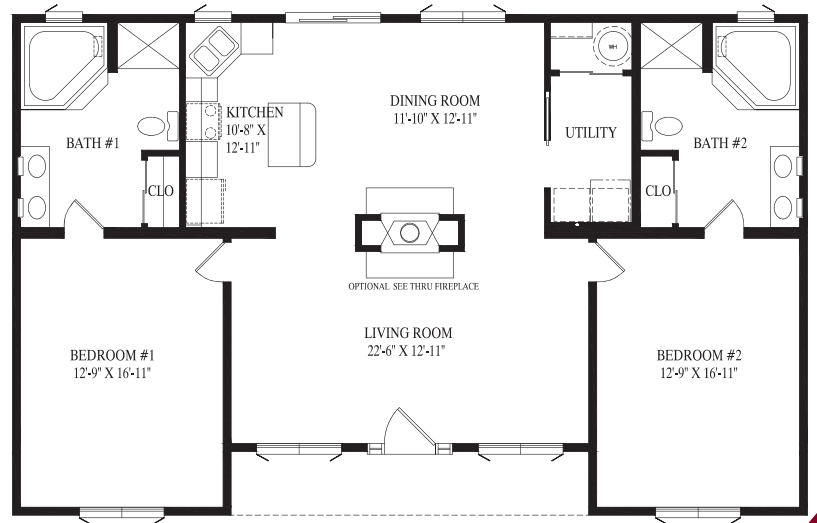
526 sq. ft. unfinished second floor



Twin Peaks

31' 6" x 50'

1485 sq. ft.

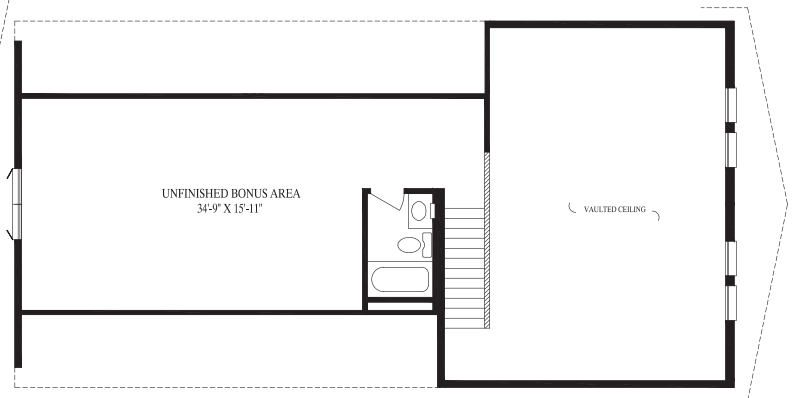
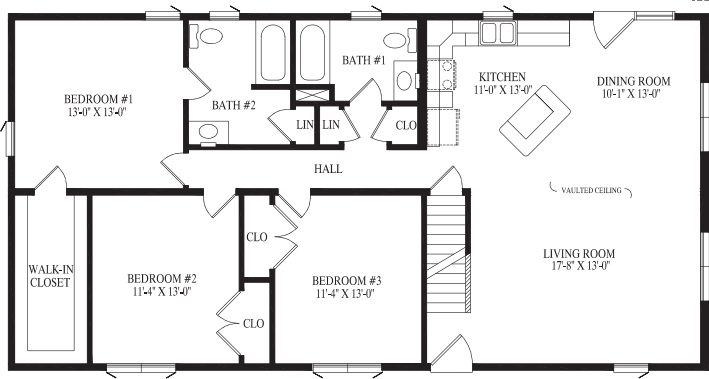


TWIN PEAKS

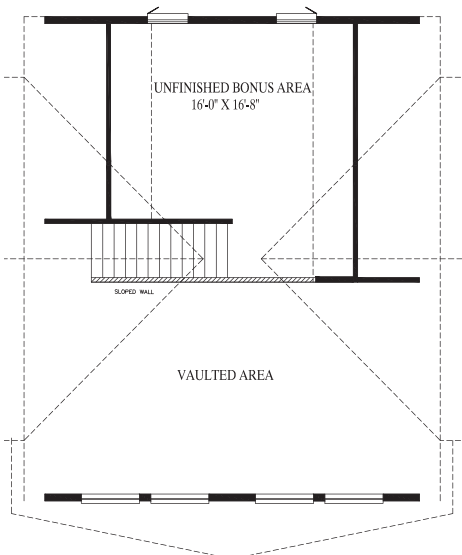
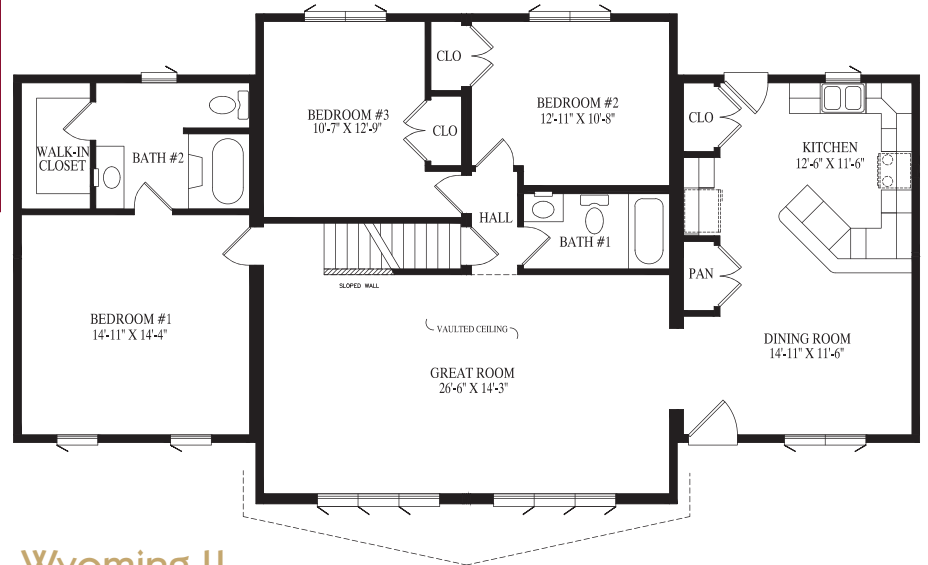
SOMERSET III

Somerset III

27' 6" x 54'
 1485 sq. ft. first floor
 590 sq. ft. proposed
 second floor



WYOMING II

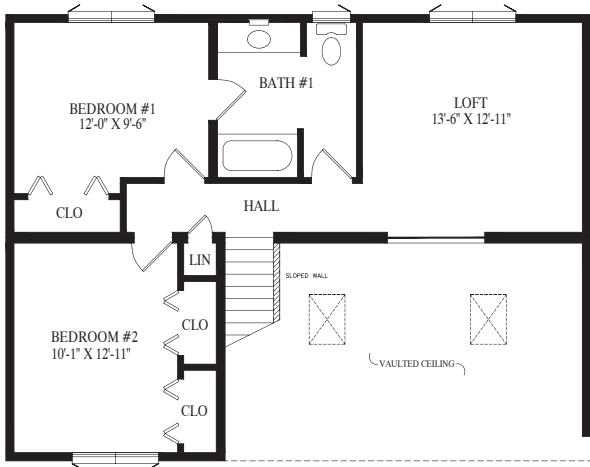
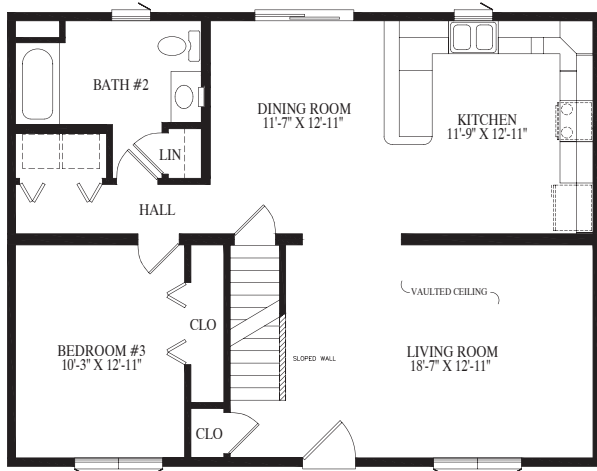


Wyoming II

32' x 59' 2"
 1641 sq. ft. first floor
 290 sq. ft. unfinished second floor



MONTEREY



Monterey

27' 6" x 36'

990 sq. ft. first floor

688 sq. ft. second floor

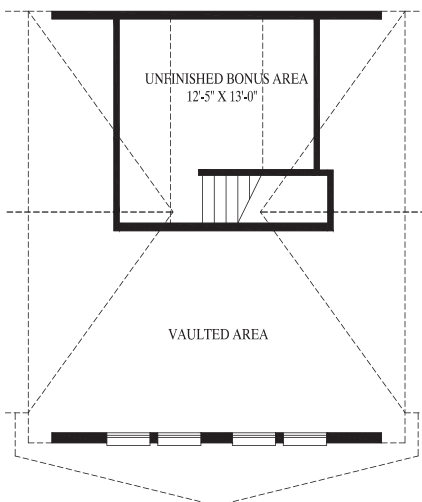
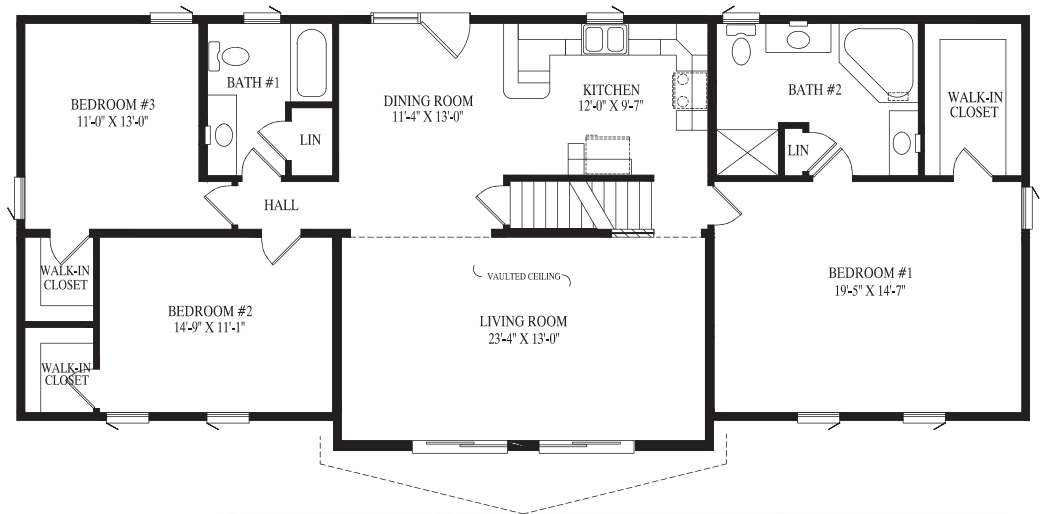
1678 sq. ft. total

Wyoming I

27' 6" x 64'

1683 sq. ft. first floor

186 sq. ft. unfinished second floor



WYOMING I

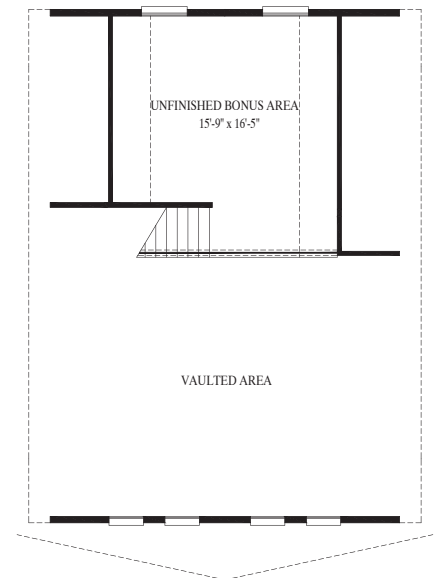
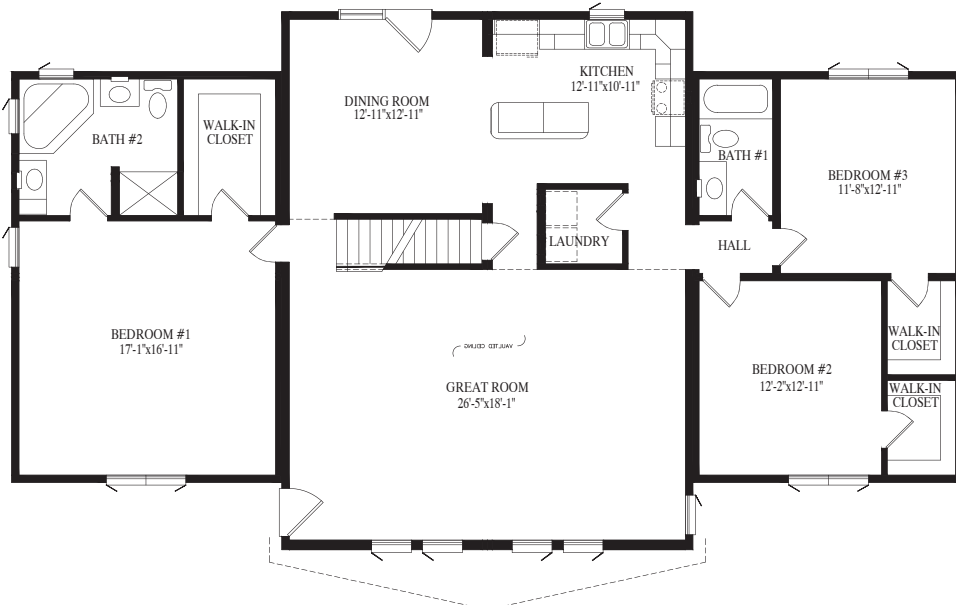
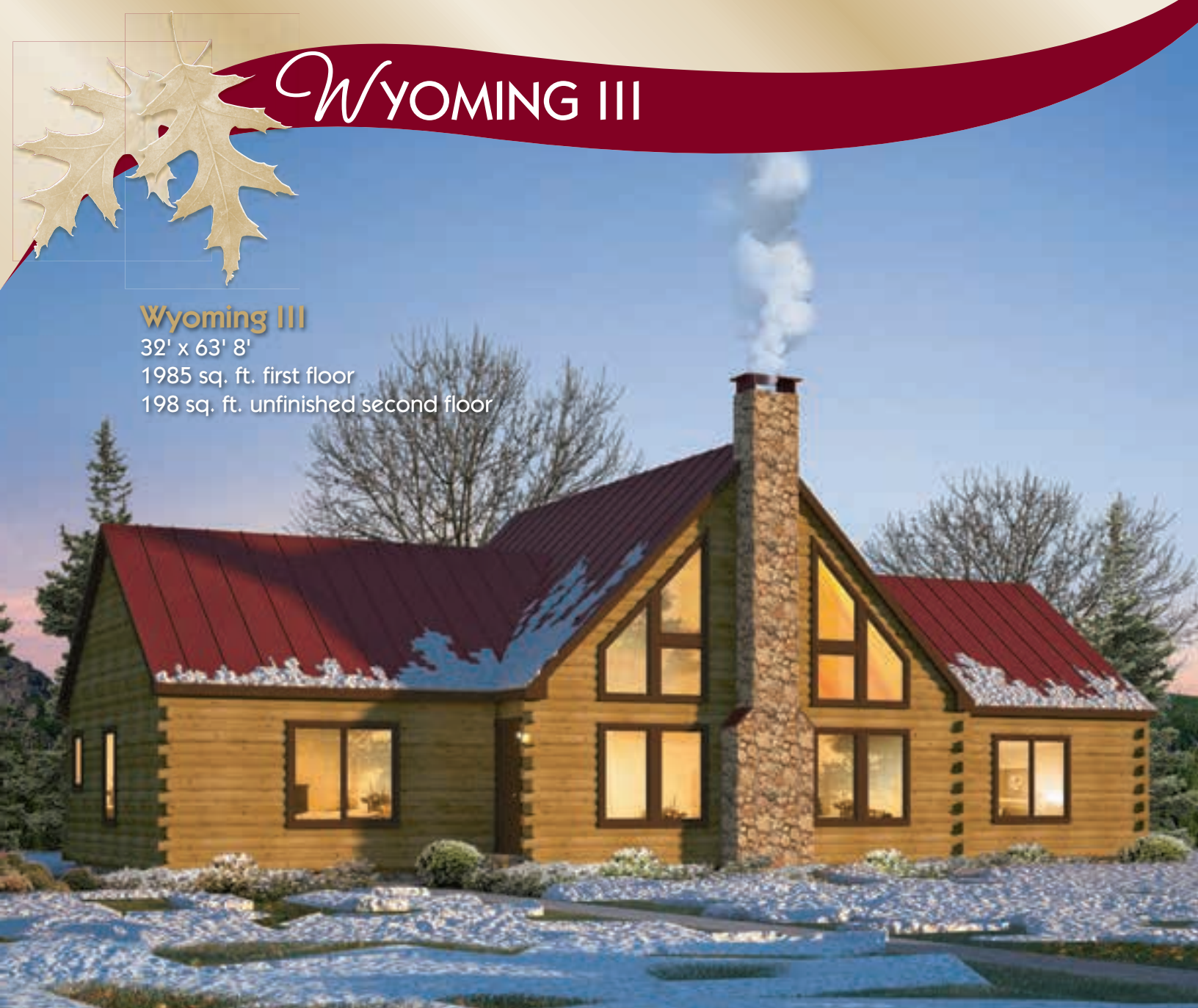
WYOMING III

Wyoming III

32' x 63' 8"

1985 sq. ft. first floor

198 sq. ft. unfinished second floor



Popular Exterior Options...



7/12 Cathedral Ceiling
with Trapezoid Windows



7/12 Vaulted Ceilings
with Trapezoid Windows



9/12 Vaulted Ceiling with Trapezoid
Windows and Sliding Glass Doors



9/12 Vaulted Ceiling with
Custom Trapezoid Windows



12/12 Vaulted Ceiling with
Trapezoid Windows over Windows



12/12 Vaulted Ceiling with Trapezoid
Windows over Sliding Glass Doors



12/12 Vaulted Ceiling with Trapezoid
Windows over Windows with Chimney



36" High Sloped Railing



36" High Sloped Wall

Great Homes Start With Quality Products...





Professional Building Systems, Inc.

200 Custom Avenue
Middleburg, PA 17842
Phone (800) 837-4552
info@pbsmodular.com
www.pbsmodular.com

*Professional Building Systems Inc. is a division of
Modular Building Systems of PA*
www.modularbuildingsystemsofpa.com

Your PBS Builder/Developer

Builders/Developers are not agents of Professional Building Systems.