



Designer  
TWO-STORY

7172 Route 522N • Middleburg, PA 17842  
570.837.2333 • 1.800.326.9524 • fax 570.837.2346 • website [www.apexhomesinc.com](http://www.apexhomesinc.com)



the peak of perfection



## TWO-STORY

The elegant two-story home has always been America's favorite home. These designs encompass a wide variety of styles and layouts, from the small, clean traditional to the large, elaborate colonial and contemporary designs. These homes offer the owner the ability to add family rooms, breezeways and garages. Interiors and exteriors can be dressed to suit any taste.



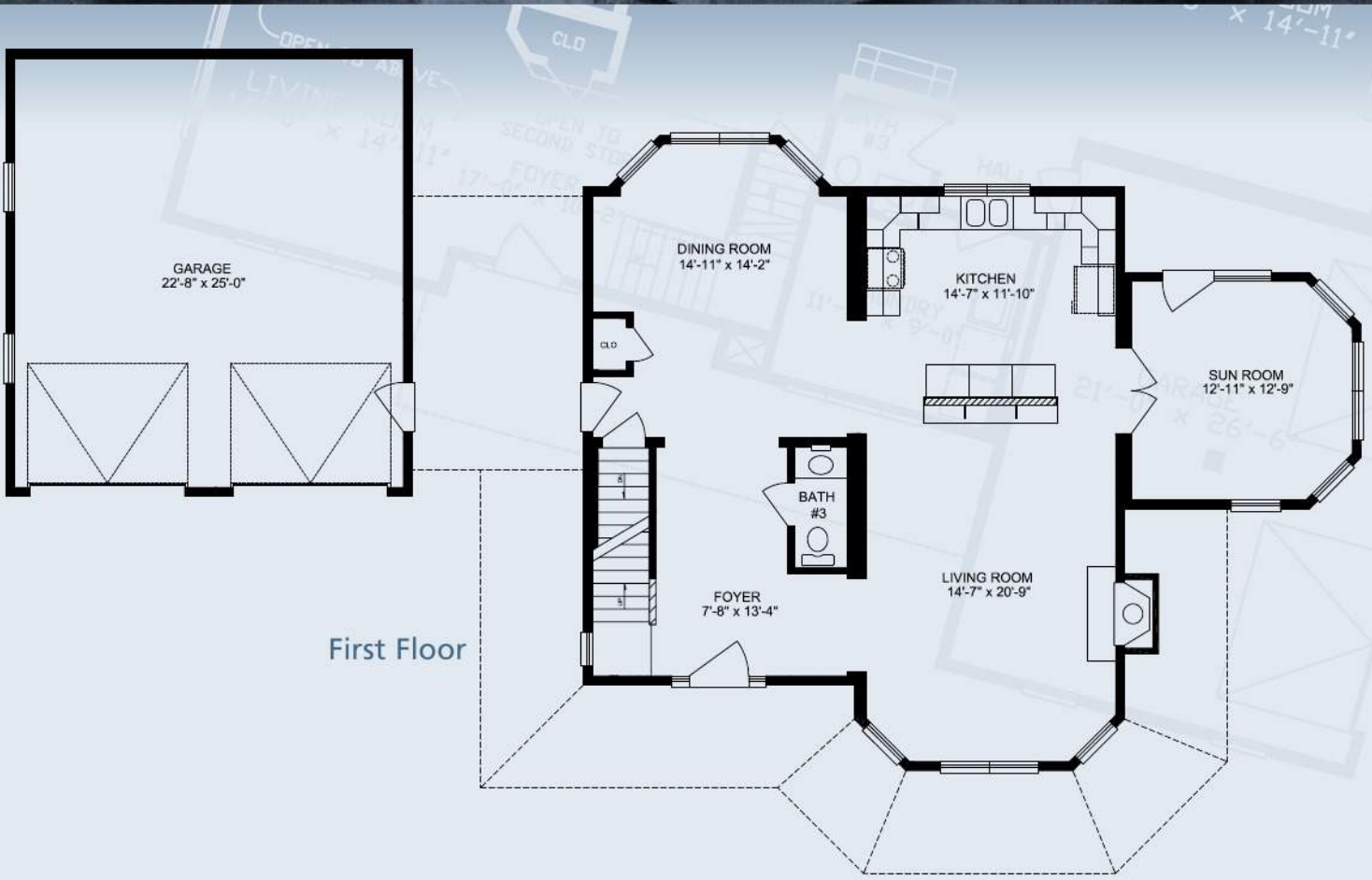
LINDEN

APEX HOMES, INC.

7172 Route 522N • Middleburg, PA 17842

570.837.2333 • 1.800.326.9524 • fax 570.837.2346 • website [www.apexhomesinc.com](http://www.apexhomesinc.com)





First Floor

2,401 Sq. Ft. without garage  
3,017 Sq. Ft. with garage



Second Floor



the peak of perfection



*H*AWTHORNE

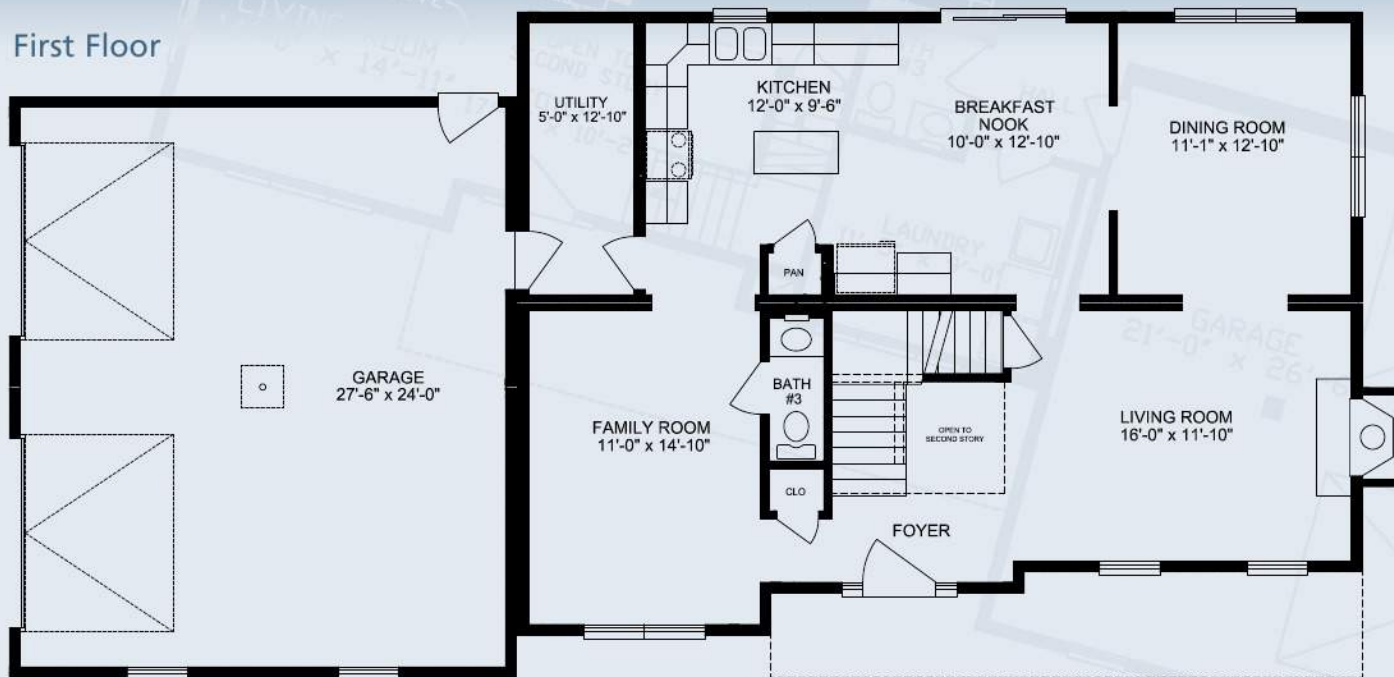
APEX HOMES, INC.

7172 Route 522N • Middleburg, PA 17842

570.837.2333 • 1.800.326.9524 • fax 570.837.2346 • website [www.apexhomesinc.com](http://www.apexhomesinc.com)



### First Floor



2,228 Sq. Ft. without garage  
2,888 Sq. Ft. with garage



**HAWTHORNE**

### Second Floor





the peak of perfection



JUNIPER

APEX HOMES, INC.

7172 Route 522N • Middleburg, PA 17842

570.837.2333 • 1.800.326.9524 • fax 570.837.2346 • website [www.apexhomesinc.com](http://www.apexhomesinc.com)



First Floor

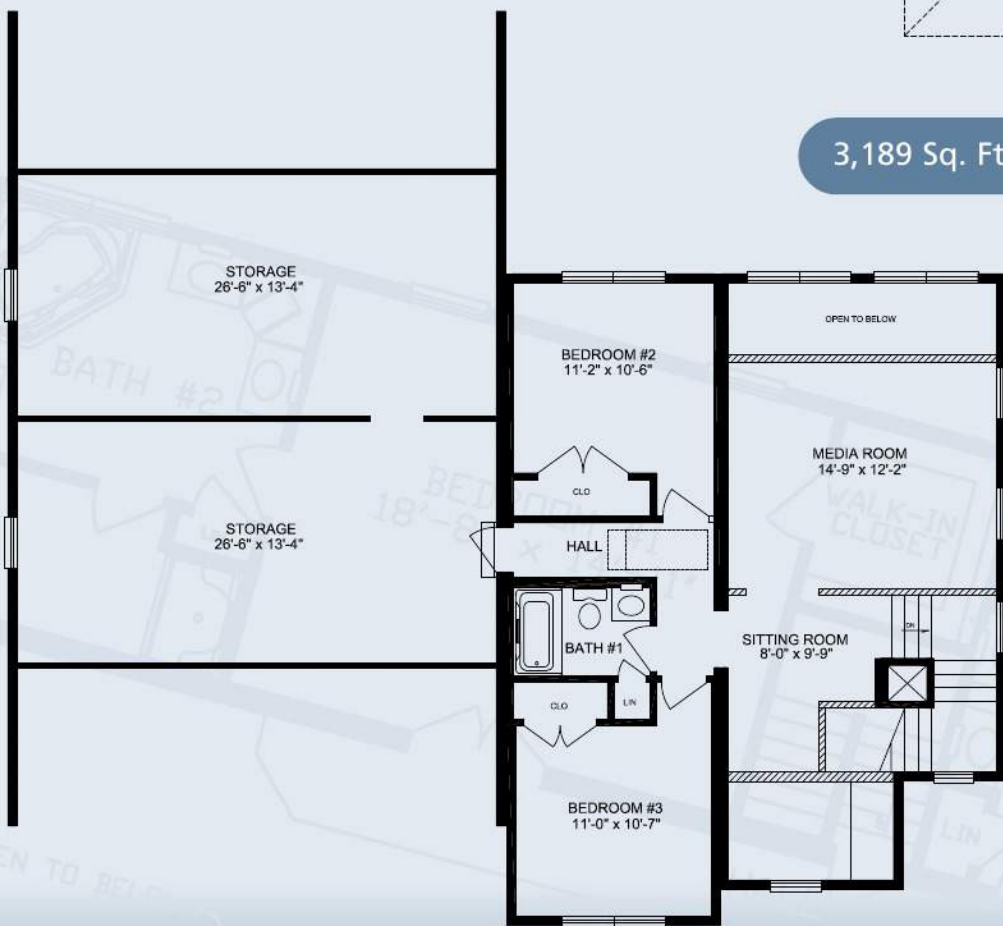


3,189 Sq. Ft. with garage



UNIPER

Second Floor





the peak of perfection



ONDEROSA

from the front cover

APEX HOMES, INC.

7172 Route 522N • Middleburg, PA 17842

570.837.2333 • 1.800.326.9524 • fax 570.837.2346 • website [www.apexhomesinc.com](http://www.apexhomesinc.com)





4,252 Sq. Ft. with garage



ANDEROSA





the peak of perfection



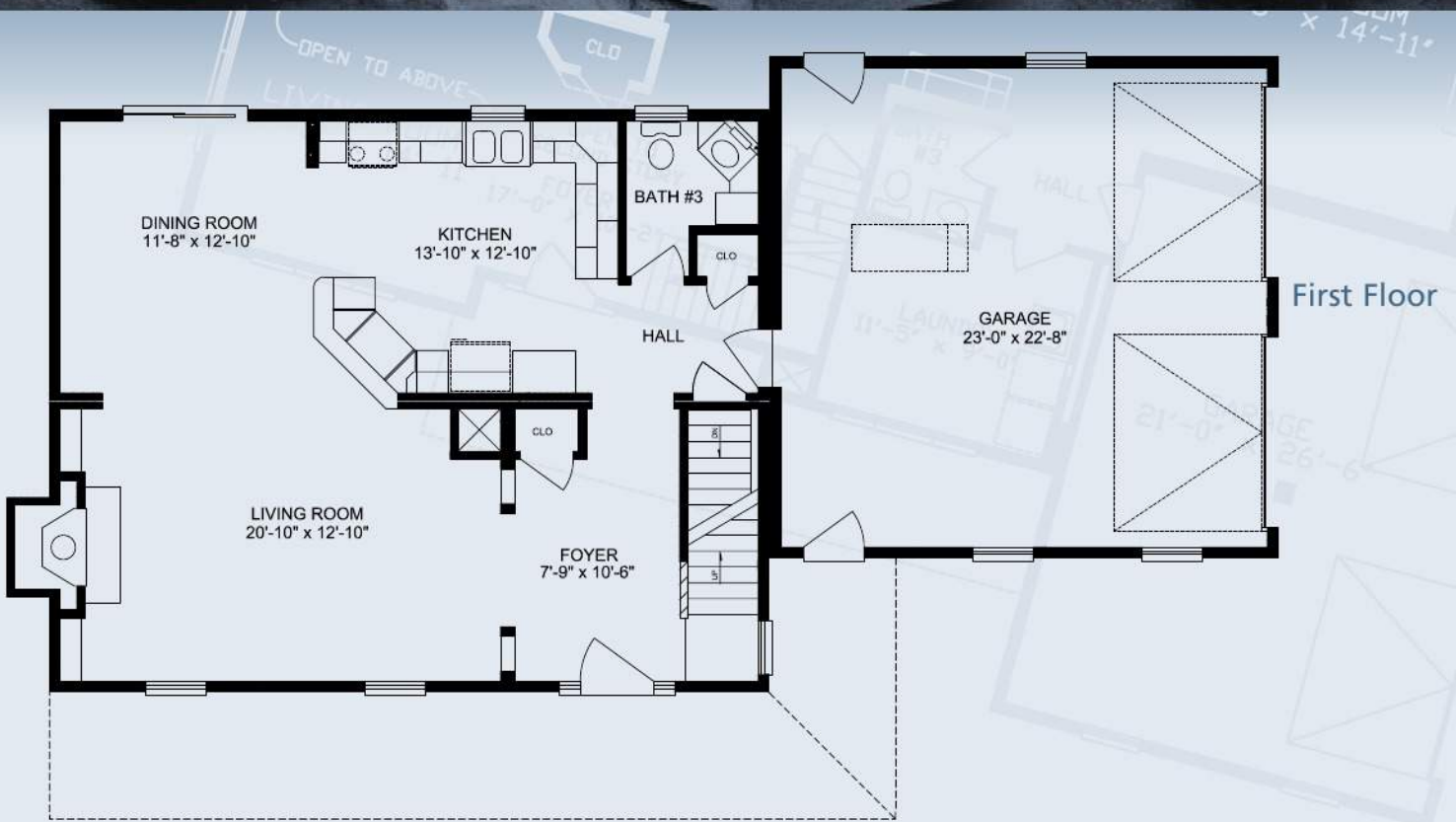
# HICKORY

APEX HOMES, INC.

7172 Route 522N • Middleburg, PA 17842

570.837.2333 • 1.800.326.9524 • fax 570.837.2346 • website [www.apexhomesinc.com](http://www.apexhomesinc.com)





1,870 Sq. Ft. without garage  
2,438 Sq. Ft. with garage



**HICKORY**

**Second Floor**





the peak of perfection



*V*ICKSBURG

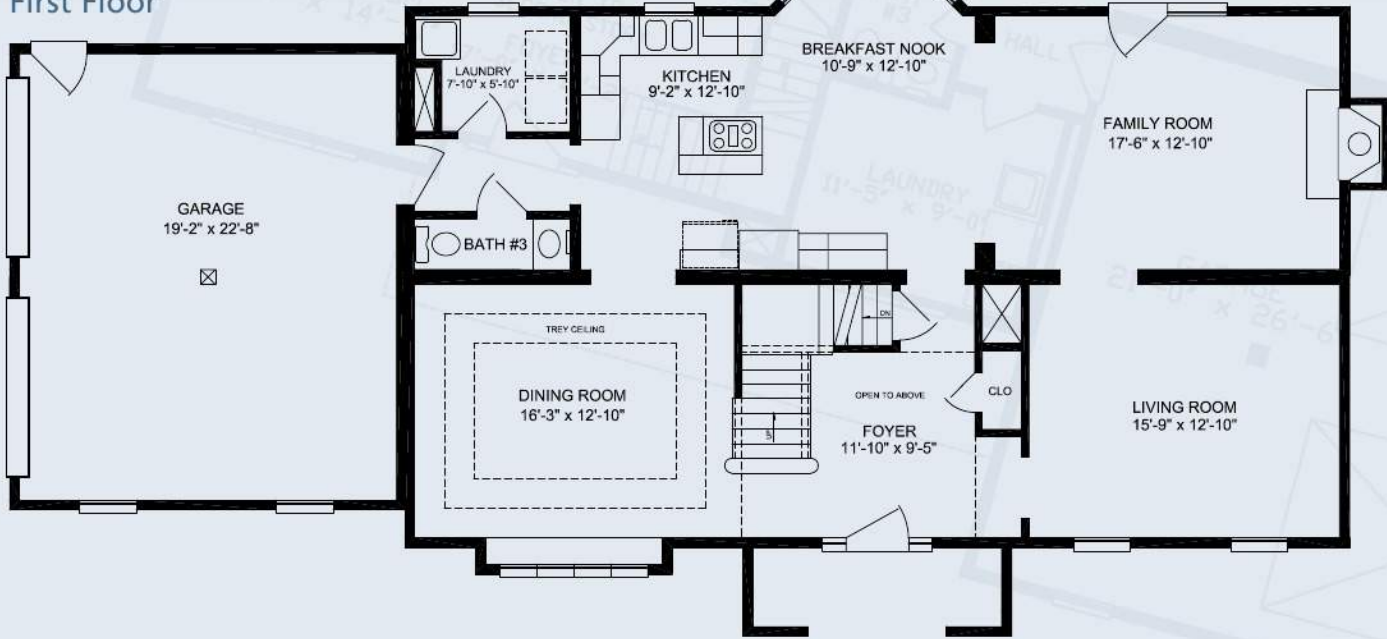
APEX HOMES, INC.

7172 Route 522N • Middleburg, PA 17842

570.837.2333 • 1.800.326.9524 • fax 570.837.2346 • website [www.apexhomesinc.com](http://www.apexhomesinc.com)



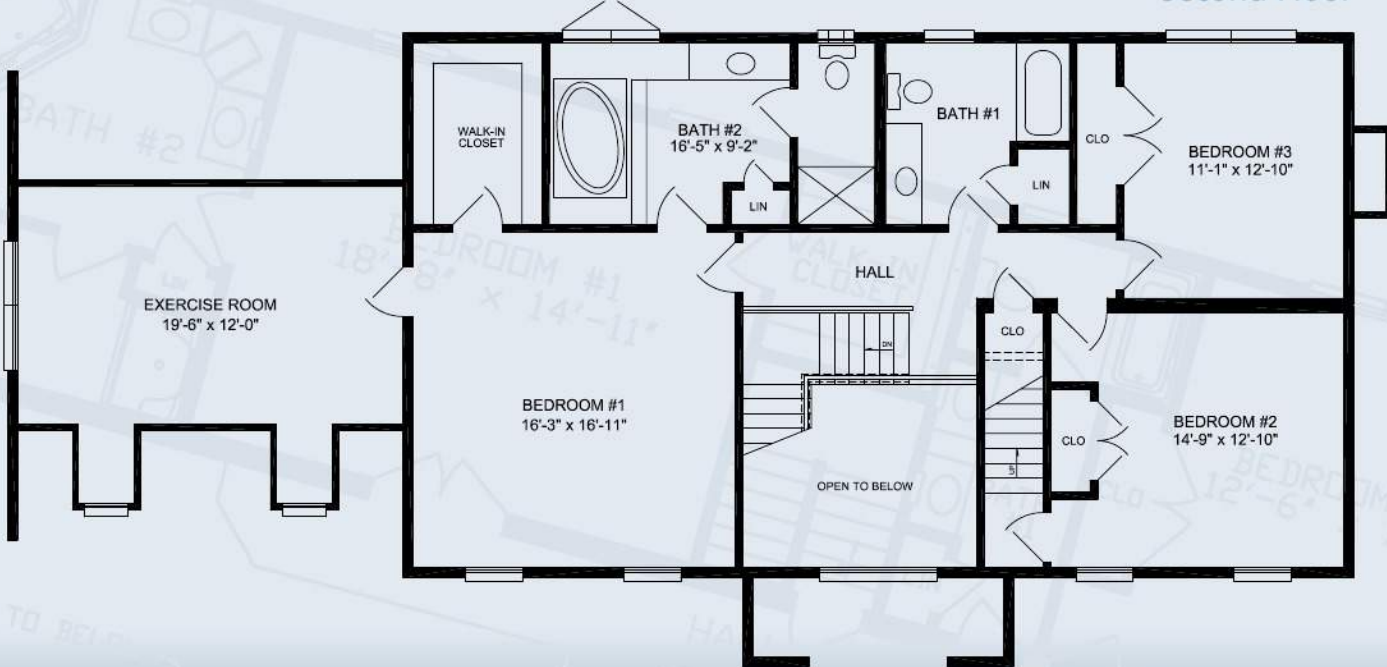
First Floor



2,806 Sq. Ft. without garage  
3,375 Sq. Ft. with garage



Second Floor





the peak of perfection



M

MULBERRY

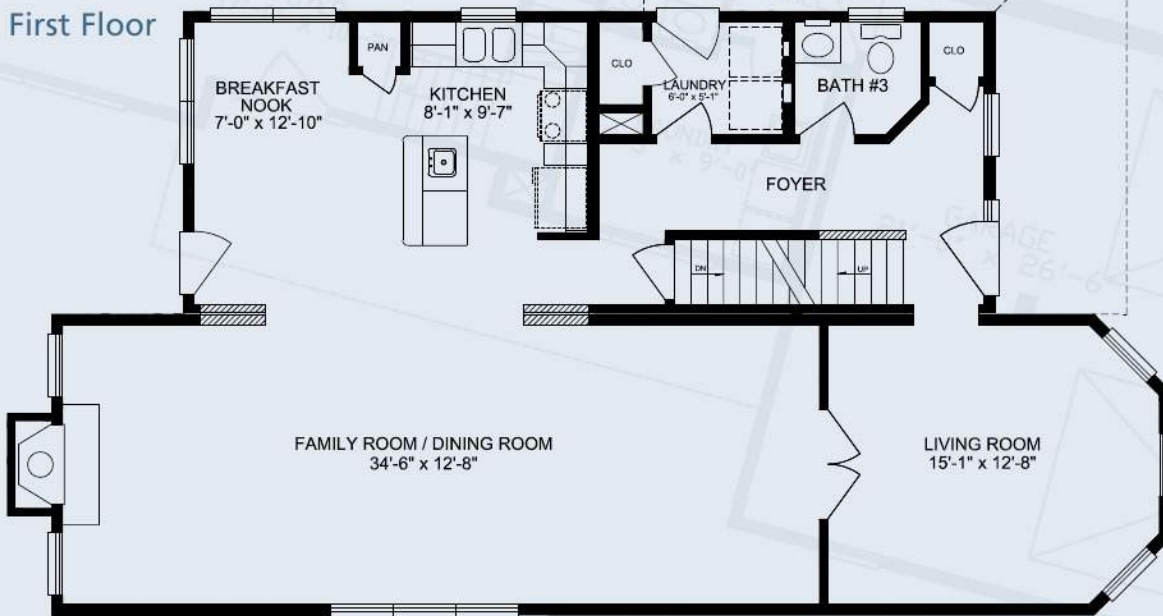
APEX HOMES, INC.

7172 Route 522N • Middleburg, PA 17842

570.837.2333 • 1.800.326.9524 • fax 570.837.2346 • website [www.apexhomesinc.com](http://www.apexhomesinc.com)



First Floor

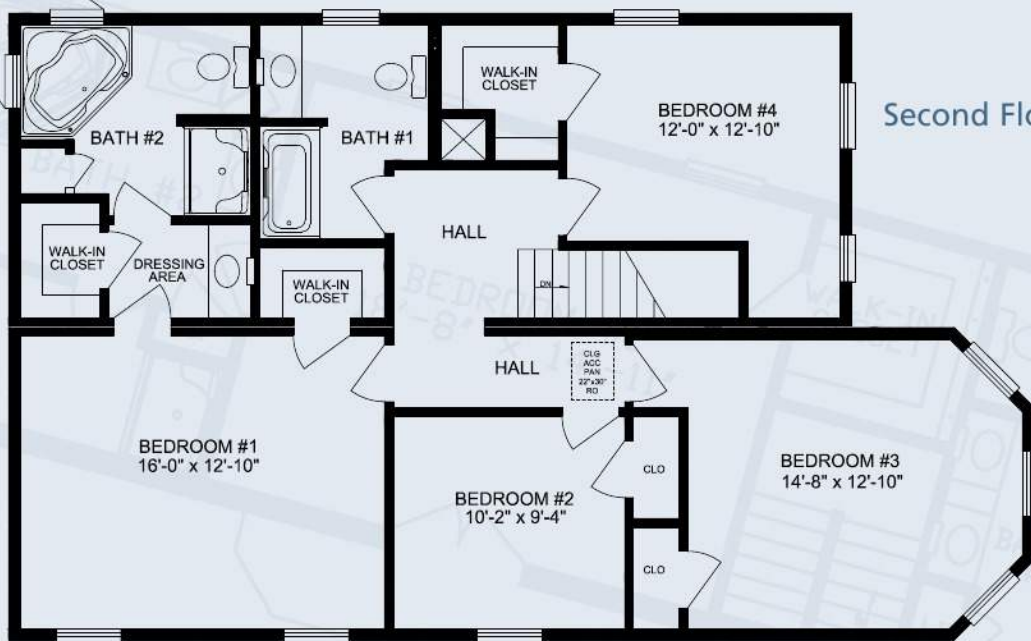


2,337 Sq. Ft.



MULBERRY

Second Floor





the peak of perfection



*M*AGNOLIA

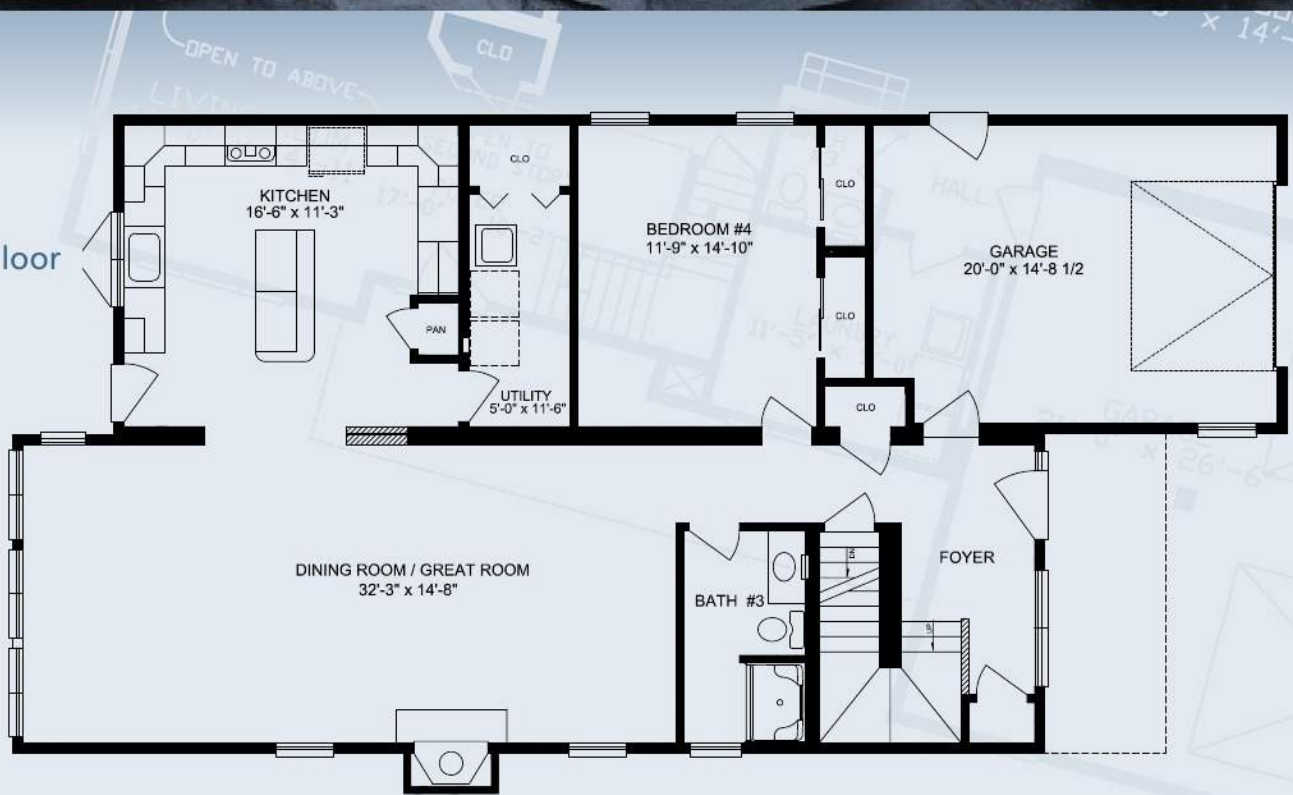
APEX HOMES, INC.

7172 Route 522N • Middleburg, PA 17842

570.837.2333 • 1.800.326.9524 • fax 570.837.2346 • website [www.apexhomesinc.com](http://www.apexhomesinc.com)



First Floor

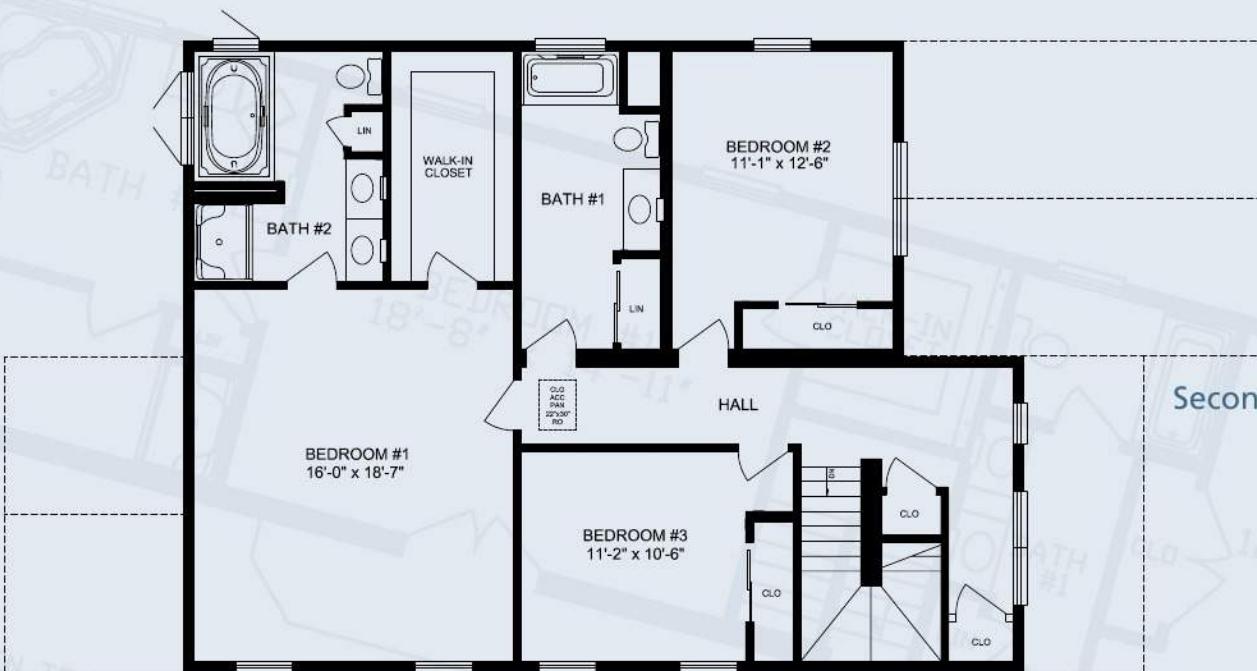


2,945 Sq. Ft. with garage



AGNOLIA

Second Floor





the peak of perfection



IRONWOOD

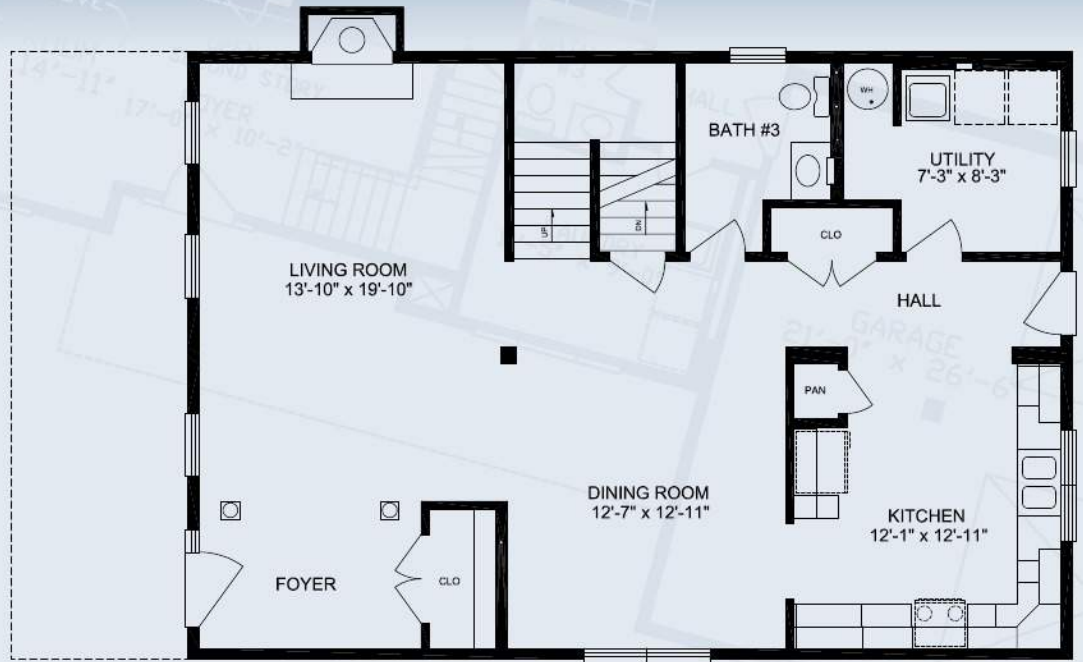
APEX HOMES, INC.

7172 Route 522N • Middleburg, PA 17842

570.837.2333 • 1.800.326.9524 • fax 570.837.2346 • website [www.apexhomesinc.com](http://www.apexhomesinc.com)



First Floor

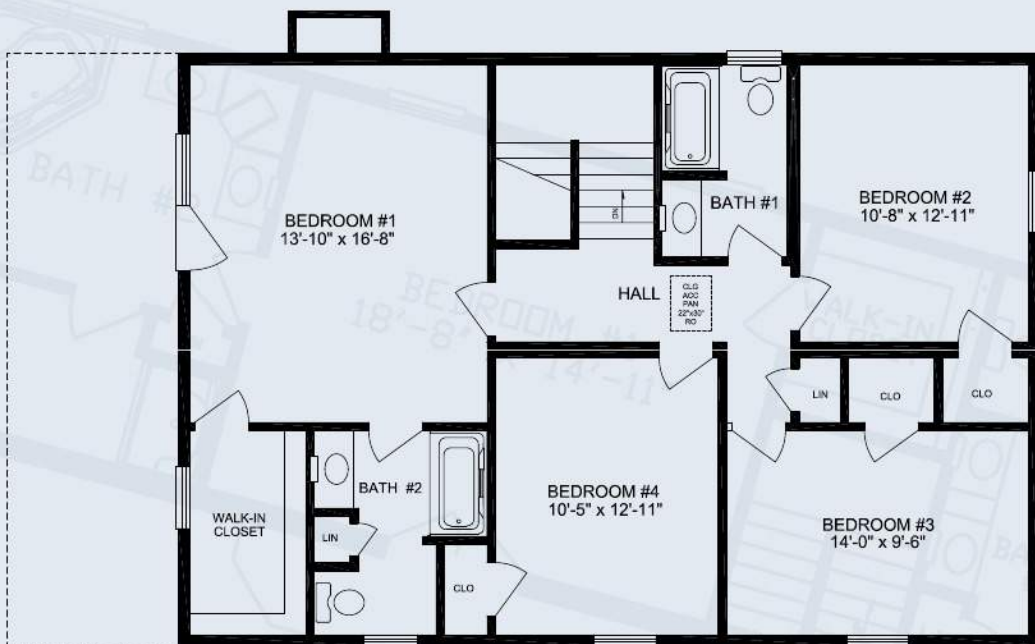


2,420 Sq. Ft.



RONWOOD

Second Floor





the peak of perfection



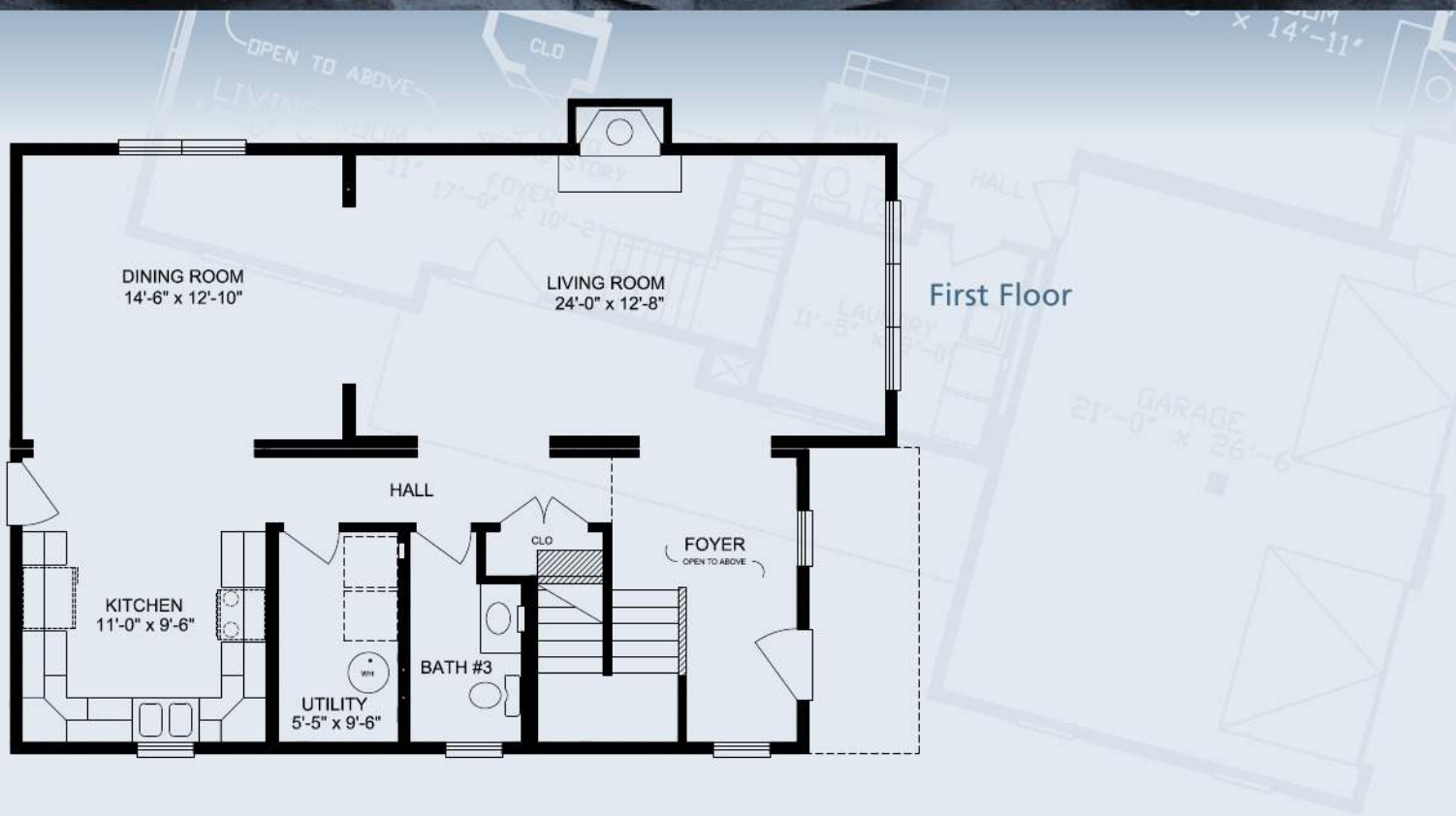
S  
LDER

APEX HOMES, INC.

7172 Route 522N • Middleburg, PA 17842

570.837.2333 • 1.800.326.9524 • fax 570.837.2346 • website [www.apexhomesinc.com](http://www.apexhomesinc.com)





2,100 Sq. Ft.



SLDER

**Second Floor**





the peak of perfection



S YCAMORE

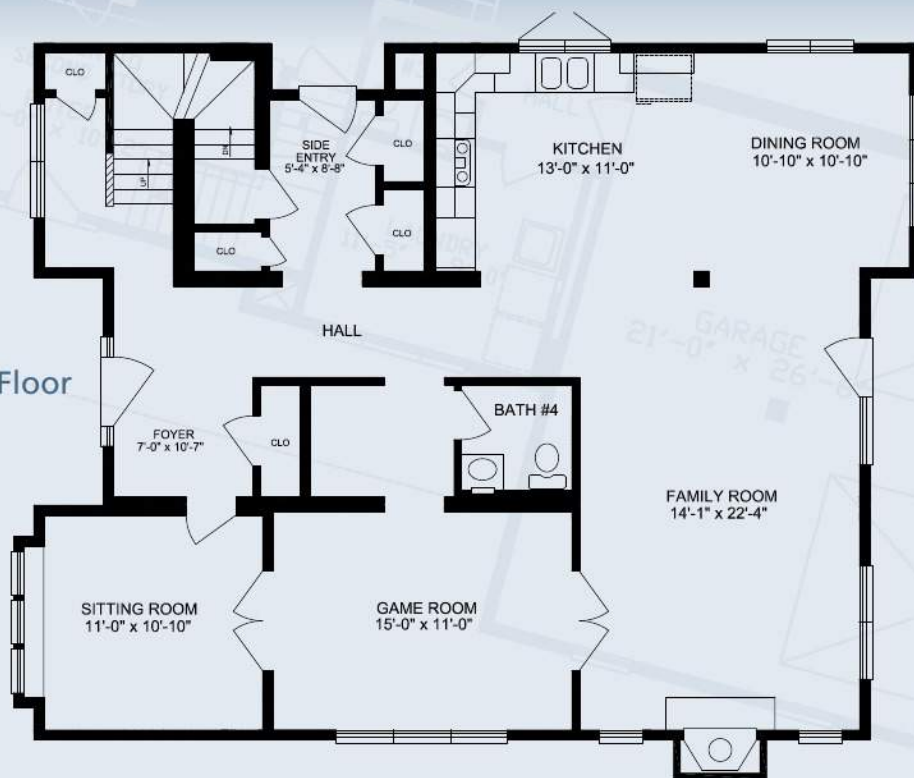
APEX HOMES, INC.

7172 Route 522N • Middleburg, PA 17842

570.837.2333 • 1.800.326.9524 • fax 570.837.2346 • website [www.apexhomesinc.com](http://www.apexhomesinc.com)



First Floor



2,925 Sq. Ft.



SYCAMORE

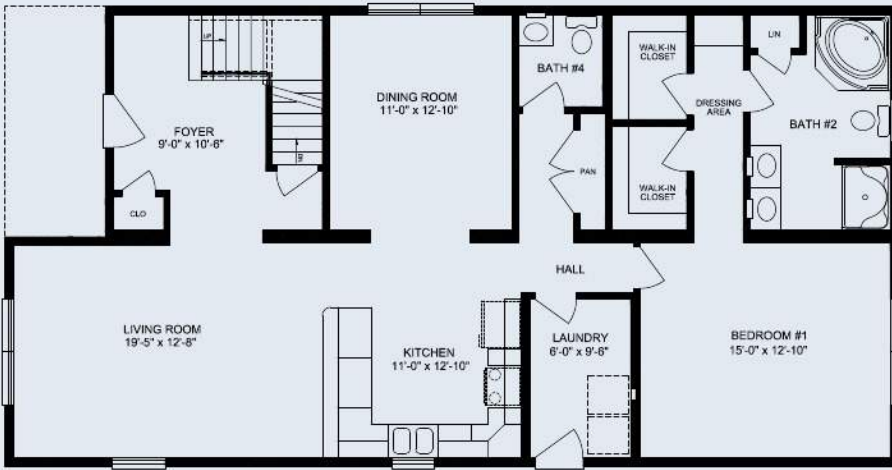
Second Floor





# the peak of perfection

## First Floor



## Second Floor



2,777 Sq. Ft.



**MAPLE**

Your Authorized Builder:



7172 Route 522 N  
Middleburg, PA 17842

570.837.2333

1.800.326.9524

fax 570.837.2346

website [www.apexhomesinc.com](http://www.apexhomesinc.com)

Note: Artist renderings may show options not included in the standard specifications.