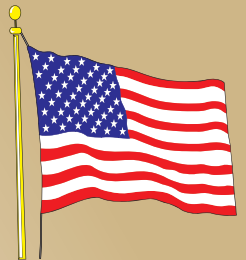


Building
AMERICA'S
Future... Today!

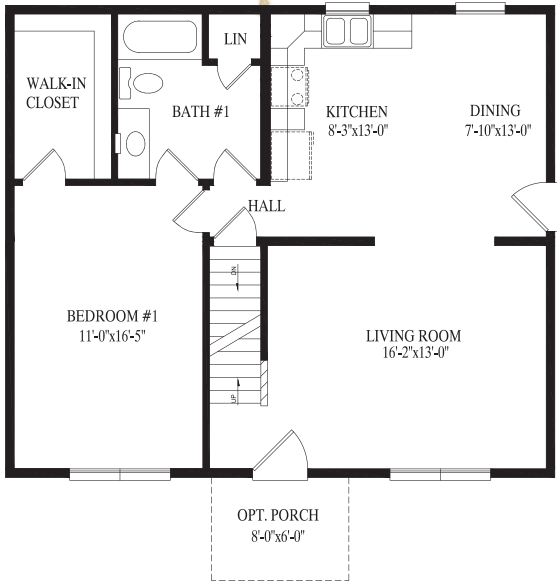


Cape Homes

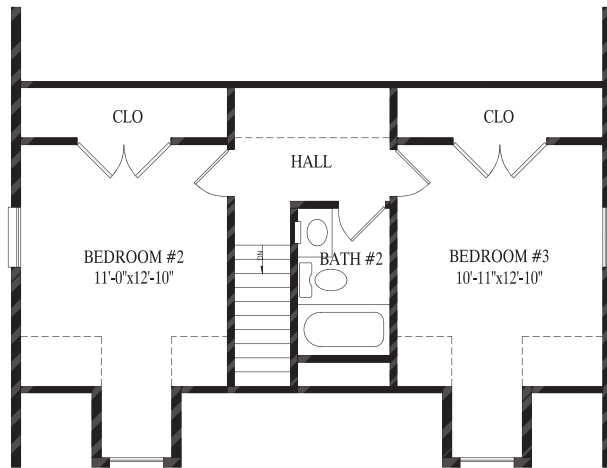


Made in USA

NORTHAMPTON



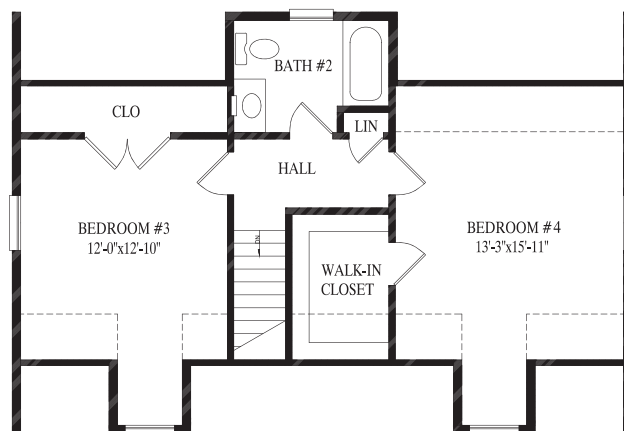
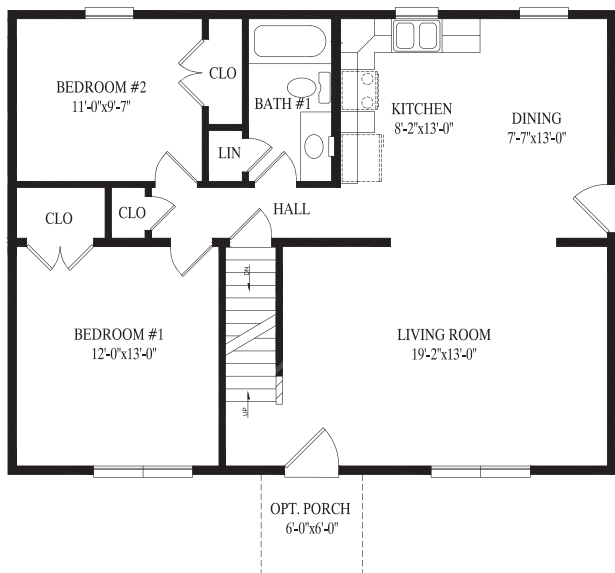
Northampton I
27' 6" x 32' Cape
880 sq. ft. first floor



Proposed Second Floor – 568 sq. ft.



Northampton II
27' 6" x 36' Cape
990 sq. ft. first floor



Proposed Second Floor – 674 sq. ft.

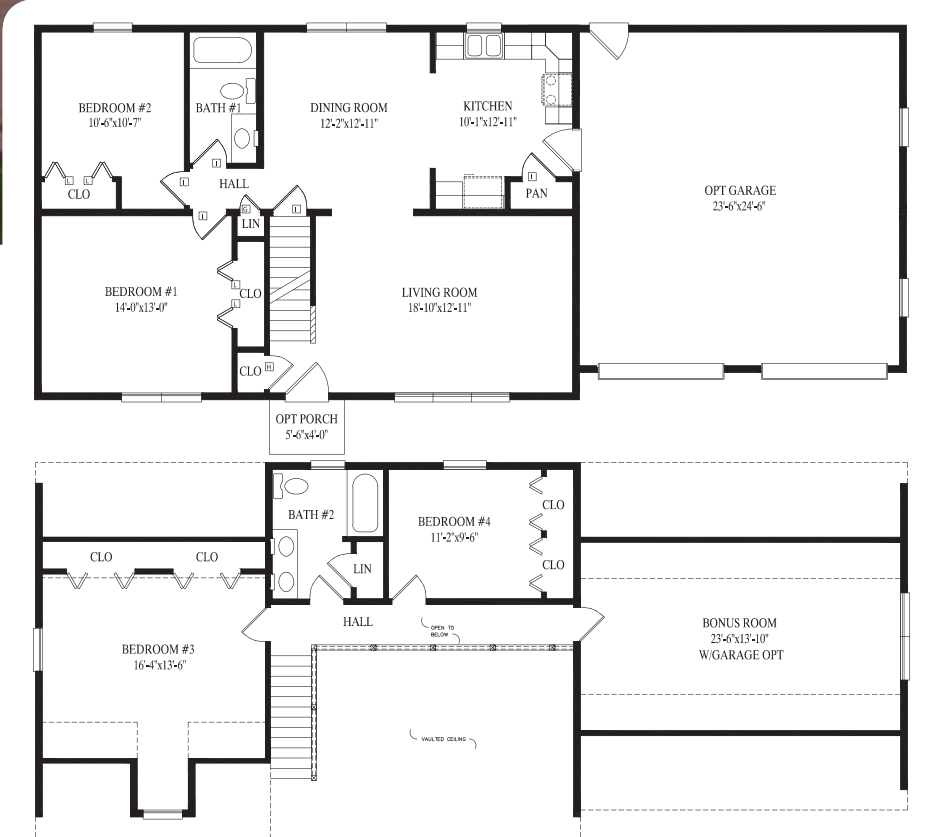
NOTE: Above models also available in 26' 4" & 31' 6" wide



Featured on the rear cover

Northampton III

27' 6" x 40' Cape
 1100 sq. ft. first floor
 1812 sq. ft. w/garage option



Proposed Second Floor – 645 sq. ft.
 w/garage option – 995 sq. ft.



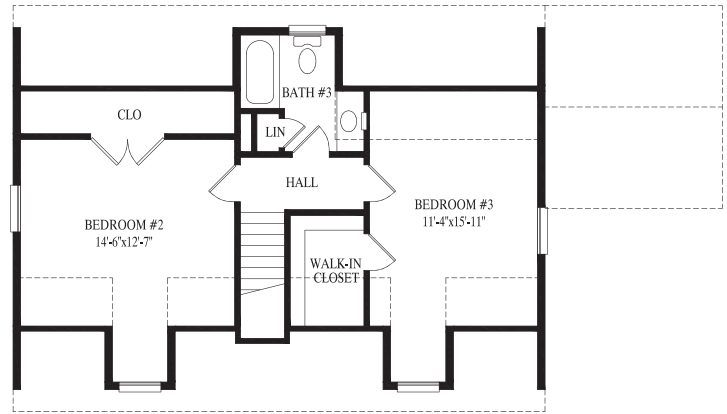
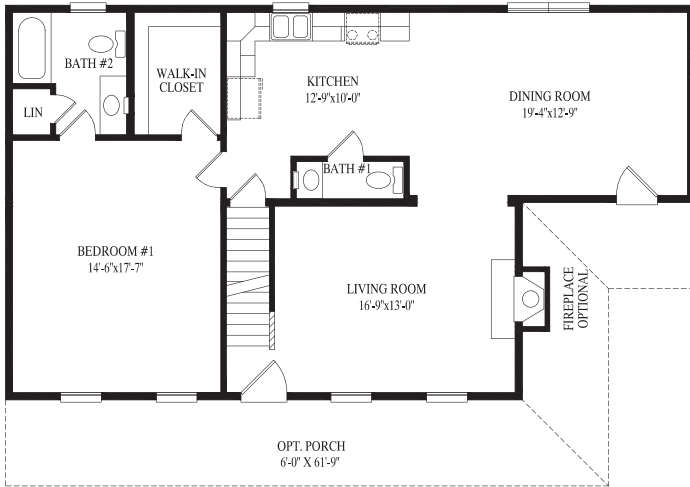
CAMERON

Cameron I

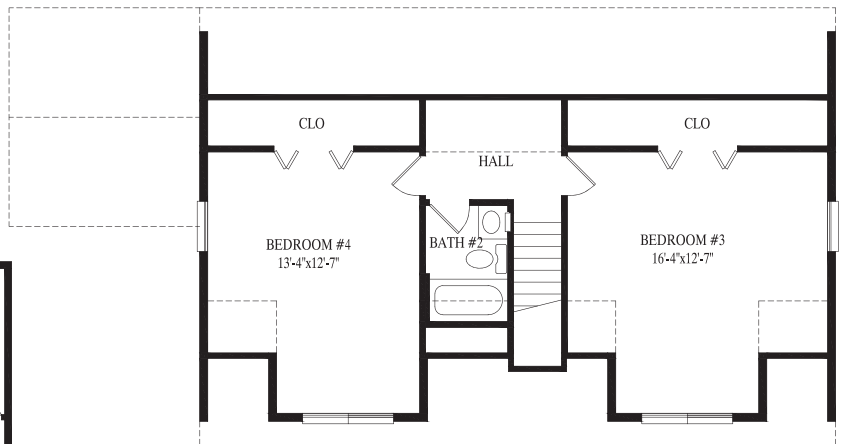
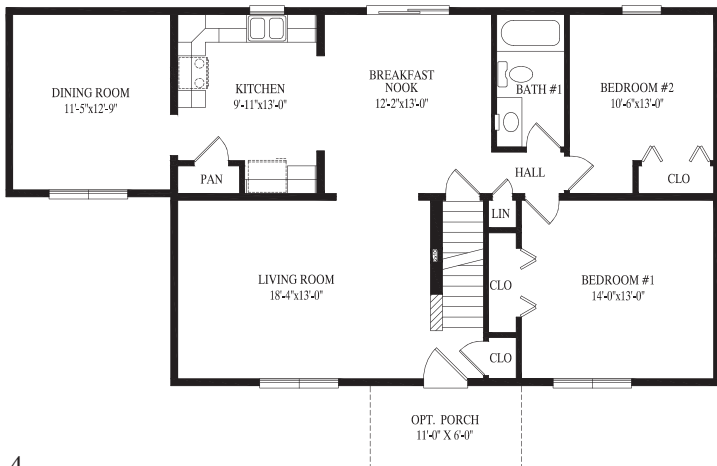
27' 6" x 36' 1/48' Cape
1155 sq. ft. first floor
Also available in 26' 4" & 31' 6" wide



Featured on the front cover



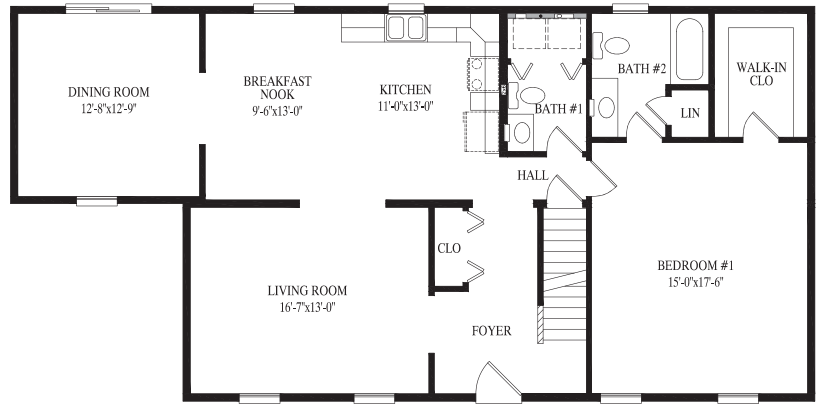
Proposed Second Floor – 667 sq. ft.



Proposed Second Floor – 745 sq. ft.

Cameron II

27' 6" x 40' 1/52' Cape
1265 sq. ft. first floor
Also available in 26' 4" & 31' 6" wide

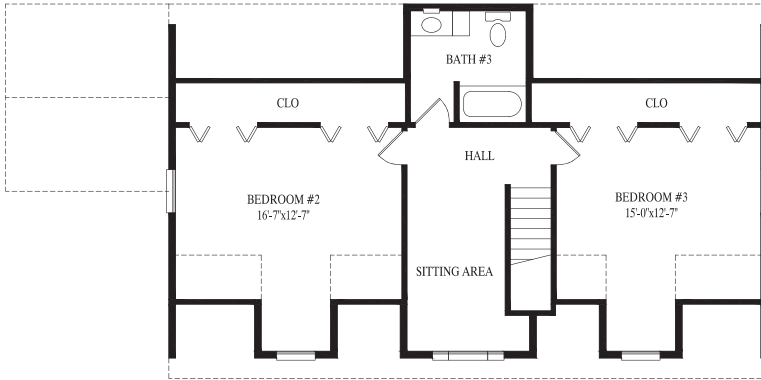


Cameron III

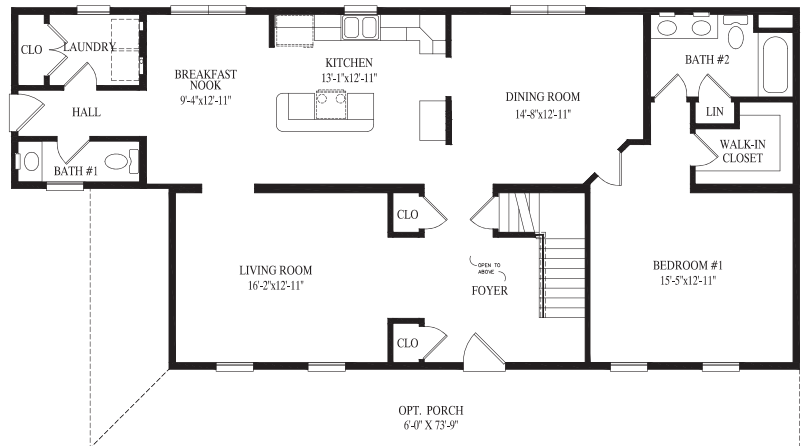
27' 6" x 44' 56" Cape

1375 sq. ft. first floor

Also available in 26' 4" & 31' 6" wide



Proposed Second Floor – 871 sq. ft.

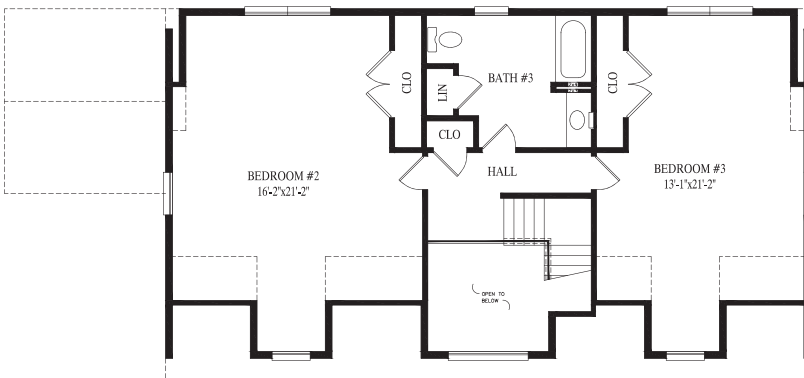


Cameron IV

27' 6" x 48' 60" Cape

1485 sq. ft. first floor

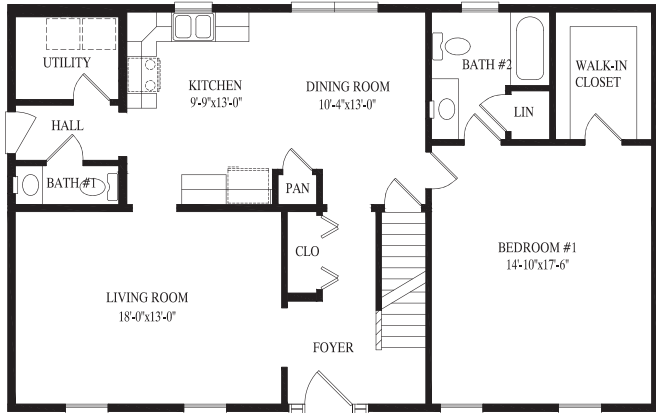
Also available in 26' 4" & 31' 6" wide



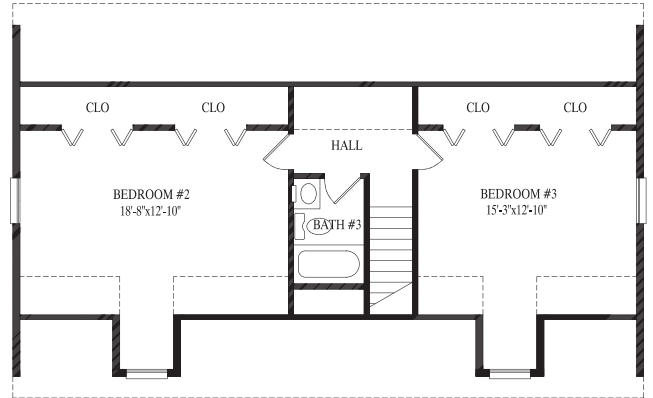
Proposed Second Floor – 1137 sq. ft.



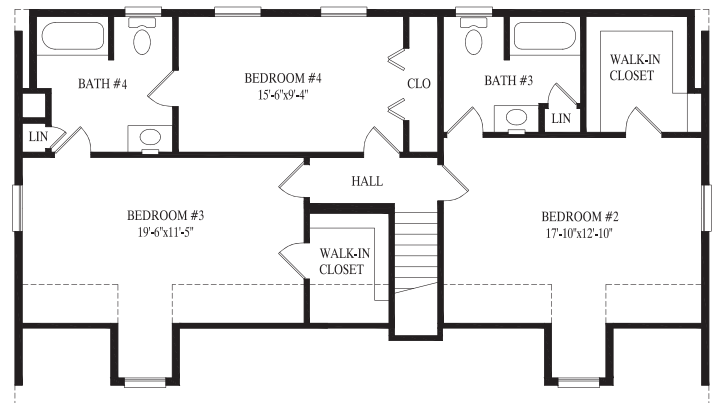
HUNTINGTON



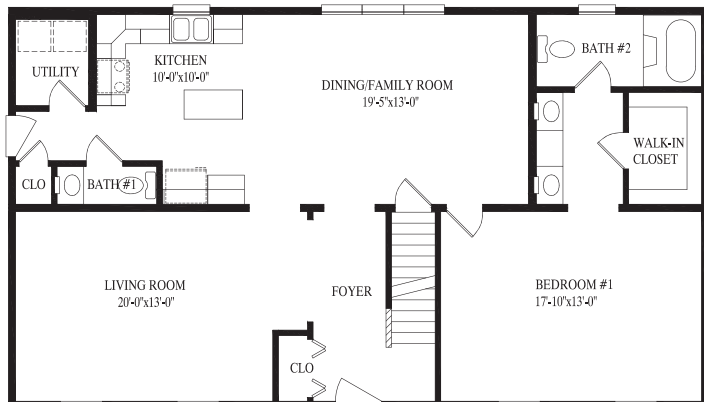
Huntington I
27' 6" x 44' Cape
1210 sq. ft. first floor



Proposed Second Floor – 767 sq. ft.

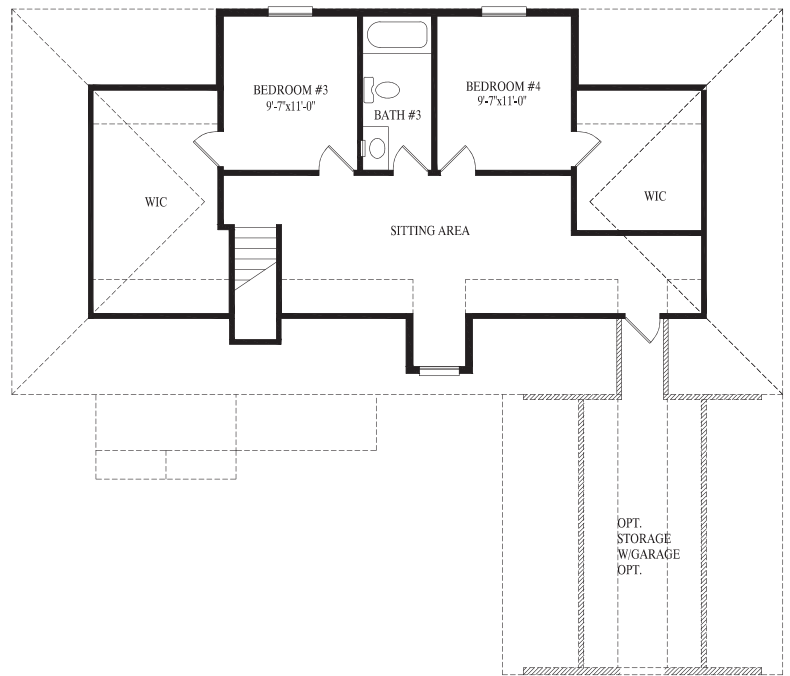
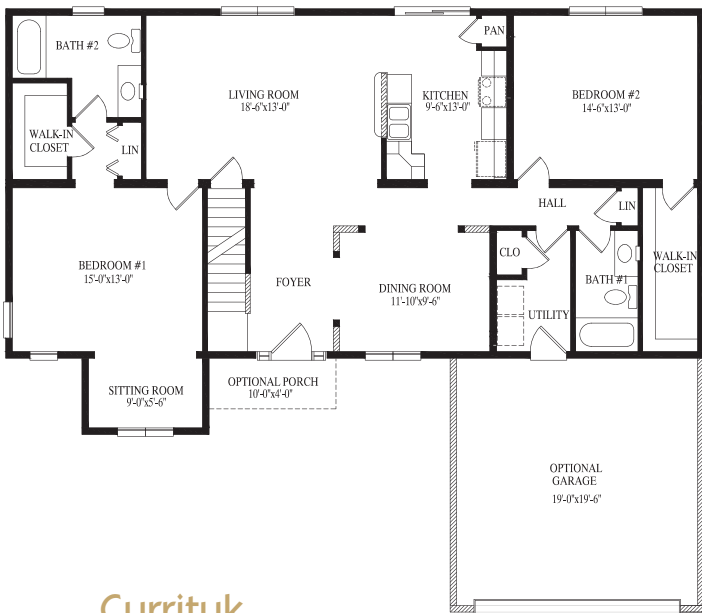


Proposed Second Floor – 1088 sq. ft.



Huntington II
27' 6" x 48' Cape
1320 sq. ft. first floor

NOTE: Above models also available in 26' 4" & 31' 6" wide



Currituk

27' 6" x 55' Cape

1573 sq. ft. first floor

1973 sq. ft. w/ garage option

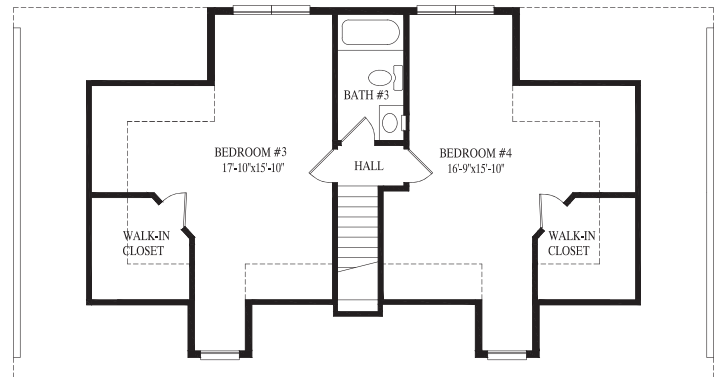
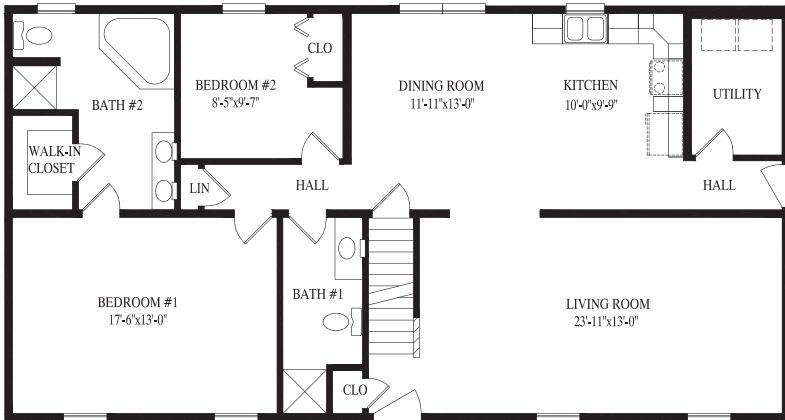
Also available in 26' 4" & 31' 6" wide

Proposed Second Floor – 900 sq. ft.
w/garage option – 1103 sq. ft.

CURRITUK

HUNTINGTON III

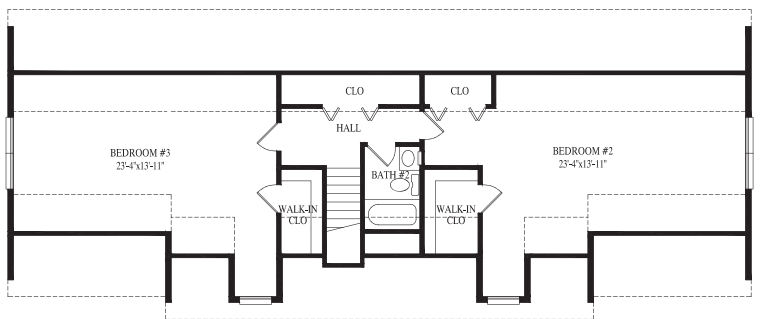
Huntington III
 27' 6" x 52' Cape
 1430 sq. ft. first floor



Proposed Second Floor – 851 sq. ft.

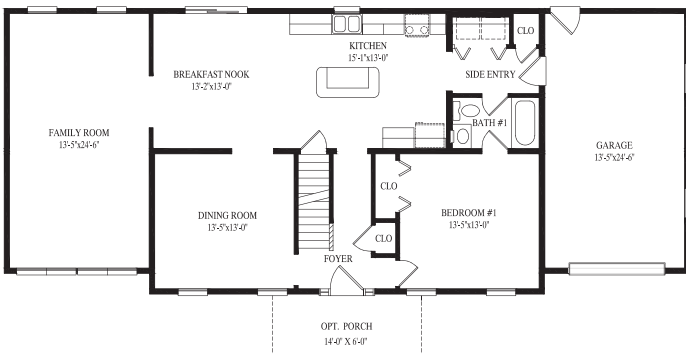


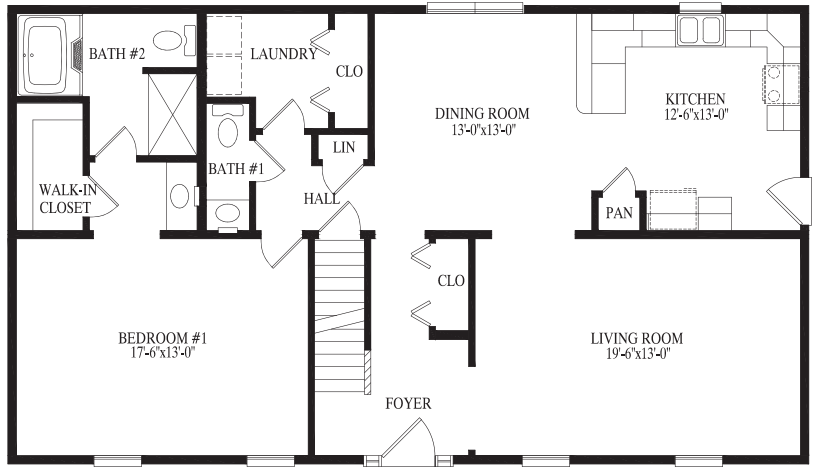
BAR HARBOR



Proposed Second Floor – 875 sq. ft.
 w/garage option – 1079 sq. ft.

Bar Harbor
 27' 6" x 52' Cape
 1402 sq. ft. first floor
 1759 sq. ft. w/ garage option
 Also available in 26' 4" & 31' 6" wide





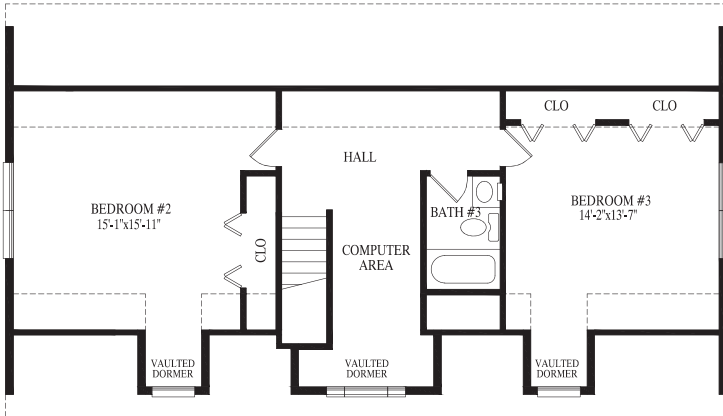
DARTMOUTH

Dartmouth

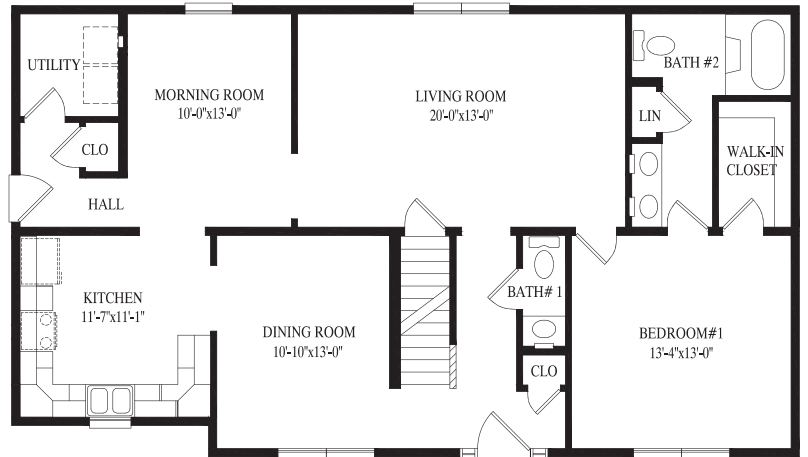
27' 6" x 48' Cape

1320 sq. ft. first floor

Also available in 26' 4" & 31' 6" wide



Proposed Second Floor – 874 sq. ft.

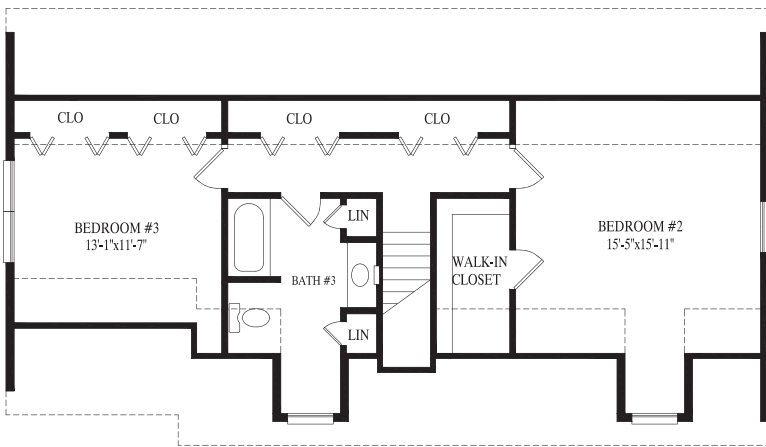


Freeport

27' 6" x 48' Cape

1297 sq. ft. first floor

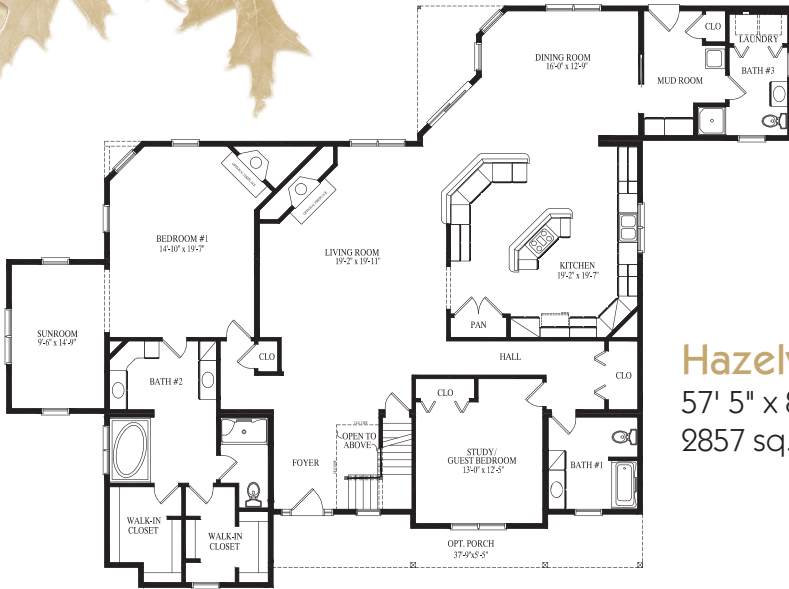
Also available in 26' 4" & 31' 6" wide



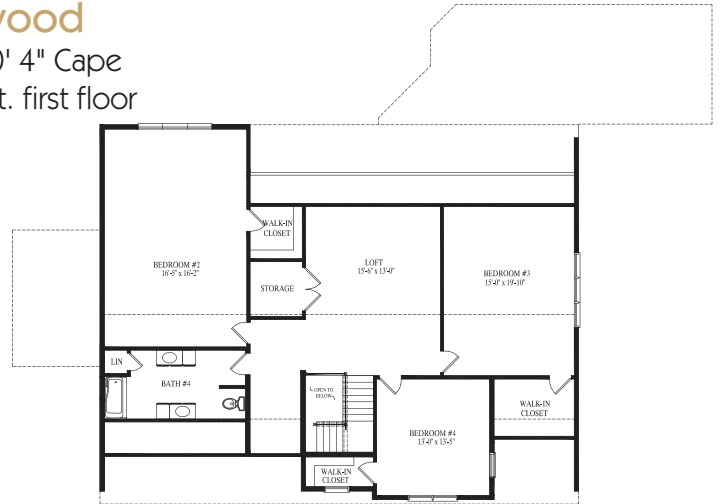
Proposed Second Floor – 814 sq. ft.

FREEPORT

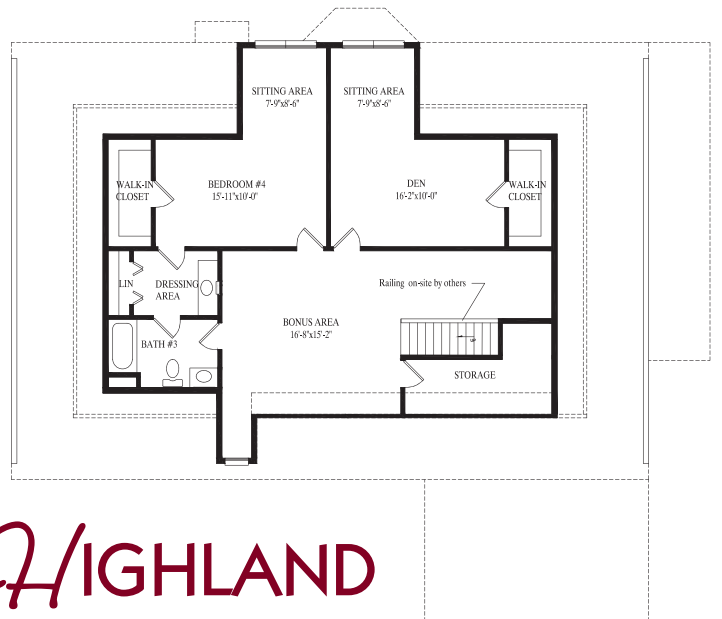
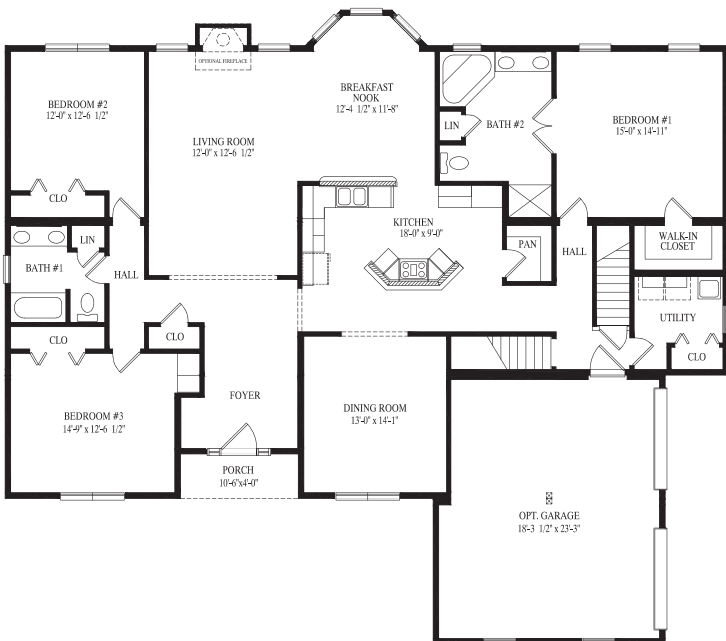
HAZELWOOD



Hazelwood
57' 5" x 80' 4" Cape
2857 sq. ft. first floor



Proposed Second Floor – 1837 sq. ft.



Proposed Second Floor – 1246 sq. ft.

HIGHLAND

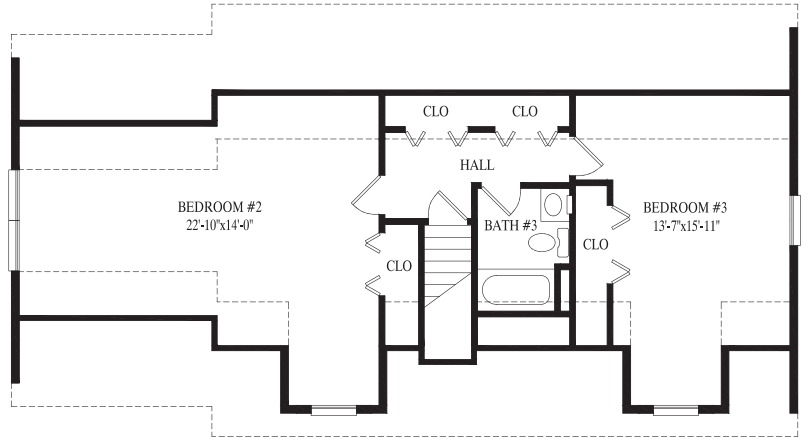
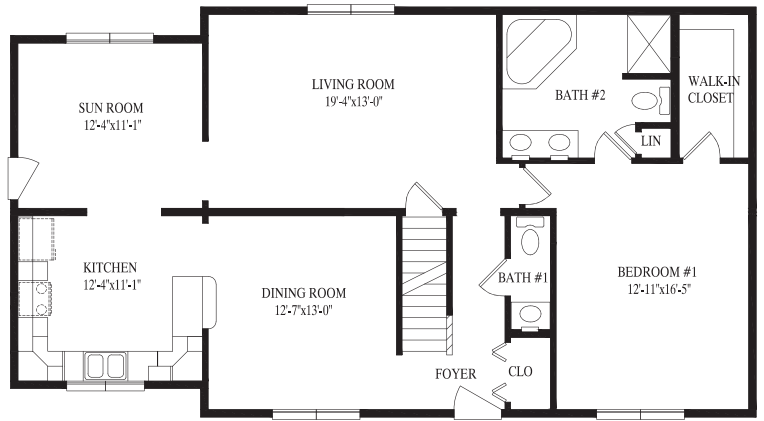
Highland
56' 11" x 65' Cape
2351 sq. ft. first floor
2837 sq. ft. w/garage option



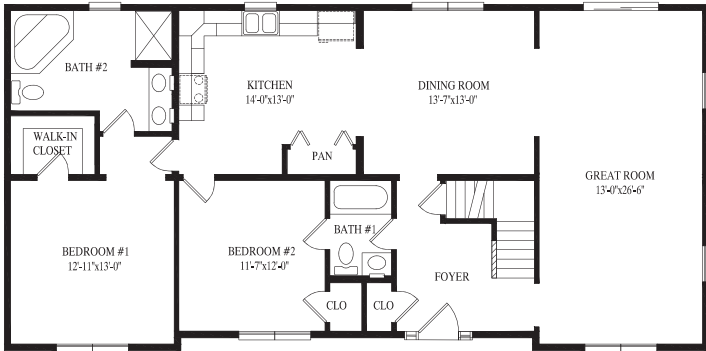
Kittery

27' 6" x 50' Cape
1326 sq. ft. first floor

KITTERY

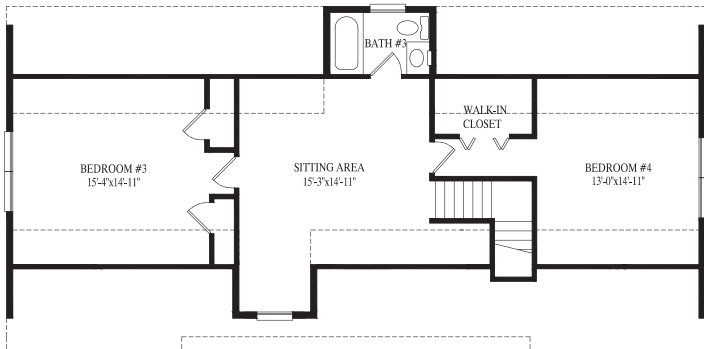


Proposed Second Floor – 836 sq. ft.



Nantucket

27' 6" x 56' Cape
1512 sq. ft. first floor



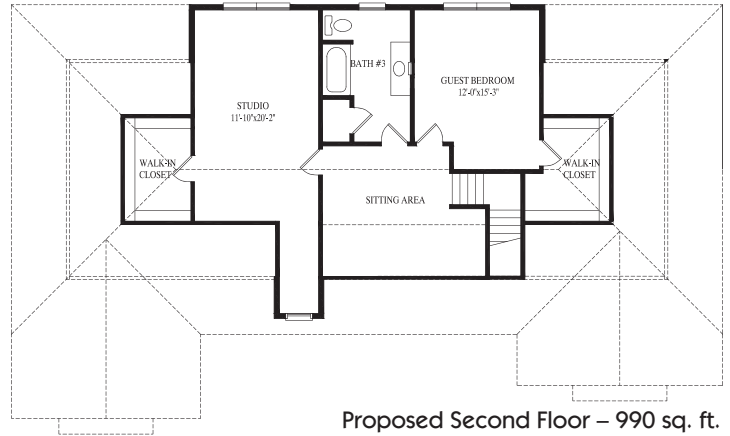
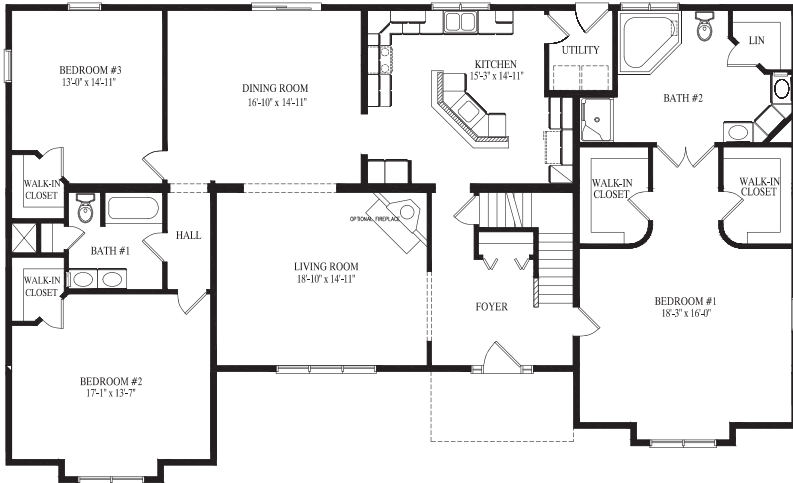
Proposed Second Floor – 952 sq. ft.



NANTUCKET

RICHMOND

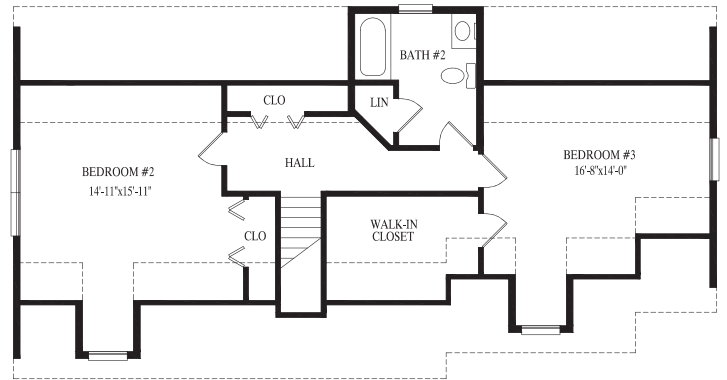
Richmond
 31' 6" x 68' Cape
 2408 sq. ft. first floor
 Also available in 26' 4" & 31' 6" wide



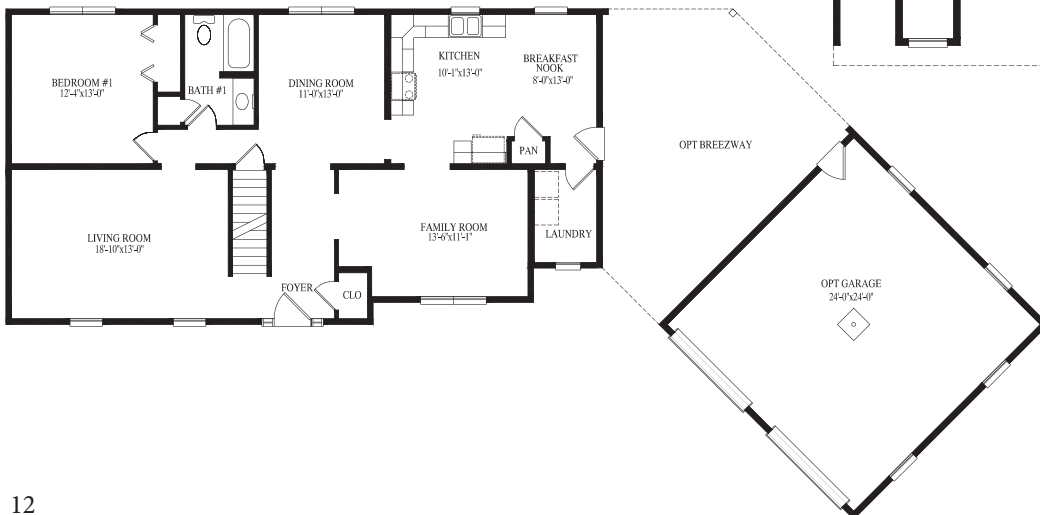
Proposed Second Floor – 990 sq. ft.



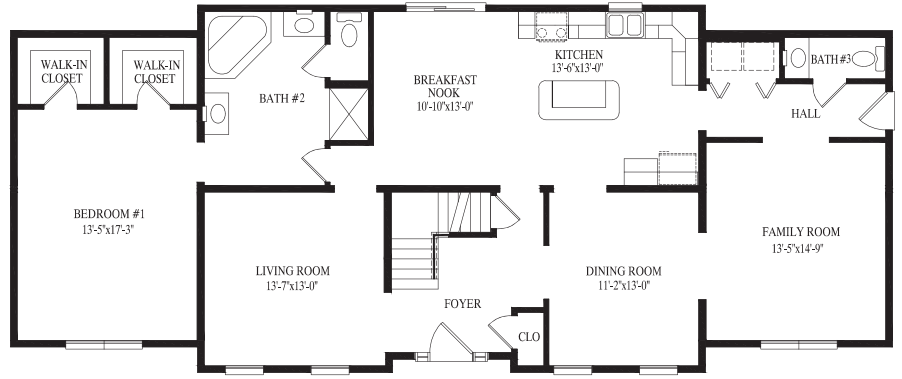
ROCKPORT



Proposed Second Floor – 903 sq. ft.



Rockport
 27' 6" x 52' Cape
 1374 sq. ft. first floor
 Also available in 26' 4" & 31' 6" wide



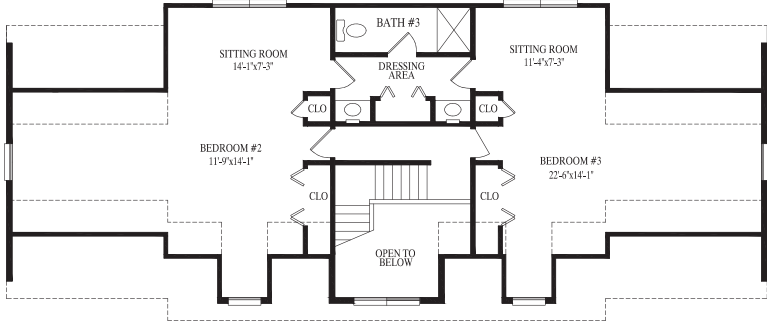
SOUTHPORT

Southport

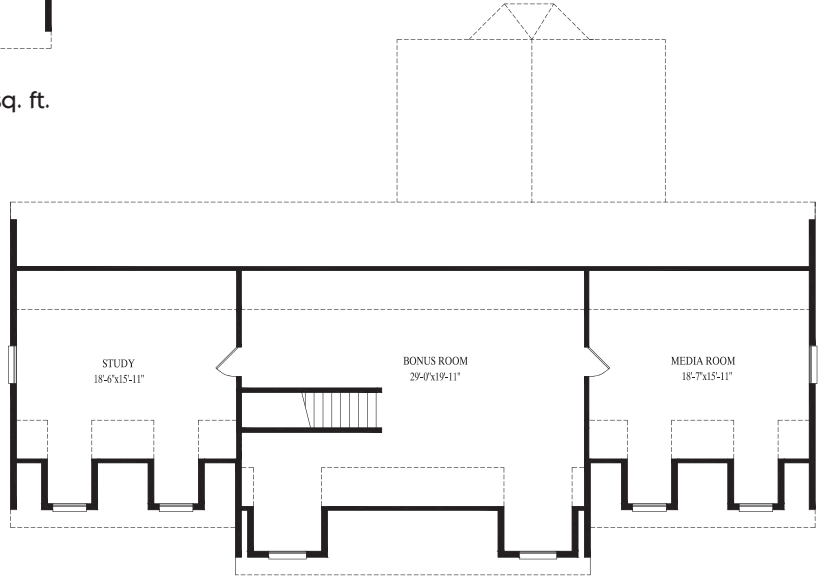
27' 6" x 66' Cape

1699 sq. ft. first floor

Also available in 26' 4" & 31' 6" wide



Proposed Second Floor – 1280 sq. ft.



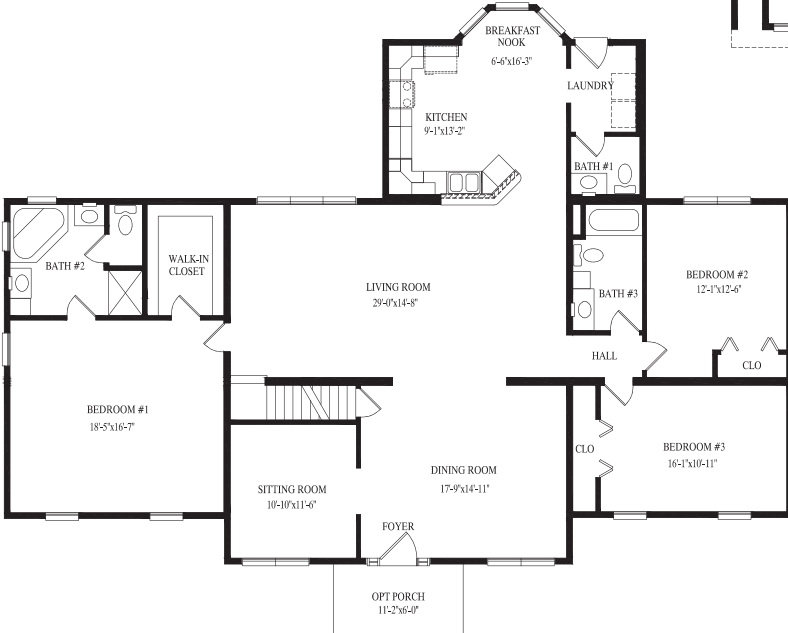
Proposed Second Floor – 1376 sq. ft.

Westport

27' 6" x 68' Cape

2326 sq. ft. first floor

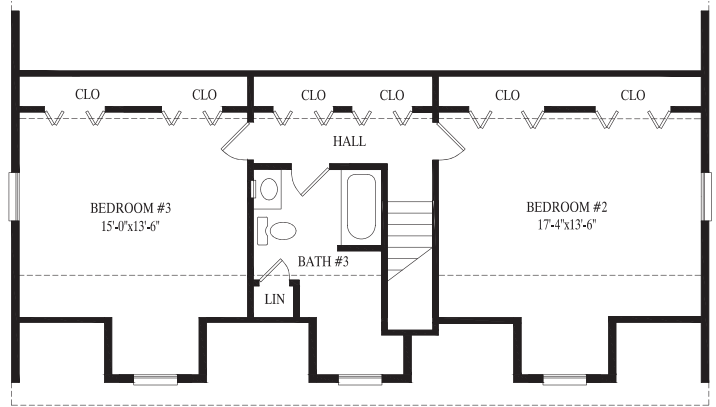
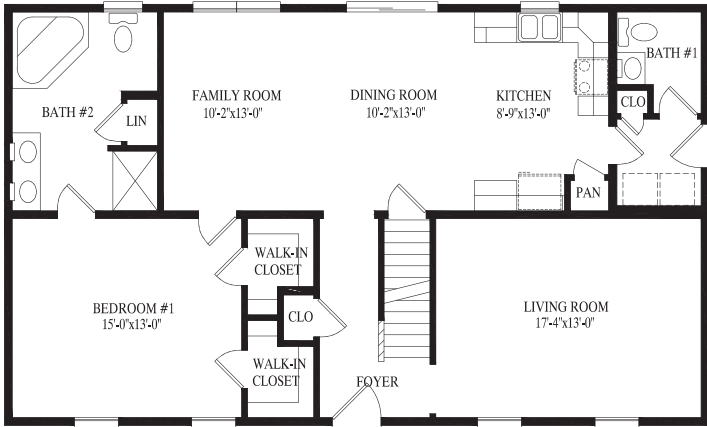
Also available in 26' 4" & 31' 6" wide



WESTPORT

HATTERAS

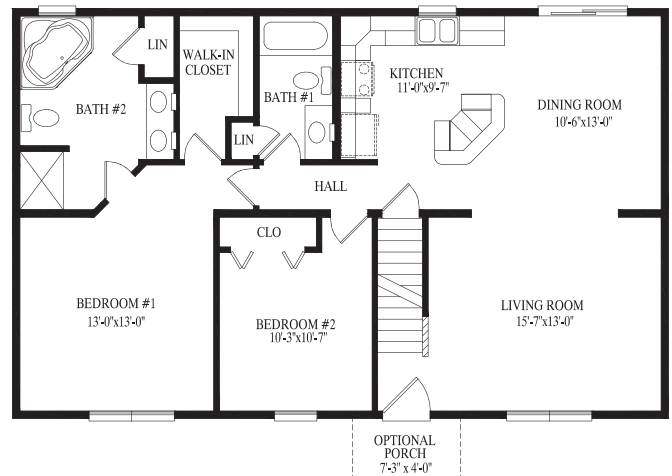
Hatteras
 27' 6" x 46' Cape
 1265 sq. ft. first floor
 Also available in 26' 4" & 31' 6" wide



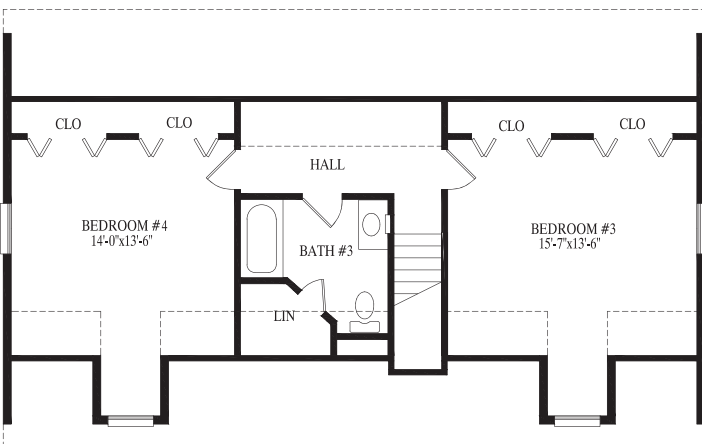
Proposed Second Floor – 845 sq. ft.



CHATHAM



Chatham
 27' 6" x 44' Cape
 1210 sq. ft. first floor
 Also available in 26' 4" & 31' 6" wide



Proposed Second Floor – 770 sq. ft.

Popular Exterior Options...



Dormers



Barrel Porch



Double Reverse Gable with Porch Extension



Bump Out or Window Seat with Shed Style Roof



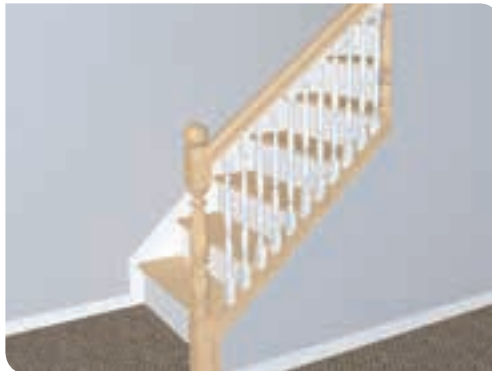
Full Length Decorative Shingle Return



Reverse Gable Porch Extension



Wrap Around Porch with Single Module Extension



36" High Sloped Railing



36" High Sloped Wall

Great Homes Start With Quality Products...





Professional Building Systems, Inc.

200 Custom Avenue
Middleburg, PA 17842
Phone (800) 837-4552
info@pbsmodular.com
www.pbsmodular.com

*Professional Building Systems Inc. is a division of
Modular Building Systems of PA*
www.modularbuildingsystemsofpa.com

Your PBS Builder/Developer

Builders/Developers are not agents of Professional Building Systems.

NOTE: All renderings are artist's concepts only and may vary from the actual home.