



Designer RANCH

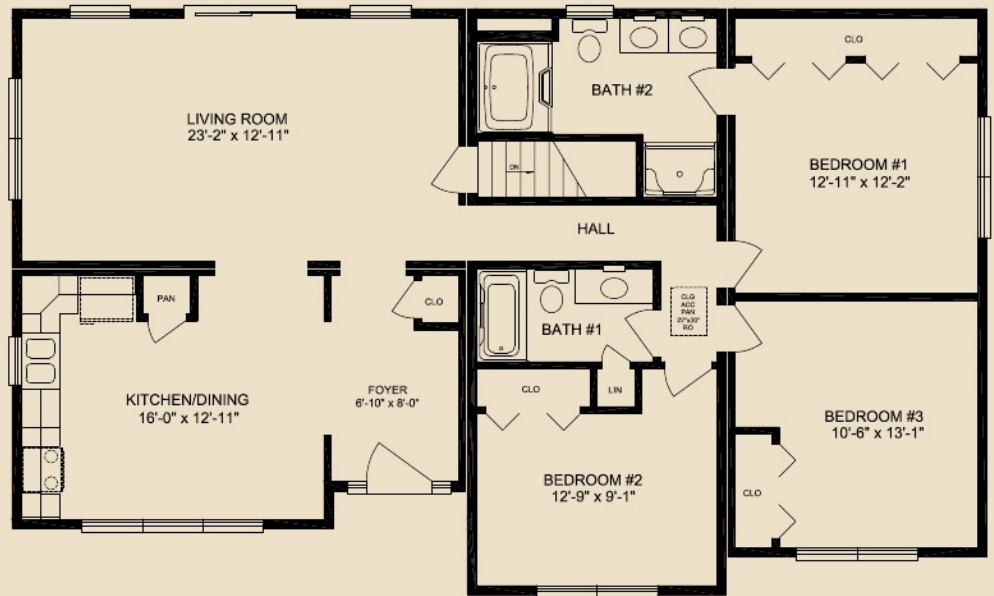
7172 Route 522N | Middleburg, PA 17842
570.837.2333 | 1.800.326.9524 | fax 570.837.2346 | www.apexhomesinc.com

the RANCH

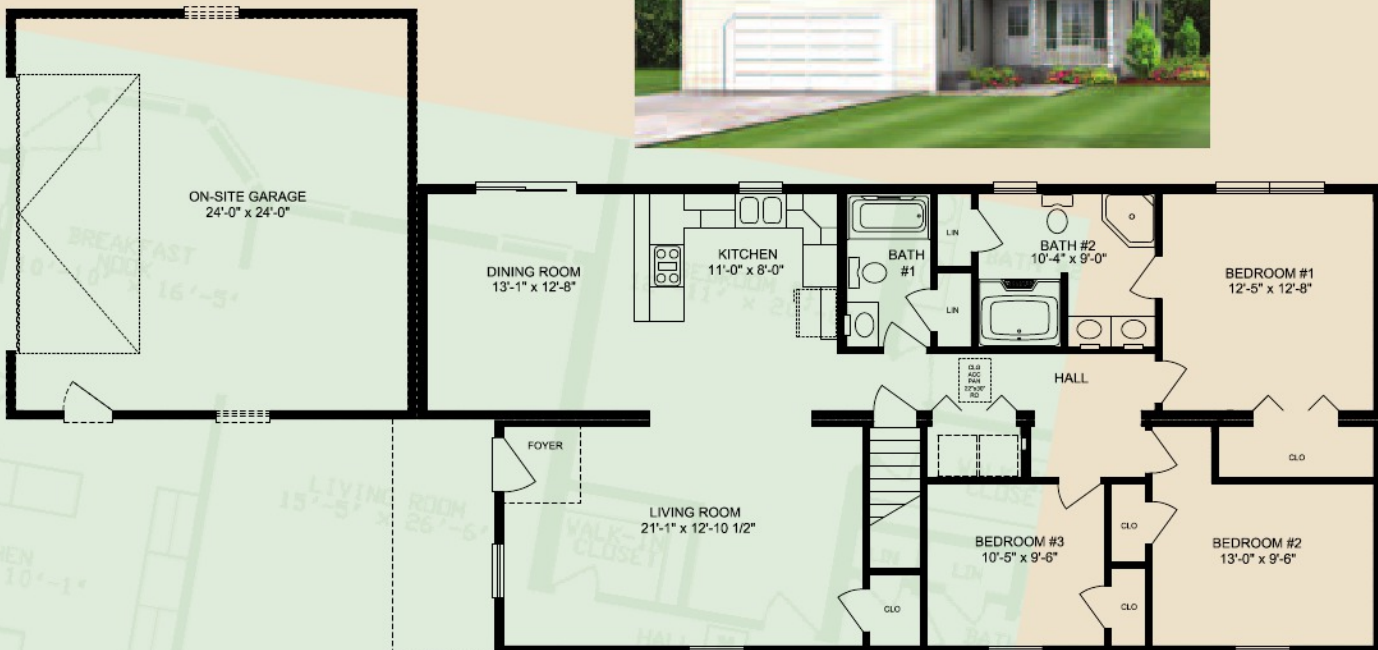
The ranch home is one of the most popular and practical styles in housing today. The ranch offers the convenience of all living space on the same level and can be adapted to both a crawl space or full foundation. The exterior of this home can be smartly dressed with the addition of offsets, porch roofs, decorative dormers and/or door and window packages.



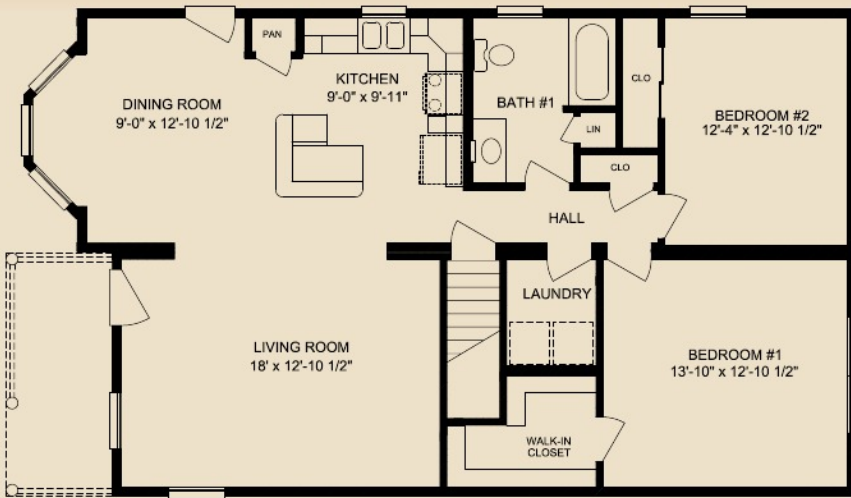
ELM | 1,485 Sq. Ft.



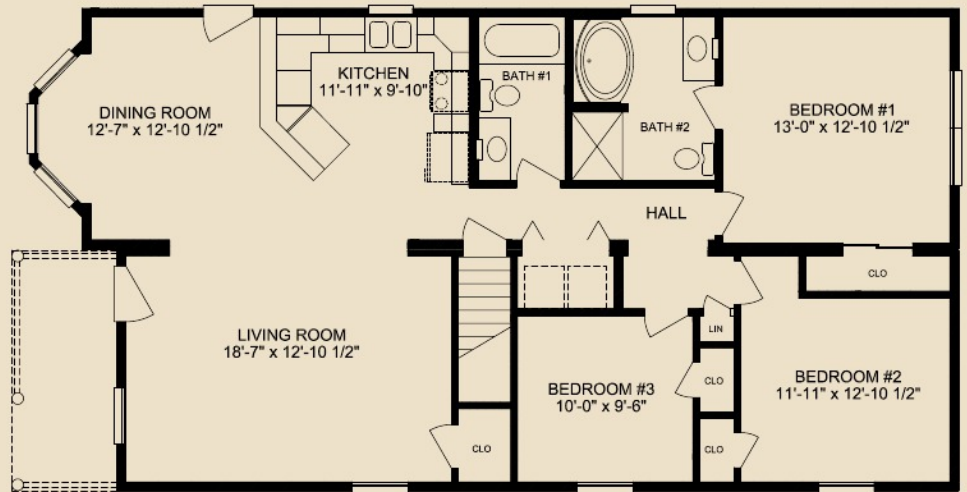
SPRUCE | 1,491 Sq. Ft. without garage
2,059 Sq. Ft. with garage



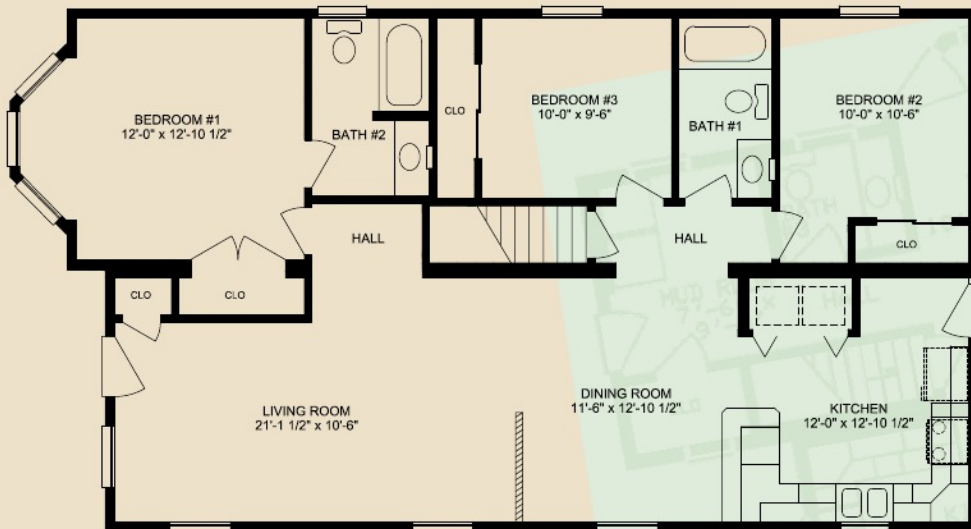
LAUREL BAY I | 1,213 Sq. Ft.



LAUREL BAY II | 1,378 Sq. Ft.

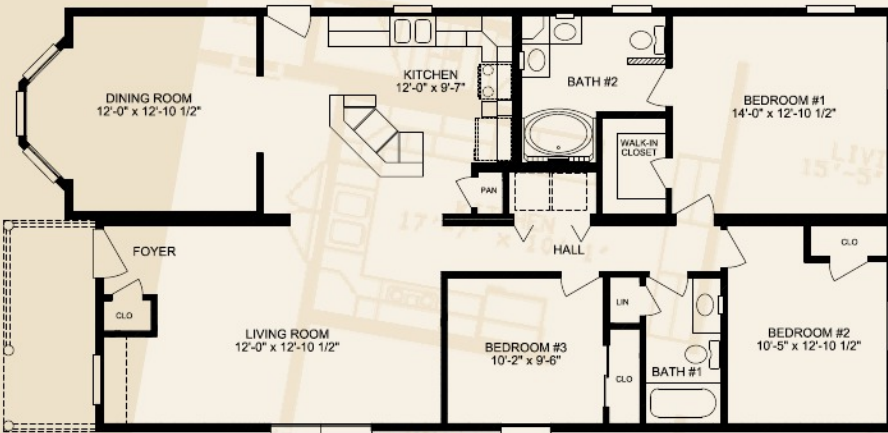


LAUREL BAY III | 1,323 Sq. Ft.

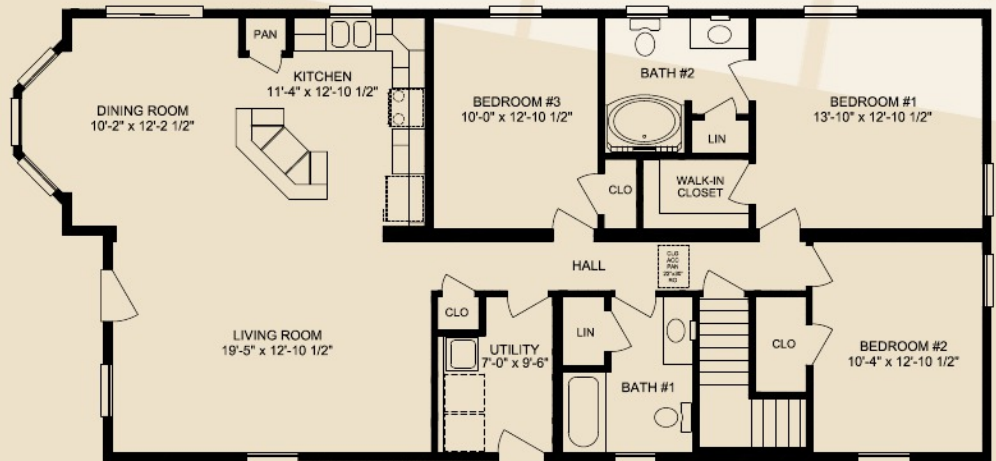


the peak of perfection

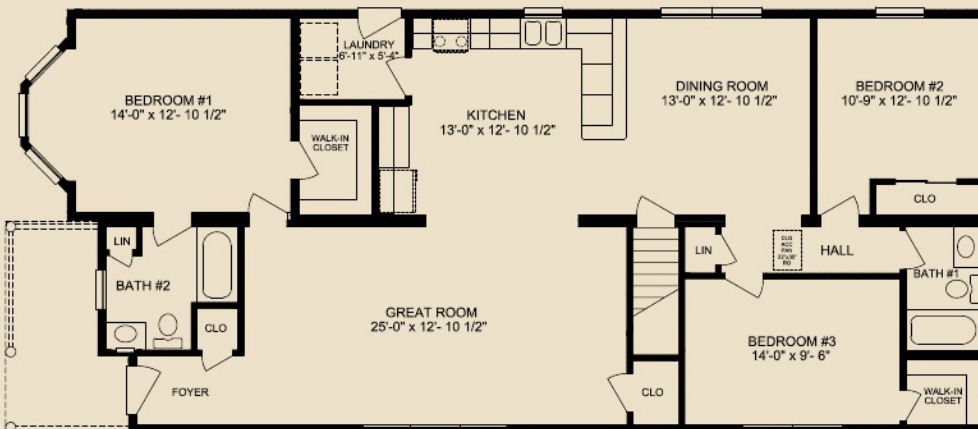
LAUREL BAY IV | 1,488 Sq. Ft.



LAUREL BAY V | 1,543 Sq. Ft.



LAUREL BAY VI | 1,653 Sq. Ft.

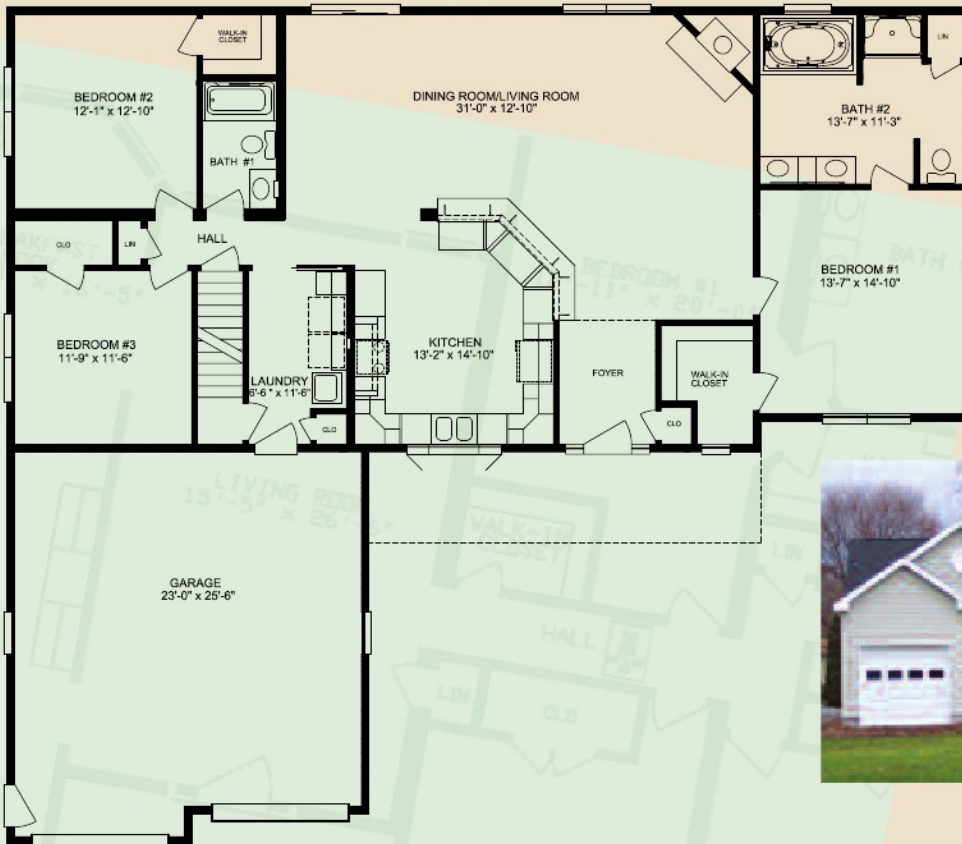


the peak of perfection

ASHWOOD | 1,750 Sq. Ft.

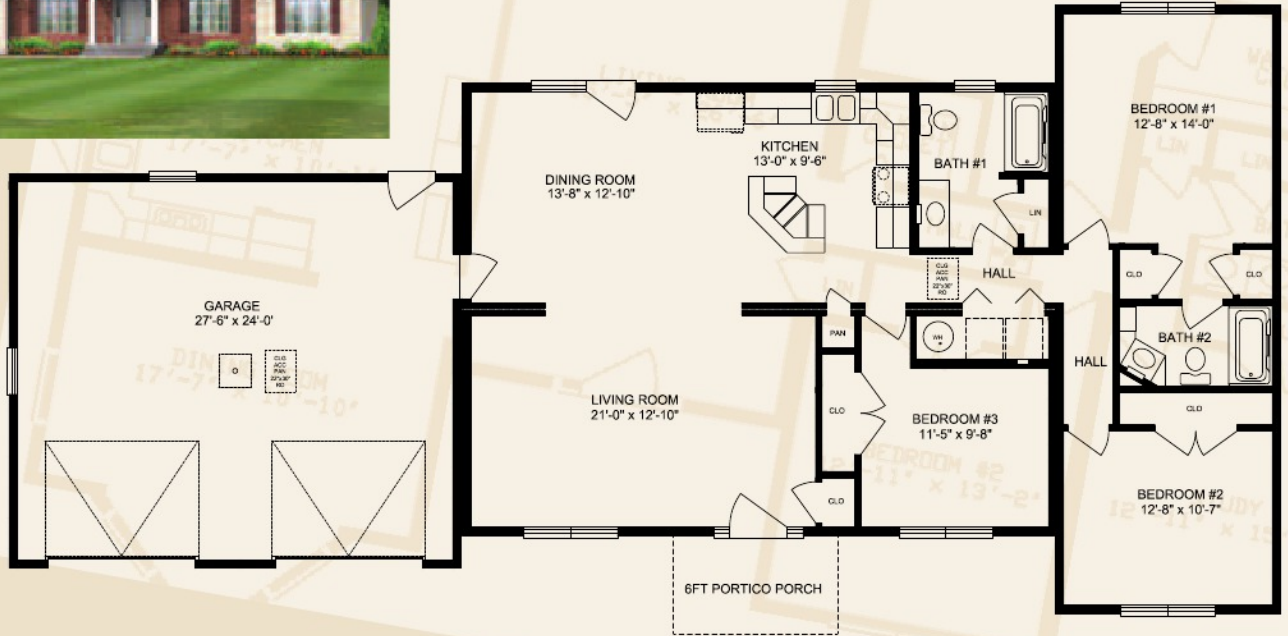


CHESTNUT | 1,860 Sq. Ft. without garage 2,452 Sq. Ft. with garage

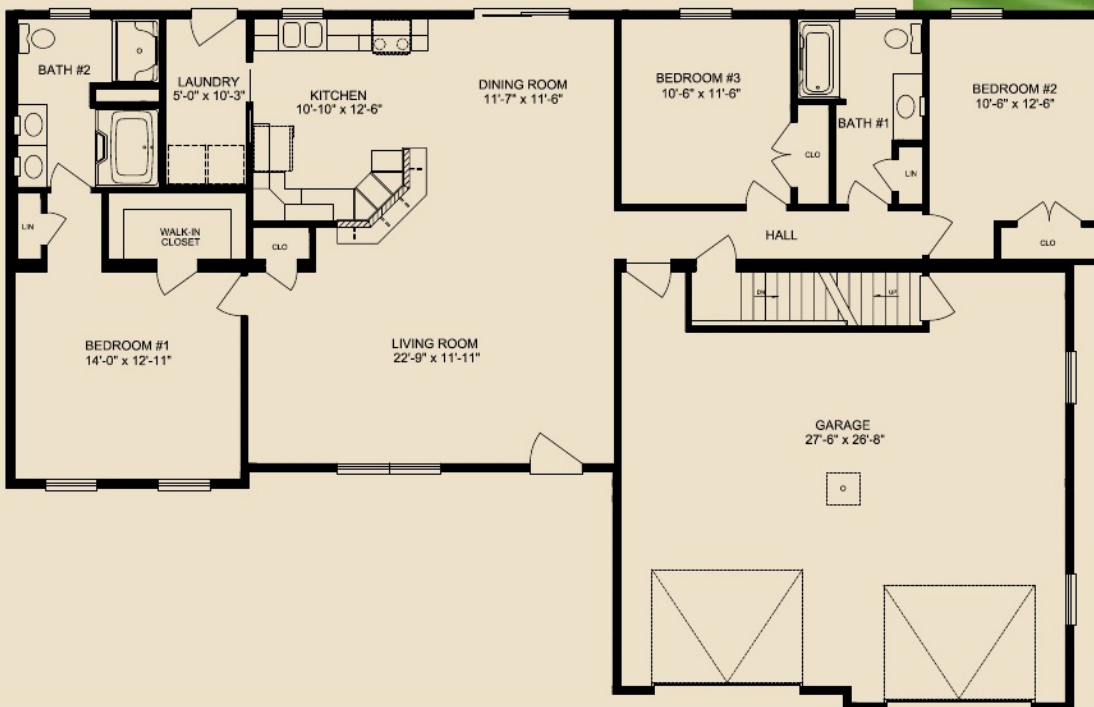




REDWOOD | 1,498 Sq. Ft. without garage
2,158 Sq. Ft. with garage



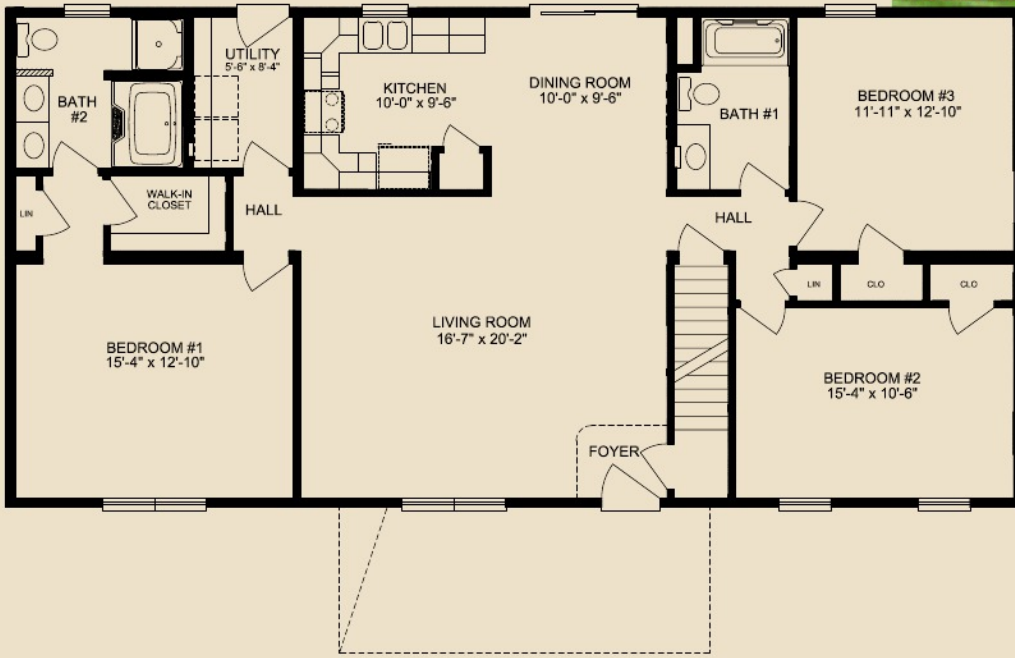
DOGWOOD | 1,530 Sq. Ft. without garage
2,370 Sq. Ft. with garage



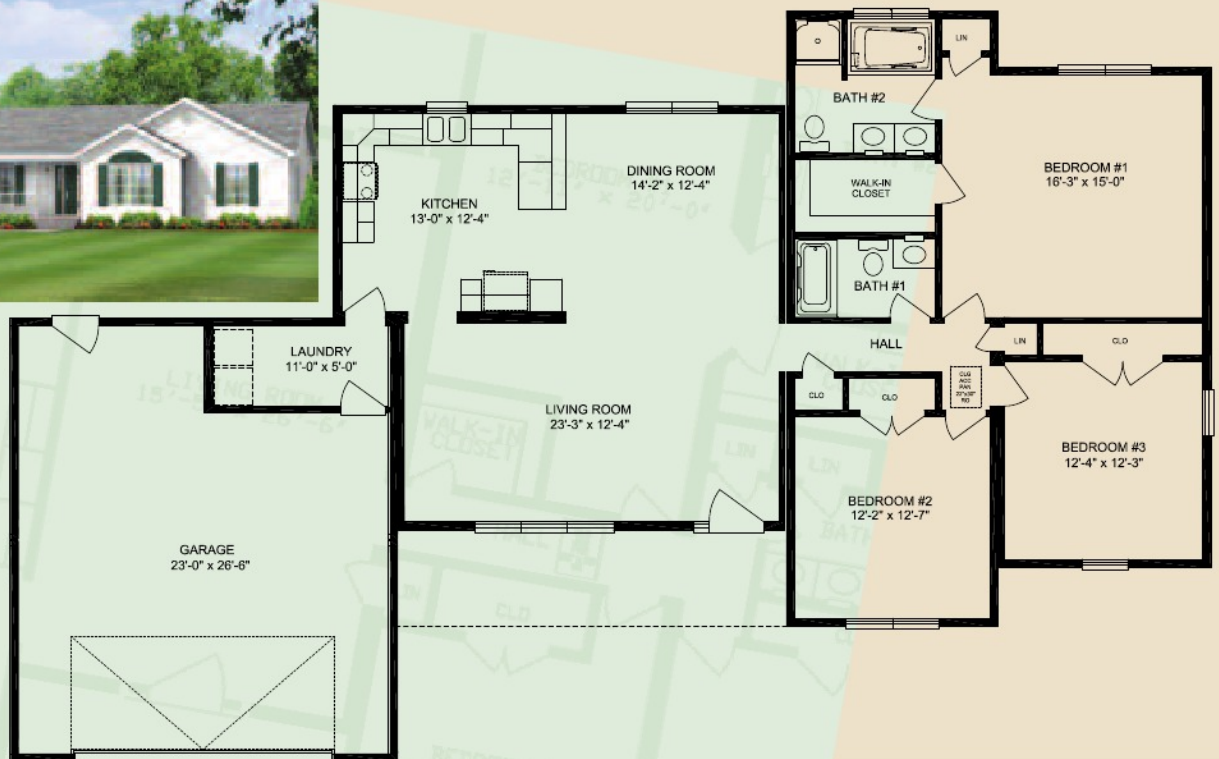
the peak of perfection



MEADOWVIEW | 1,540 Sq. Ft.



ROSEWOOD | 1,595 Sq. Ft. without garage
2,255 Sq. Ft. with garage



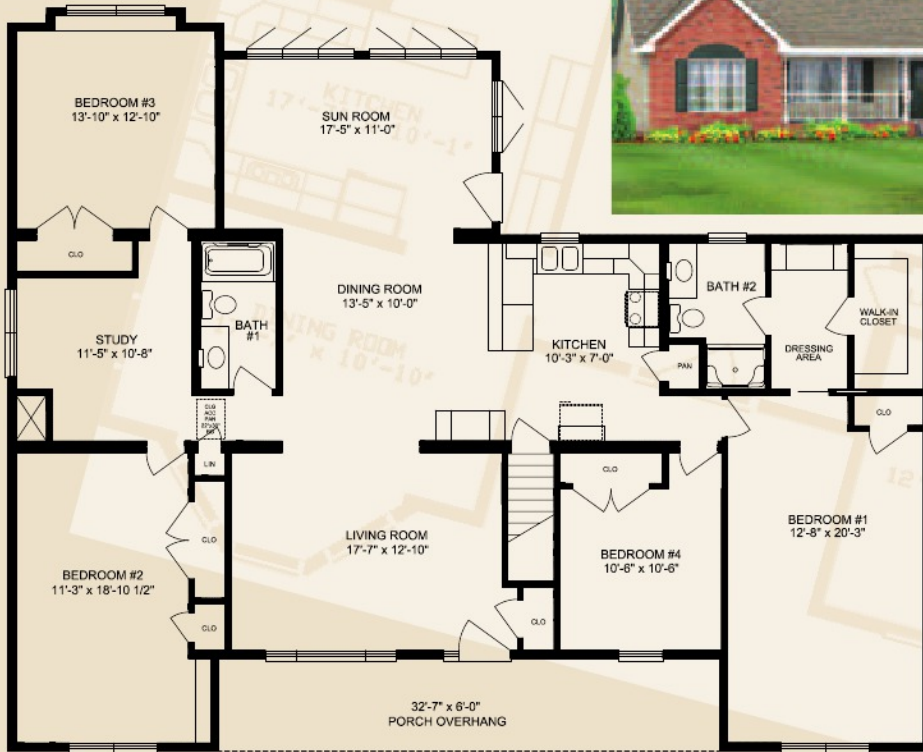
MIMOSA | 1,662 Sq. Ft.



COTTONWOOD | 1,745 Sq. Ft. without garage
2,313 Sq. Ft. with garage

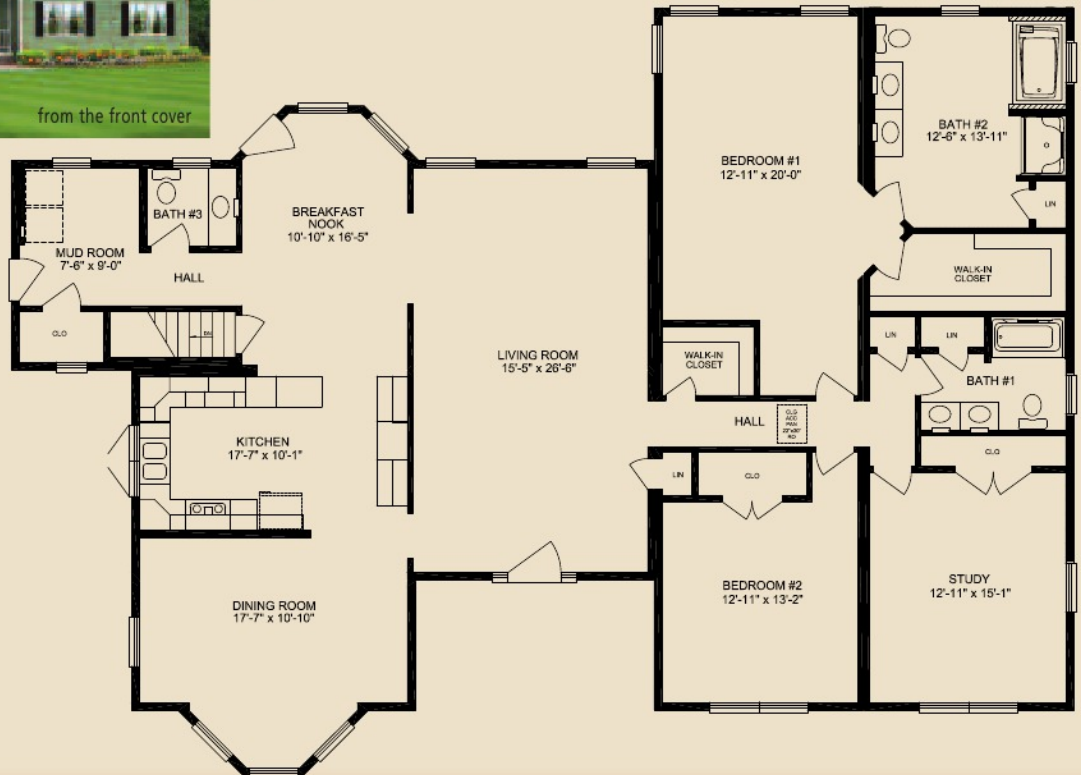


HEMLOCK | 2,264 Sq. Ft.



from the front cover

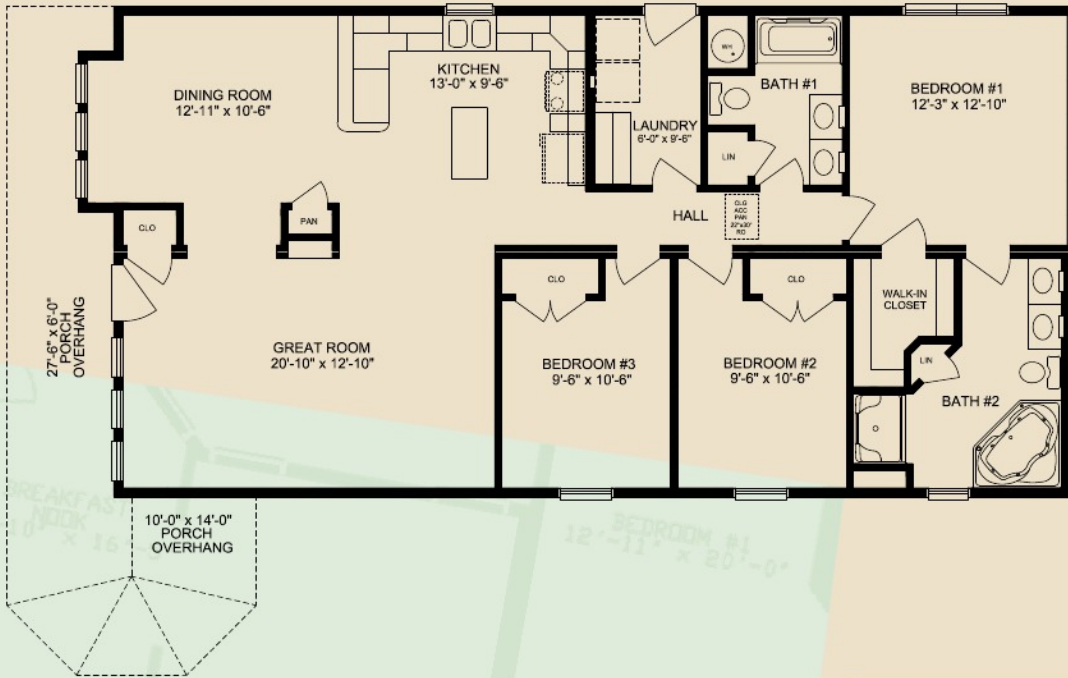
BEECHWOOD | 2,600 Sq. Ft.



the peak of perfection



 **LOCUST** | 1,503 Sq. Ft.



Your Authorized Builder:



7172 Route 522 N
Middleburg, PA 17842
570.837.2333
1.800.326.9524
fax 570.837.2346
website www.apexhomesinc.com

Note: Artist renderings may show options not included in the standard specifications.