



APEX
HOMES



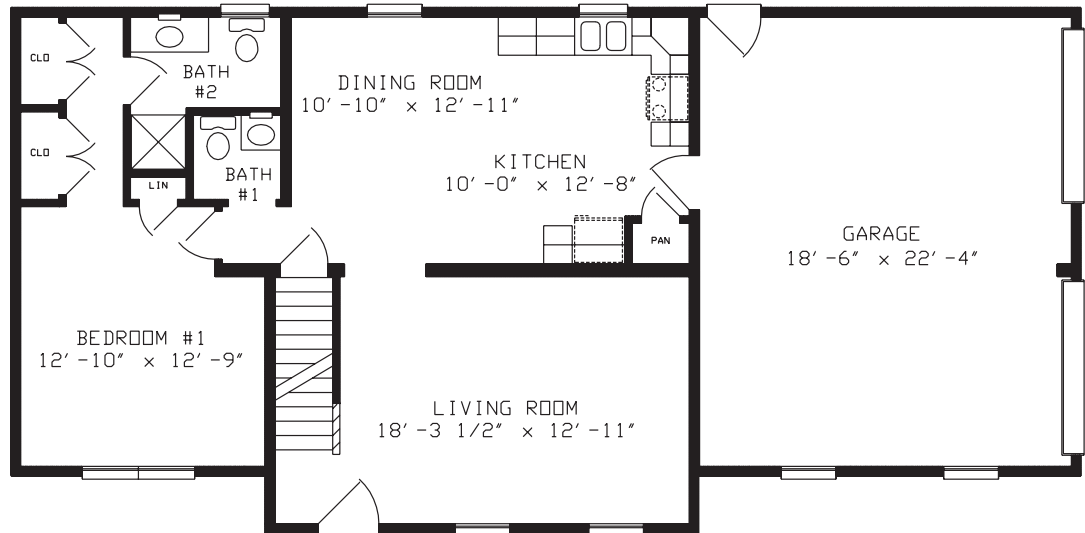
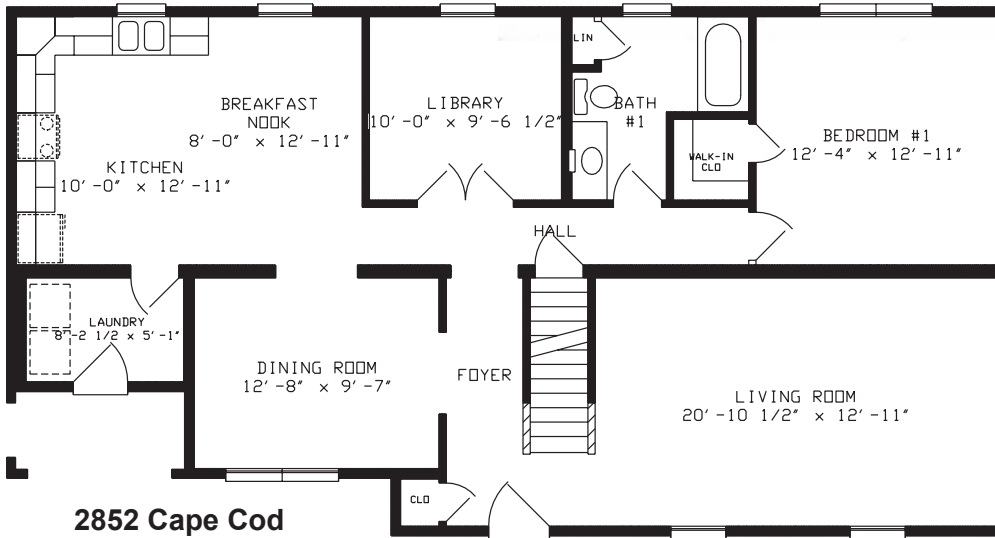
Artist renderings may include additional feature upgrades.

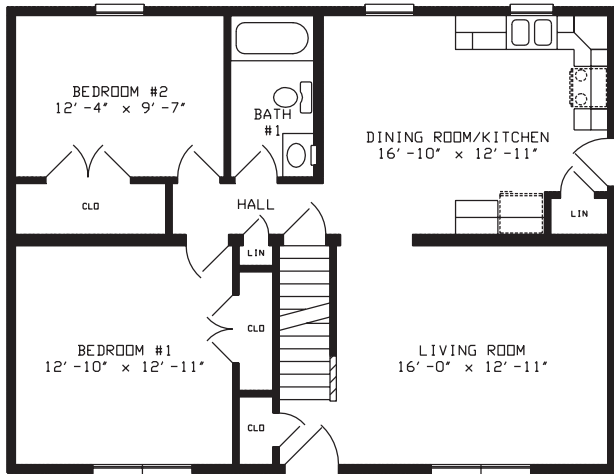
Classic Series — CAPE

7172 Route 522N | Middleburg, Pa 17842
570.837.2333 | 1.800.326.9524 | fax 570.837.2346 | www.apexhomesofpa.com

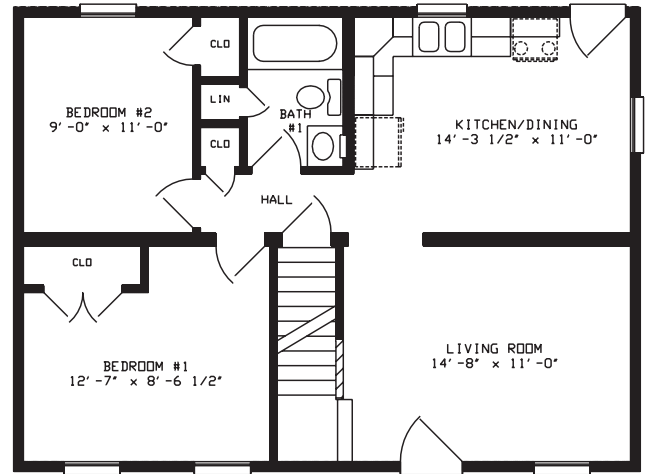
The Cape

The traditional Cape will always be popular with its charming aesthetics and practical design. This home style allows the home owner the option of completing the top story for additional living space. Dressed with window dormers, this home is sure to be a crowd pleaser.

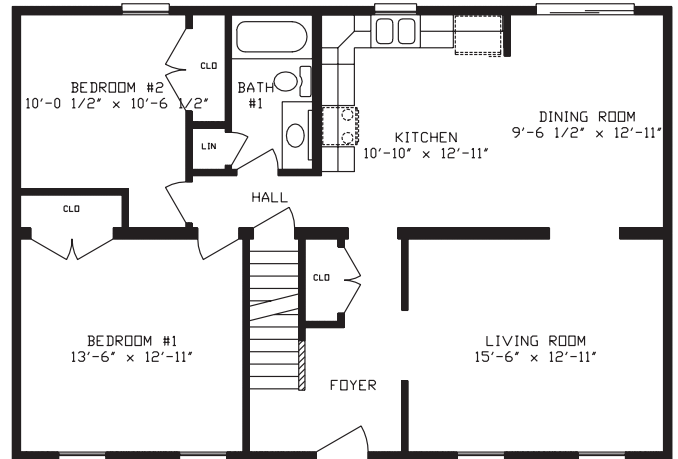




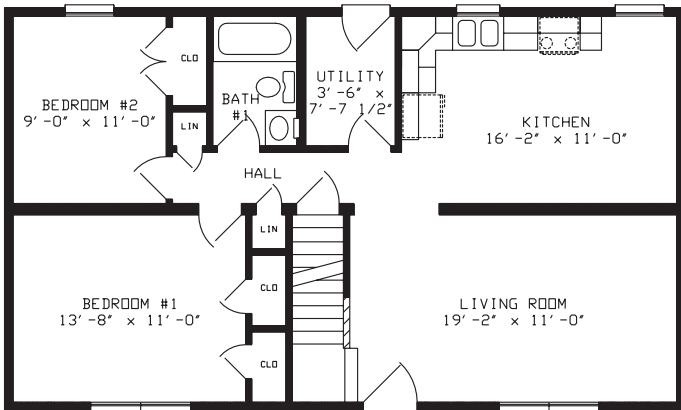
2836 Cape Charles
990 Sq. Ft.



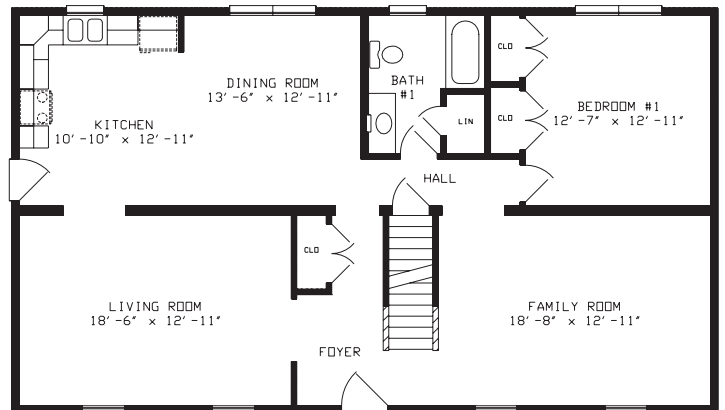
2432 Cape Hope
758 Sq. Ft.



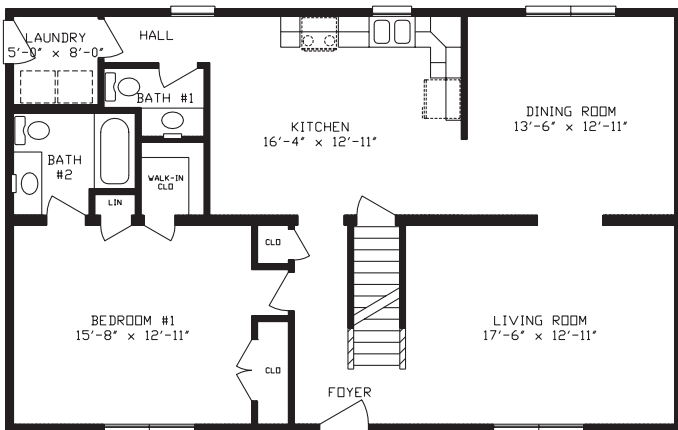
2840 Cape Rose
1100 Sq. Ft.



2440 Cape View
947 Sq. Ft.



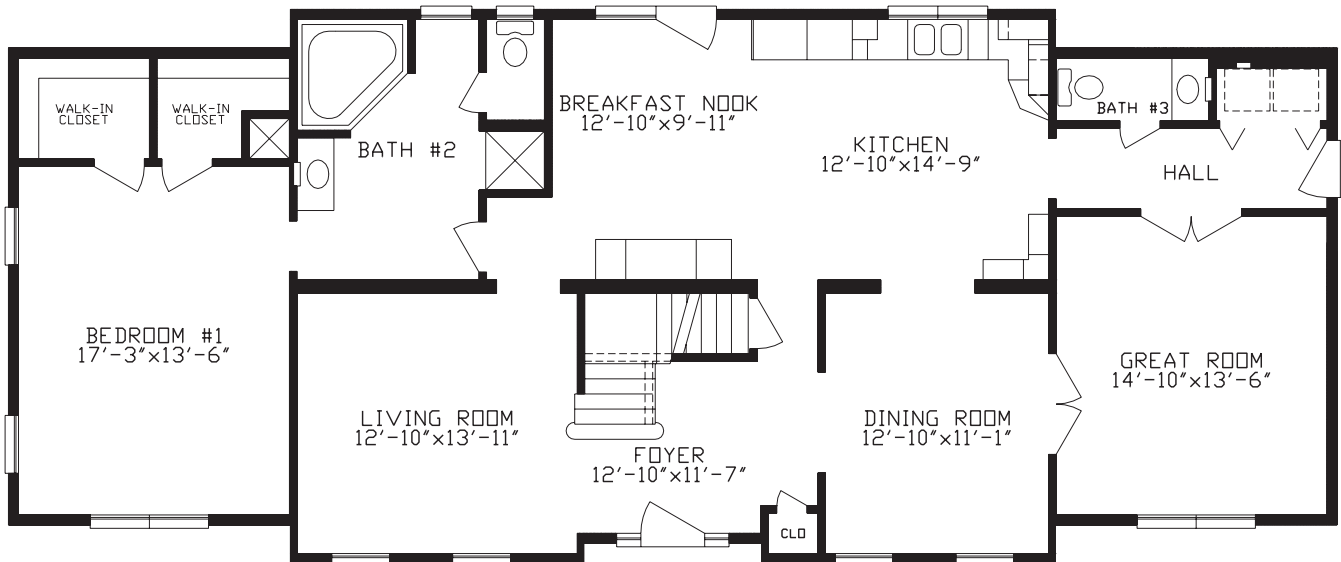
2848 Cape Marie
1320 Sq. Ft.



2844 Cape Victoria
1210 Sq. Ft.



This home is distinctively Southern Country in style. Massive columns frame this magnificent entrance. The arched windows, window grids and dormers add even more interest to this home. This has all the charm of the South.

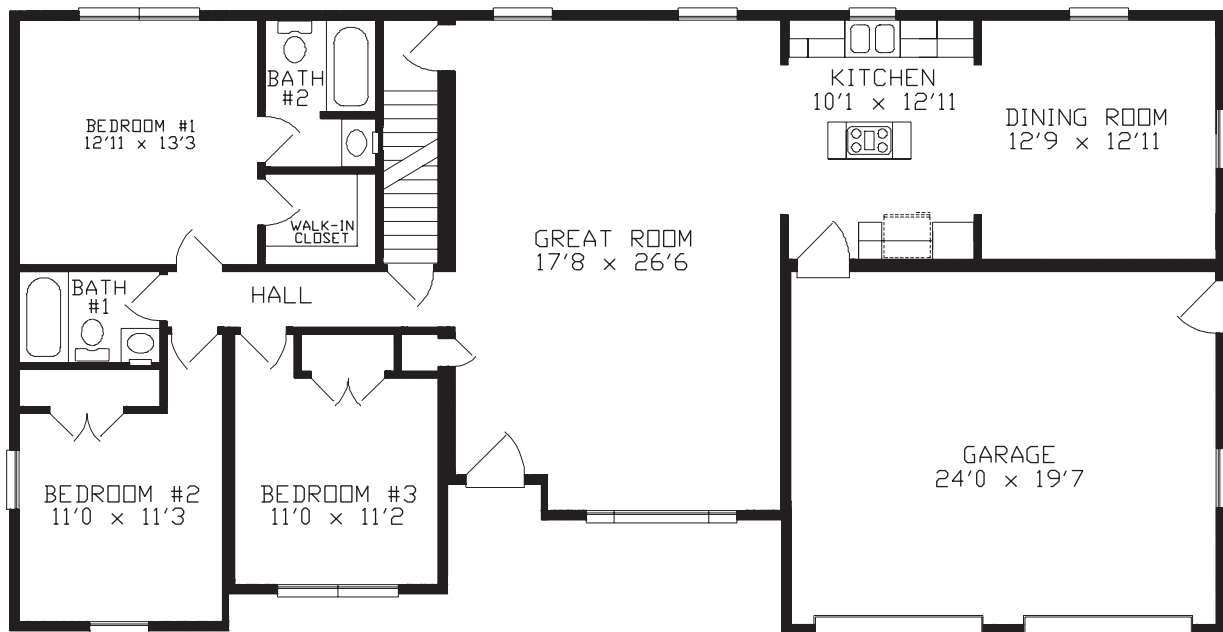


Cape Romain
1815 Sq. Ft.





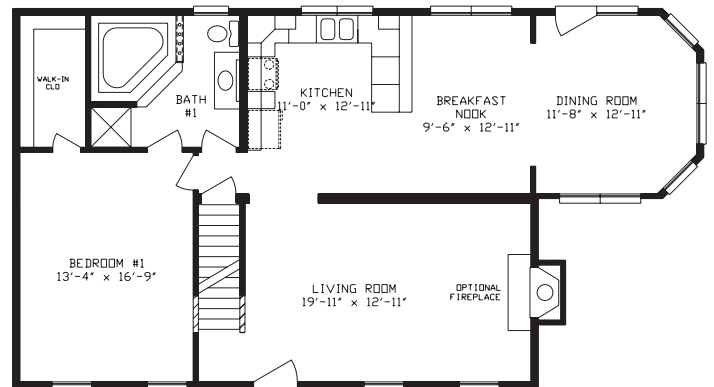
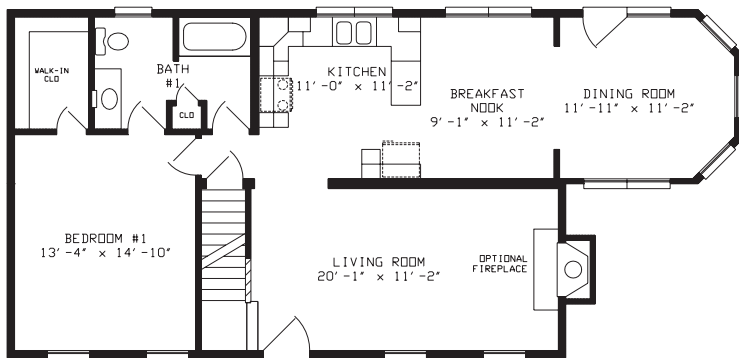
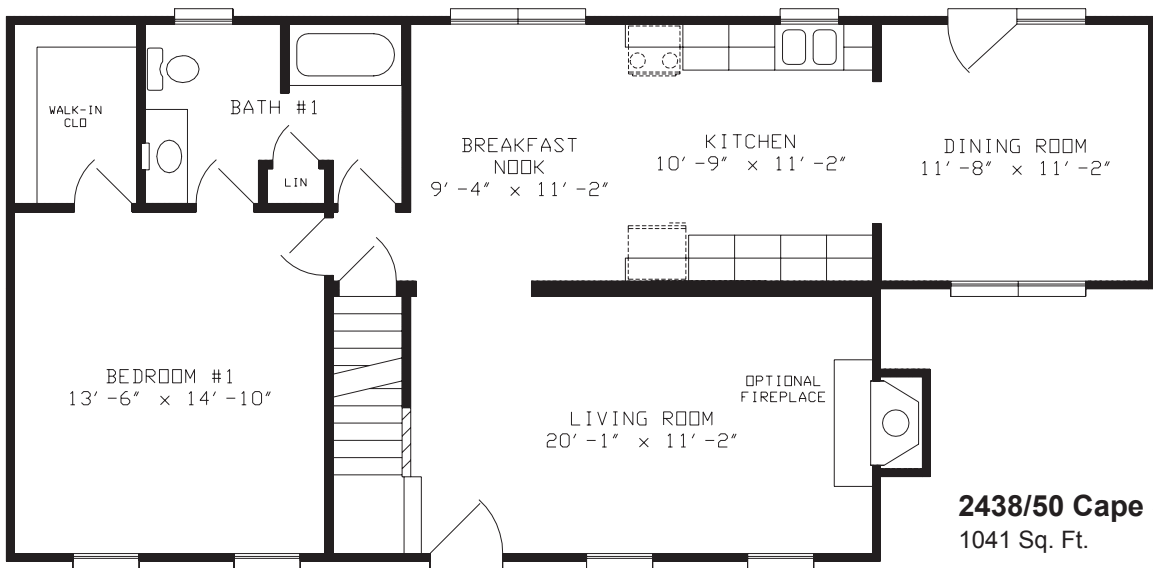
Extraordinary attention has been focused on the special details of this impressive home. A hip roof and gable accents give this home a look that will stay in style for decades. The huge central great room makes a wonderful interior focal point for today's living style.



Leesburg
2083 Sq. Ft.

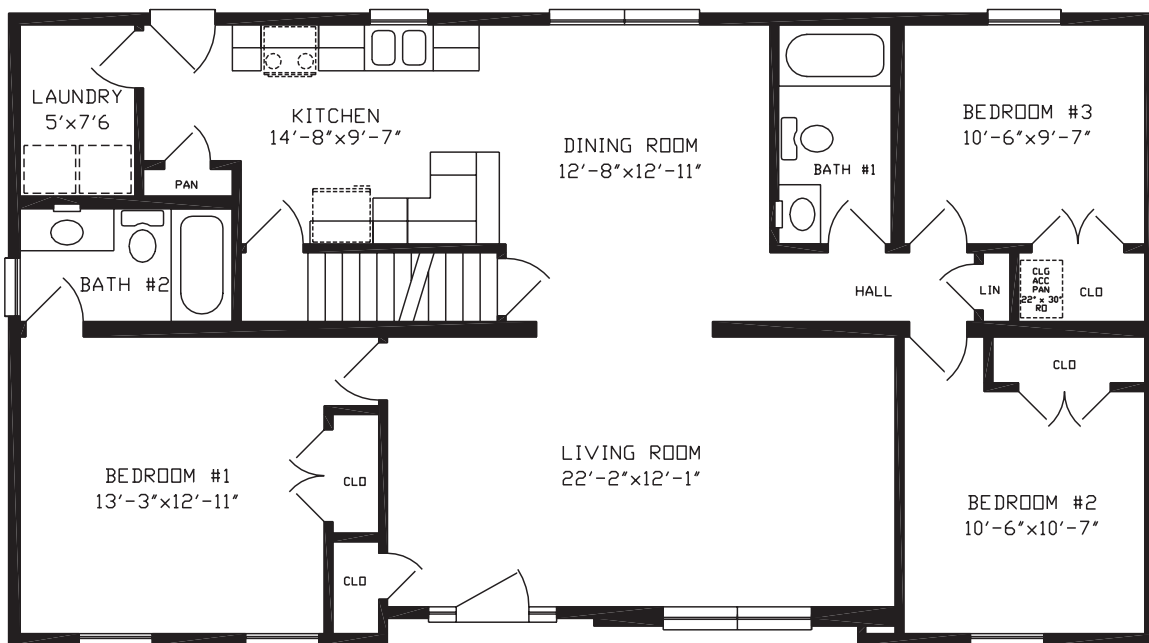


This charming country cape has a very livable floor plan. Dressed with dormers, a sunny breakfast room and a lovely large front porch, this home invites you to truly enjoy country living, wherever you build.





A truly unique style cape with its interesting roof lines and special details. This home has a wonderful floor plan with three bedrooms and a bonus area on the second floor that can be finished when your family is ready.



2850 Fredericksburg
1375 Sq. Ft.





APEX

HOMES

www.apexhomesofpa.com

7172 Route 522N | Middleburg, Pa 17842
570.837.2333 | 1.800.326.9524 | fax 570.837.2346